

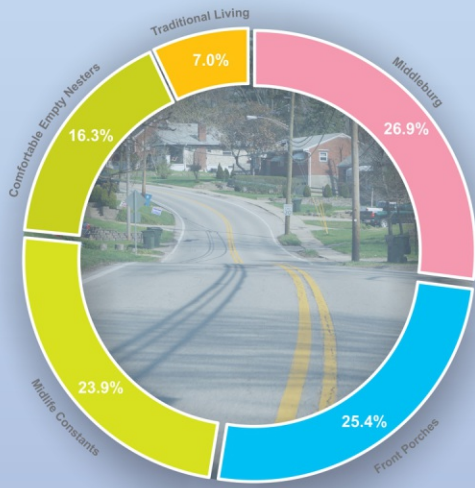
Erlanger | Stevenson Road

Demographics

Study Area Demographics and Characteristics

(Three-mile buffer of Stevenson Road)

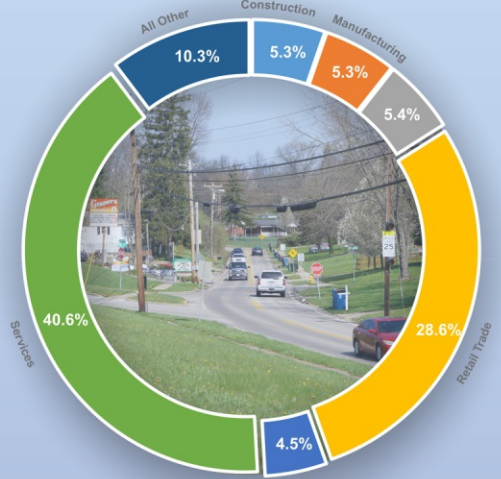
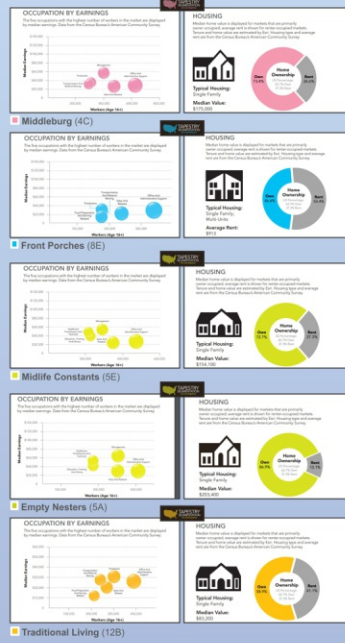
Businesses



Demographic Summary

- 11,357 people reside in the area.
- Population projected to grow by 0.41% annually through 2022.
- Median household income is \$55,800.
- Average household income is \$76,200.

(Source: Esri Business Analyst Online, April 2018)



Business Summary

- Estimated daily traffic count is 7,800-9,000.
- Businesses employ 3,416 people.
- There is no developable land along Stevenson Road.
- 3x more residents than workers (3.3:1 ratio).

(Source: Esri Business Analyst Online, April 2018)



Transportation Challenges

- OKI reports average daily traffic count of 5,000-14,999.
- Stevenson Road has a high Critical Crash Rate Factor (CRF).
- Stevenson Road has a CRF of 2.5 where 1.0 is average.

Average CRF for any given Urban Collector in Kentucky is 1.0

CRF is a good indicator of safety because it normalizes data with data from similar roads and provides a statistical basis for analysis.



Flooding Impacts

- Flooding near Stevenson Road Greenhouse is typically extreme.
- This is the low elevation point of this area.
- During heavy rain water gushes out of manhole covers.
- Several times a year the road is impassible and business operations close.

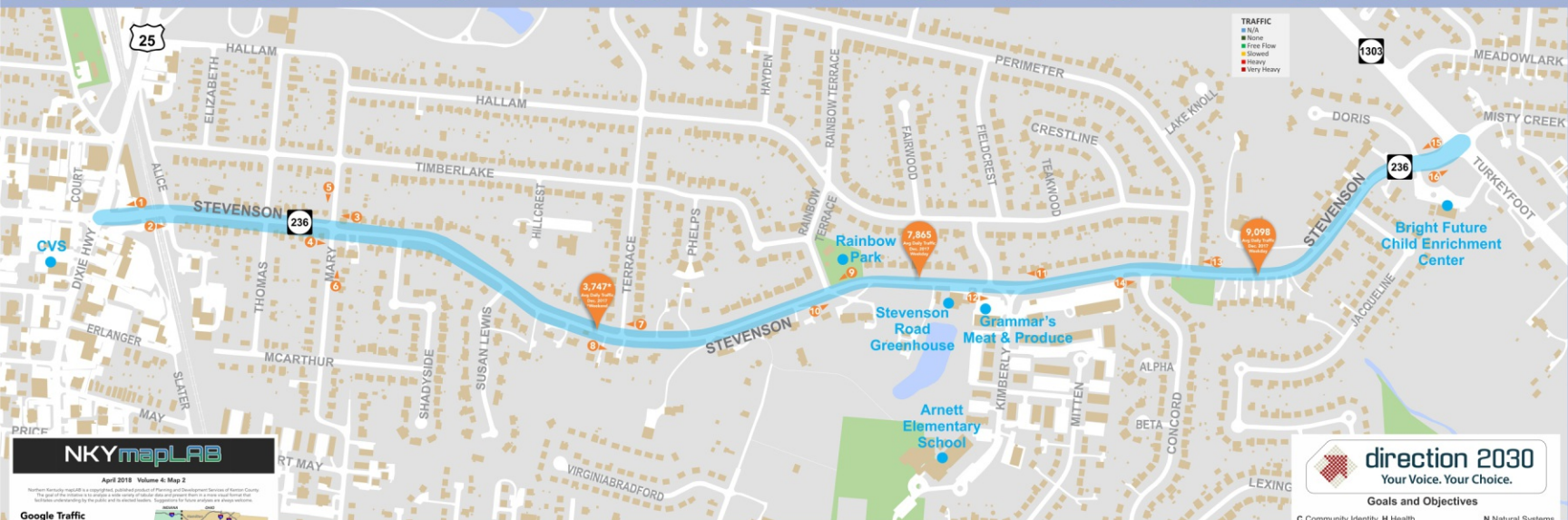
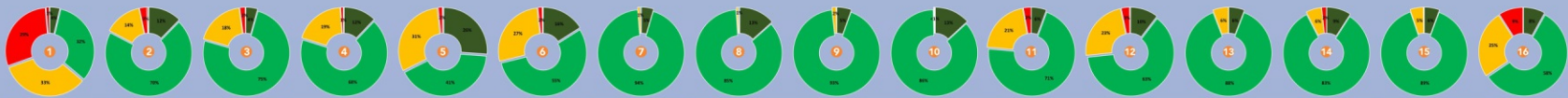


Pedestrian Transit Challenges

- OKI reports average daily traffic count is 5,000-14,999.
- Erlanger School District is a walking district, no bus transportation is provided.
- The intersection at Kimberly and Stevenson is an atypical configuration and is heavily traveled by Arnett Elementary students.

Google Traffic Observations

(March 5-18, 2018)



NKYmapLAB

April 2018 Volume 6: Map 2

Northwest Kentucky mapLAB is a non-profit organization dedicated to providing mapping and geographic information services to the community. The goal of the organization is to provide a wide variety of mapping and geographic information services to the community in a cost-effective manner. The organization is currently seeking funding to support its operations and expand its services.

Google Traffic

N/A
 None
 Free Flow
 Slowed
 Heavy
 Very Heavy

Traffic Flow Direction

Featured Data Sources

www.oki.gov
www.links.org
www.pdsc.org
www.erlangerky.gov

@NKYmapLAB

PDS

NKYmapLAB Awards

2017-2018	2018-2019	2019-2020
1st Place	1st Place	1st Place
2nd Place	2nd Place	2nd Place
3rd Place	3rd Place	3rd Place

direction 2030

Your Voice. Your Choice.

Goals and Objectives

C Community Identity	H Health	N Natural Systems
E Economy	HC Healthy Communities	P Primary Goal
G Governance	M Mobility	S Secondary Goal

How Does This Topic Apply to Direction 2030?

M Enhance and expand the effectiveness of the transportation system by promoting multimodal approaches that address the needs of all users.

H Promote viable transportation options for all demographics.

H Increase the convenience and efficiency of using multiple modes of transportation including driving, transit, walking or biking.

