



Riverfront Commons



Ludlow

2.2 Miles of Riverfront Trails



The western terminus of Riverfront Commons is in the City of Ludlow. In 2017, two large sections of the trail will be constructed in the city on land owned by the city. Ultimately, Riverfront Commons will connect with the biking and hiking trails in adjacent Devou Park and serve as a launch point for bikers who want to continue their ride along KY 8.

When completed, the trail also have access points to the downtown business district, where Ludlow Yards, an in-fill development project on KY 8 near the railroad, and other new developments are planned. The Ludlow Yards project will convert an old warehouse -- along with new construction -- to create a new mixed-use development.

Covington

2.7 Miles of Riverfront Trails



The City of Covington, the largest city in Northern Kentucky, will be the home of more than two miles of Riverfront Commons when completed -- running from the City of Ludlow to the Licking River. In 2017, a large section of the trail that will run along the Ohio River from the foot of Madison Avenue to the end of the floodwall at Western Avenue will be completed.

In 2018, the city will begin construction of a new \$10-million riverfront park between Madison Avenue and Greenup Street, which will serve as a trailhead and access point from trail into city's business and entertainment districts. These improvements include an elevated promenade, streetscape enhancements, water features, and other infrastructure and improvements.

Newport

1.3 Miles of Riverfront Trails



The City of Newport, the oldest city in Northern Kentucky, has some of the most completed sections of Riverfront Commons. A large section of the trail runs from the Fourth Street Bridge over the Licking River along the Ohio River, past Newport on the Levee, to the Daniel Carter Bridge. The Purple People Bridge, the pedestrian-only bridge, connects the trail to Cincinnati.

In November 2016, the \$4-million Taylor Creek Overlook Park along the trail opened to the public. In 2017, several new trail construction projects will be completed in Newport, including pedestrian bridges connecting to the sidewalks on the Taylor Southgate Bridge and trail extensions along Riverboat Row and Dave Cowens Drive.

Bellevue

0.8 Miles of Riverfront Trails

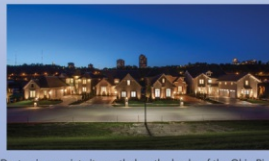


The City of Bellevue is a charming city founded in 1870 with a bustling business district along Fairfield Avenue, historic homes and structures near the river and on the hills above it, and new residential housing along the river. The first portion of the Riverfront Commons project in Bellevue is expected to be completed 2018.

Plans are in place to construct a trail through Port Bellevue, which includes three restaurants, commercial and office space, and residential condominiums. When completed, the trail will continue from this location and run through the city to Thomas J. Wiethorn Memorial Beach Park, where it will connect with the existing trails in Dayton.

Dayton

2.6 Miles of Riverfront Trails



Dayton is a quaint city nestled on the banks of the Ohio River just minutes from downtown Cincinnati. Celebrating a vivid past while embracing the promise of a bright future, including projects like Manhattan Harbour residential development on the Dayton riverfront levee, Dayton is reconnecting with the Ohio River and bringing a renewed vibrancy to the city.

A large section of the Riverfront Commons trail already exists in Dayton on the top of the levee. In 2017, a new, separate trail will be constructed along the river's edge. This will include two piers that hug the shoreline as well as handicap ramps that access the walkways and piers. The trail will also be extended to connect with KY 8.

Fort Thomas

2.5 Miles of Riverfront



Founded in 1867, the City of Fort Thomas is celebrating its 150th anniversary as a city this year. With a population of more than 16,000 people over six square miles, Fort Thomas is Campbell County's largest city. The city is known for its beautiful homes, excellent public schools, and outstanding parks.

When completed, Riverfront Commons will run along KY 8 from Dayton to Fort Thomas' southern border near the Combs-Helm (I-275) Bridge over the Ohio River. The trail will connect with existing trails in Tower Park, which will allow hikers and bikers to visit the city's historic Tower Park and its nearby business districts.

2017 Construction Projects



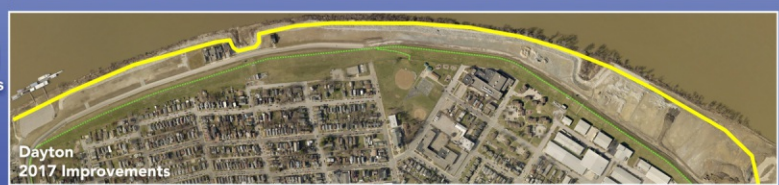
Ludlow 2017 Improvements



Covington 2017 Improvements



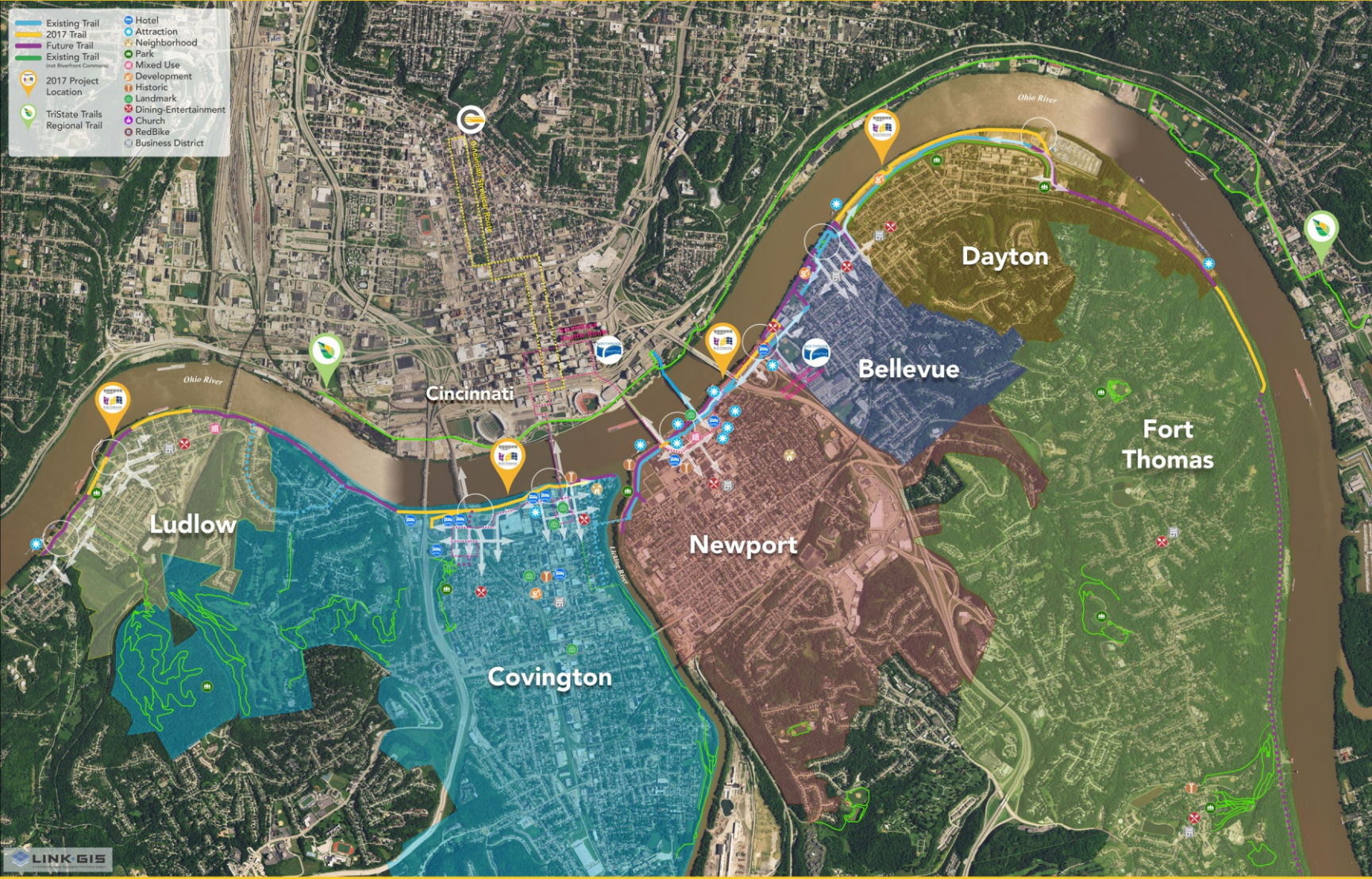
Newport 2017 Improvements



Dayton 2017 Improvements

\$4.0 M
Improvements
in 2017

- Existing Trail
- 2017 Trail
- Future Trail
- Existing Trail (not Riverfront Commons)
- 2017 Project Location
- TriState Trails Regional Trail
- Hotel
- Attraction
- Neighborhood
- Park
- Mixed Use
- Development
- Historic
- Landmark
- Dining-Entertainment
- Church
- RedBike
- Business District



Poster and Story Map developed by

