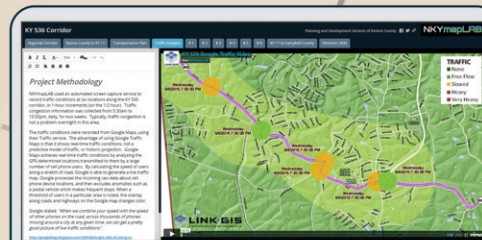


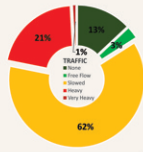
KY 536 Corridor Traffic Patterns



The data portrayed here are part of a more comprehensive GIS analysis of traffic patterns along KY 536. Six separate locations were monitored over a 2-week period as part of this analysis. There is also a 3-minute video that shows hourly traffic flow at each location over the 2-week period, and can be found in an online interactive format at: linkgis.org

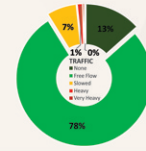
Location 1

Bristow Rd. (KY 536) & Turkeyfoot Rd. (KY-1303)



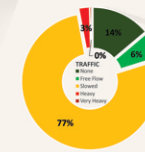
Location 2

Bristow Rd. (KY 536) & Banklick Rd. (KY 2043)



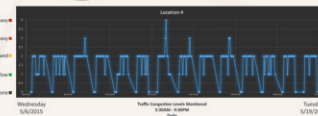
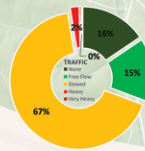
Location 3

Bristow Rd. (KY 536) & Independence Rd. (North)



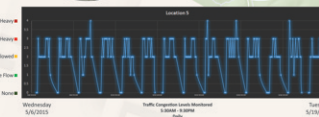
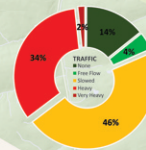
Location 4

Bristow Rd. (KY 536) & Independence Rd. (South)



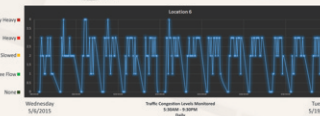
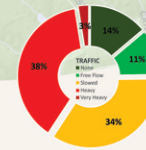
Location 5

Shaw Rd. (KY 536) & Madison Pike (KY 17) (West)



Location 6

Shaw Rd. (KY 536) & Madison Pike (KY 17) (East)



direction 2030
Your Voice. Your Choice.

Plan Goals & Objectives

C Community Identity	H Health	N Natural Systems
E Economy	HC Healthy Communities	Primary Goal
G Governance	M Mobility	Secondary Goal

How Does This Topic Apply to Direction 2030?

M Improve the ability of residents to live a healthy lifestyle.

HC Promote increased roadway connectivity between activity nodes to reduce congestion on major thoroughfares.

H Increase the convenience and efficiency of using multiple modes of transportation including driving, transit, walking or biking.

Key Recommendations:

"A major widening of the KY 536 corridor from the county boundary to KY 17 is currently being planned and will provide much needed east/west connectivity to that portion of Kenton County. The roadway has the potential to bring additional residential and economic development opportunities to the City of Independence. It is recommended that the impact and opportunities created by the widening project be studied prior to its completion."

— Direction 2030 Land Use Element

"Improve east/west connectivity that links Boone, Campbell and Kenton counties."

— Direction 2030 Mobility Element

"Kenton County has historically had reliable north to south mobility and has faced challenges when moving east to west connectivity. While KY 536 carries traffic across the county, it is a winding, two-lane road fraught with numerous stop signs and necessary turns to avoid topographic challenges in the landscape."

— Direction 2030 Mobility Research Report

May 2015 Volume 1: Map 5

Map Features

- KY 536 Corridor
- US and State Hwy Roads
- County and Local Roadways
- Traffic Observation Location

Traffic Flow

- Free Flow
- Slowed
- Heavy
- Very Heavy

Featured Data Sources

www.direction2030.org
www.linkgis.org
www.google.com/maps
www.aki.org/kenton/fullreport

