


Complete Streets




October 2017
National Community Planning Month
"Innovation in Planning"

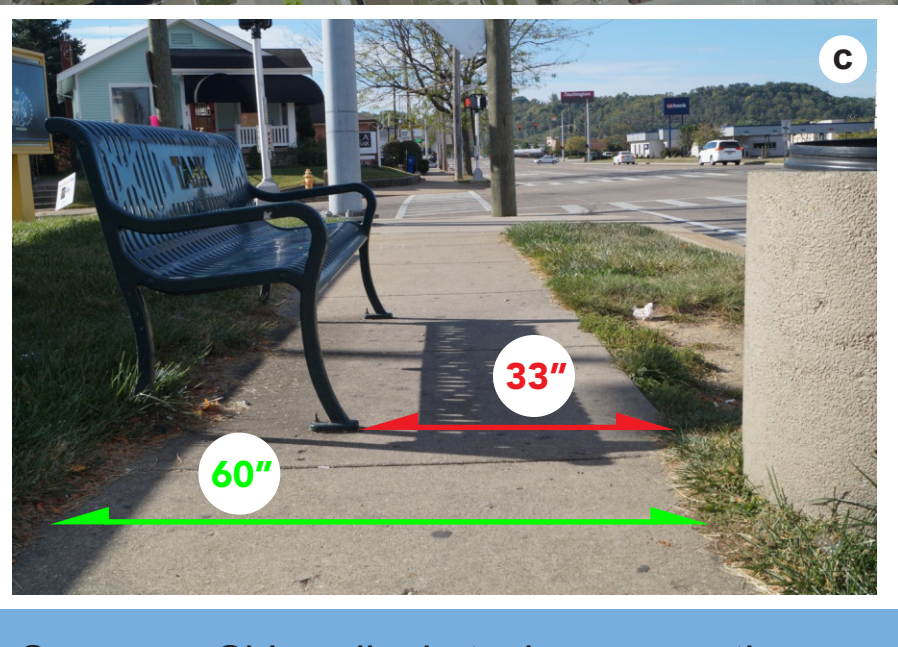
The theme for National Community Planning Month 2017 is **Innovation in Planning**. It underscores the important role planning plays in helping communities address and adapt to change. Innovation includes everything from using data-driven technology to celebrating new approaches to creating communities of lasting value. Complete streets, the theme of this NKYmapLAB project, is a good example of a new approach to dedicated rights of way, redeveloping them for additional means of travel.



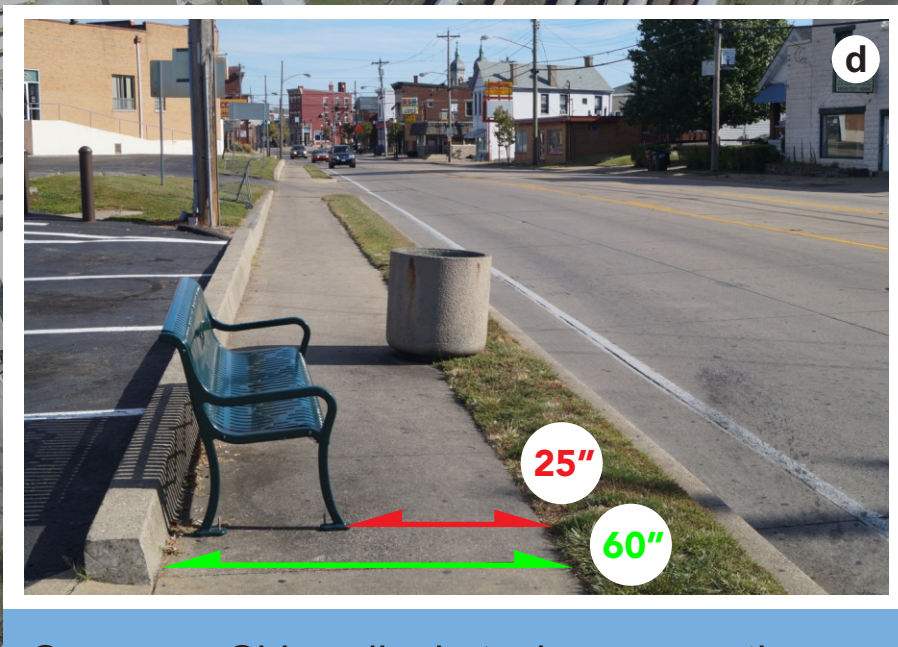
Concern: Sidewalk obstacles narrow the usable portion from 78" to 47".
A wheelchair user needs a minimum of 36" clearance to use a sidewalk.



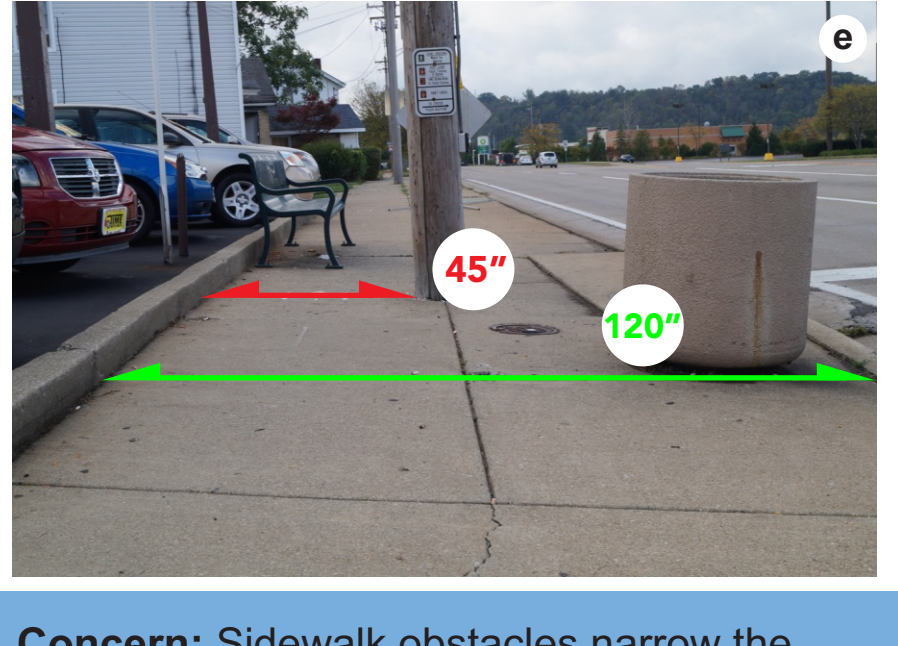
Concern: Steps narrow the usable sidewalk portion from 91" to 64".
A wheelchair user needs a minimum of 36" clearance to use a sidewalk.




Concern: Sidewalk obstacles narrow the usable portion from 60" to 33".
A wheelchair user needs a minimum of 36" clearance to use a sidewalk.



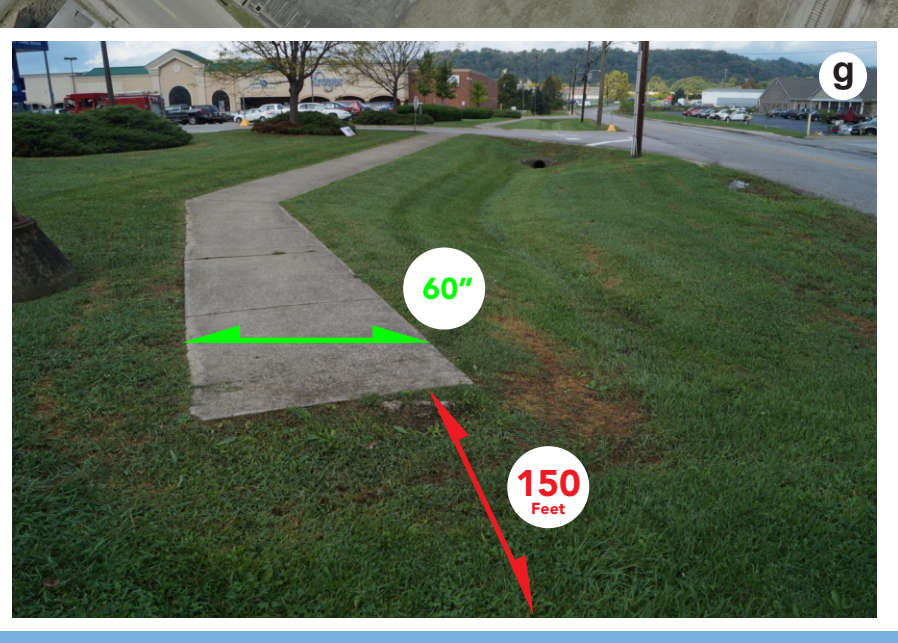
Concern: Sidewalk obstacles narrow the usable portion from 60" to 25".
A wheelchair user needs a minimum of 36" clearance to use a sidewalk.




Concern: Sidewalk obstacles narrow the usable portion from 120" to 45".
A wheelchair user needs a minimum of 36" clearance to use a sidewalk.



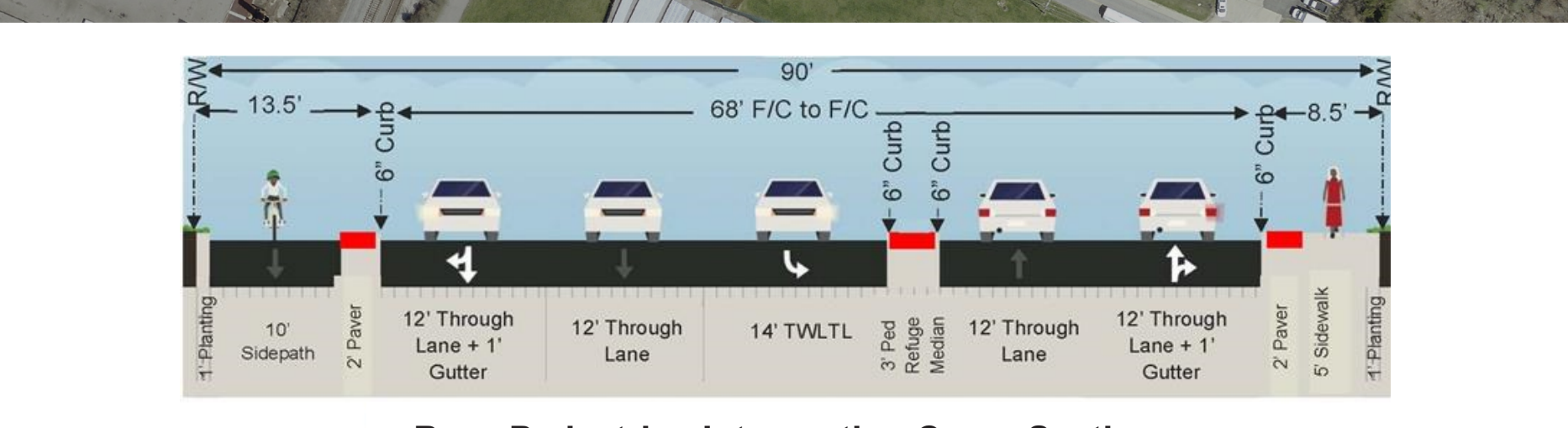
Concern: Sidewalk obstacles narrow the usable portion from 60" to 32".
A wheelchair user needs a minimum of 36" clearance to use a sidewalk.



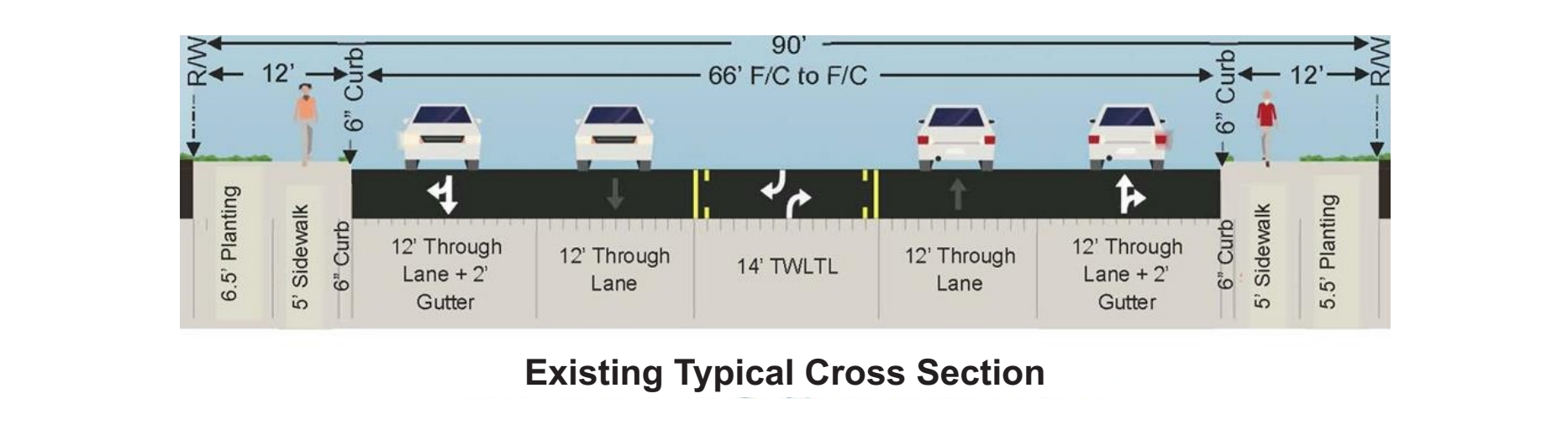
Concern: Lack of sidewalk connectivity from the existing sidewalk on Winston to Kroger.




Concern: Lack of time for elderly and disabled persons to travel the entire crosswalk.



Base Pedestrian Intersection Cross Section



Existing Typical Cross Section



Existing Alignment

Winston Avenue: Design drawings show what a pedestrian crosswalk (with island) will look like, along with a typical roadway cross section. Site photos show the existing alignment of Winston Avenue (photo from fall of 2017).


NKYmapLAB

October 2017 Volume 3: Map 6

Northern Kentucky mapLAB is a copyrighted, published product of Planning and Development Services of Kenton County. The goal of the initiative is to analyze and visualize data and present them in a more visual format that facilitates understanding by the public and its elected leaders. Suggestions for future analyses are always welcome.

Complete Streets

- Pedestrian traffic generator
- Commercial Area
- Signalized Intersection with Crosswalk
- CGN Placemaking Grant or Investment
- Pedestrian Traffic Pattern



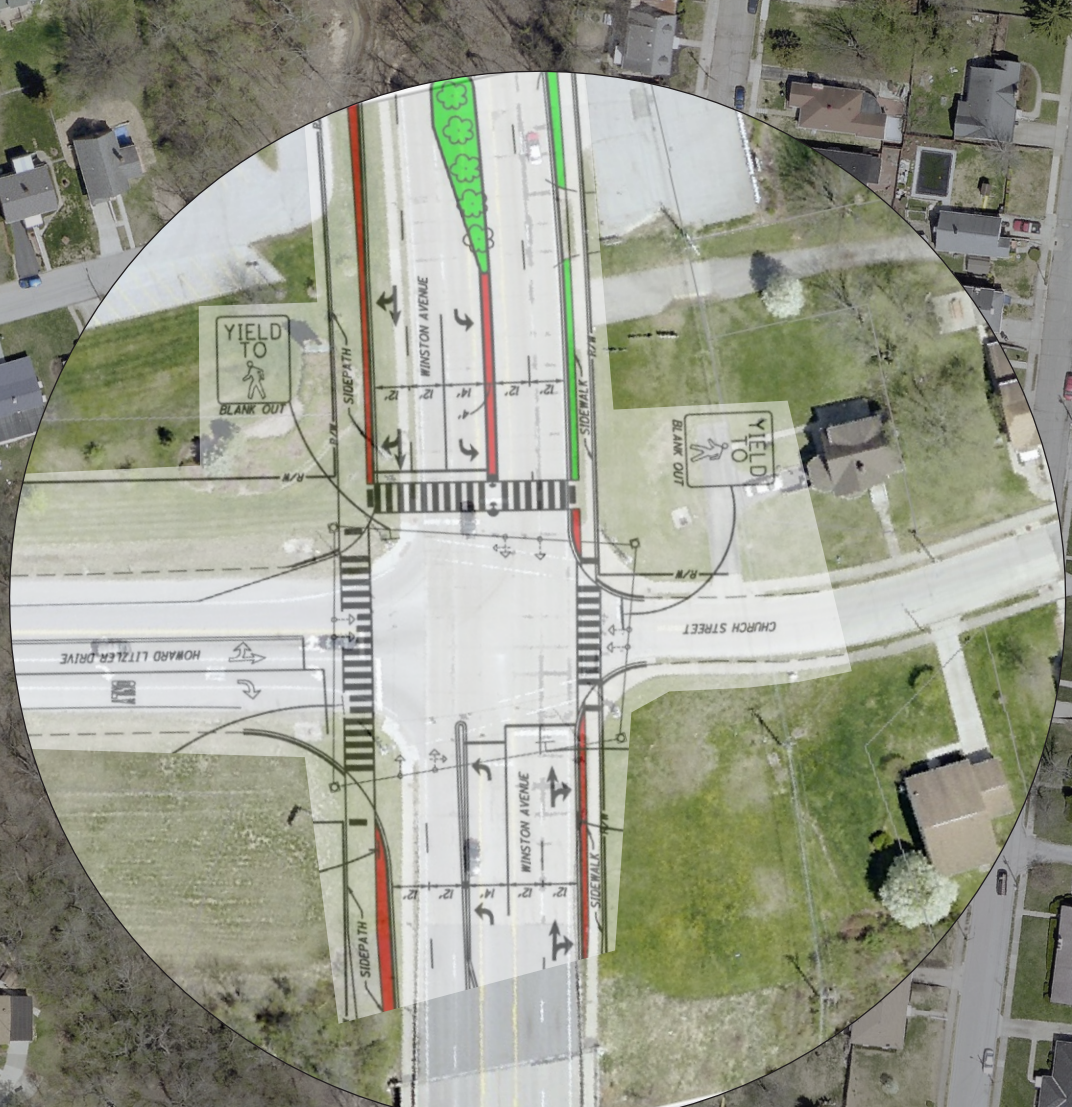
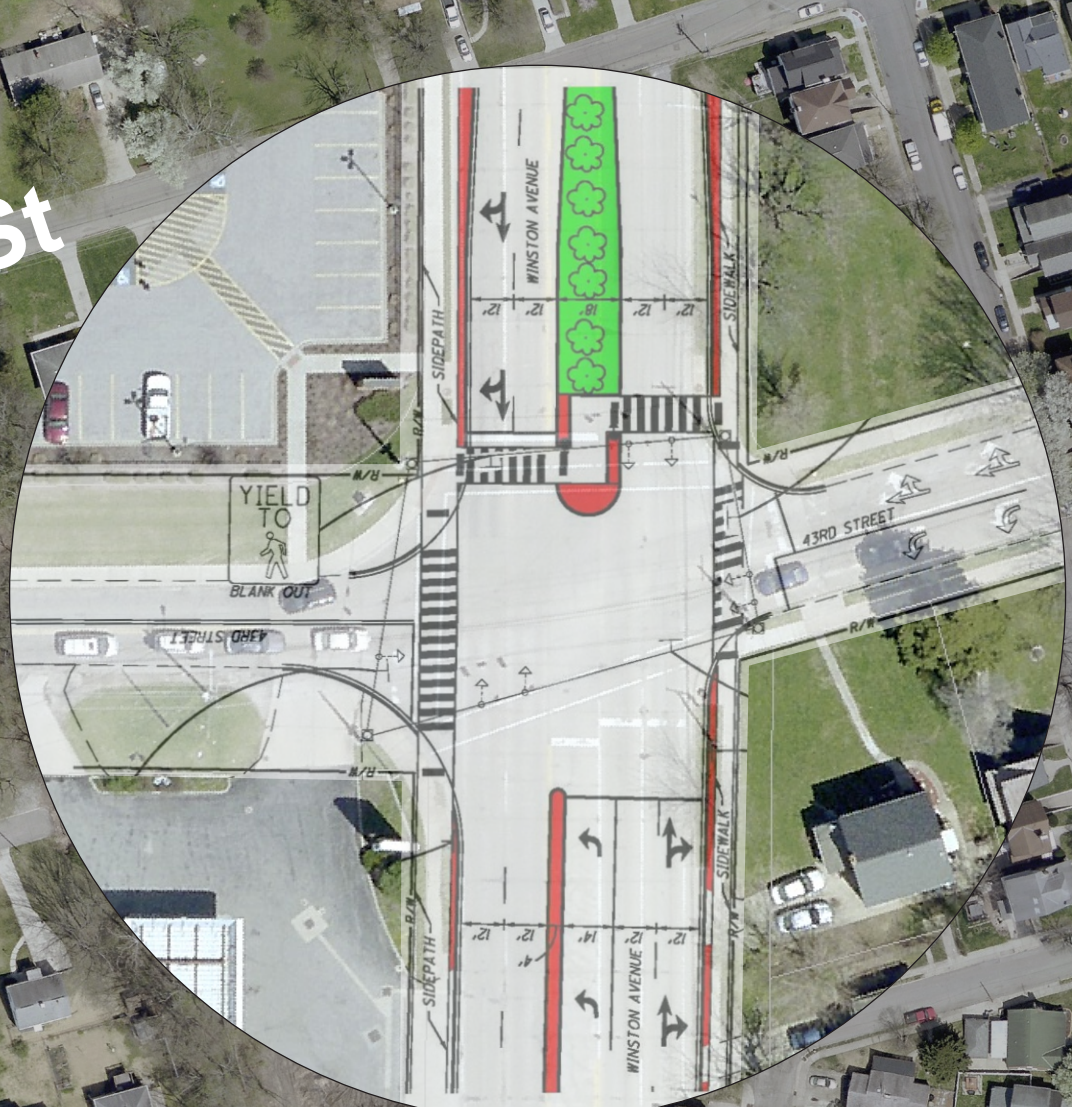
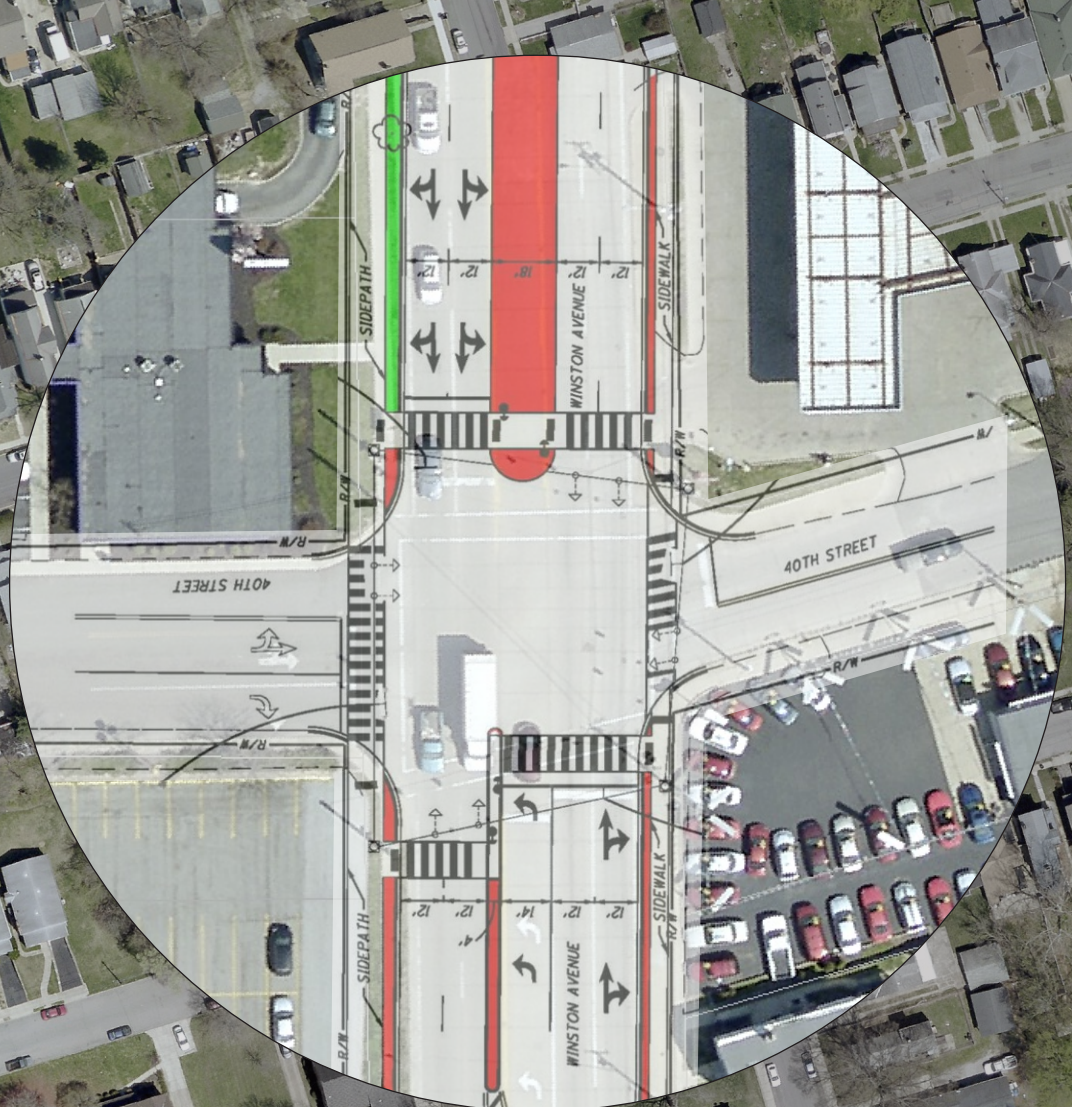
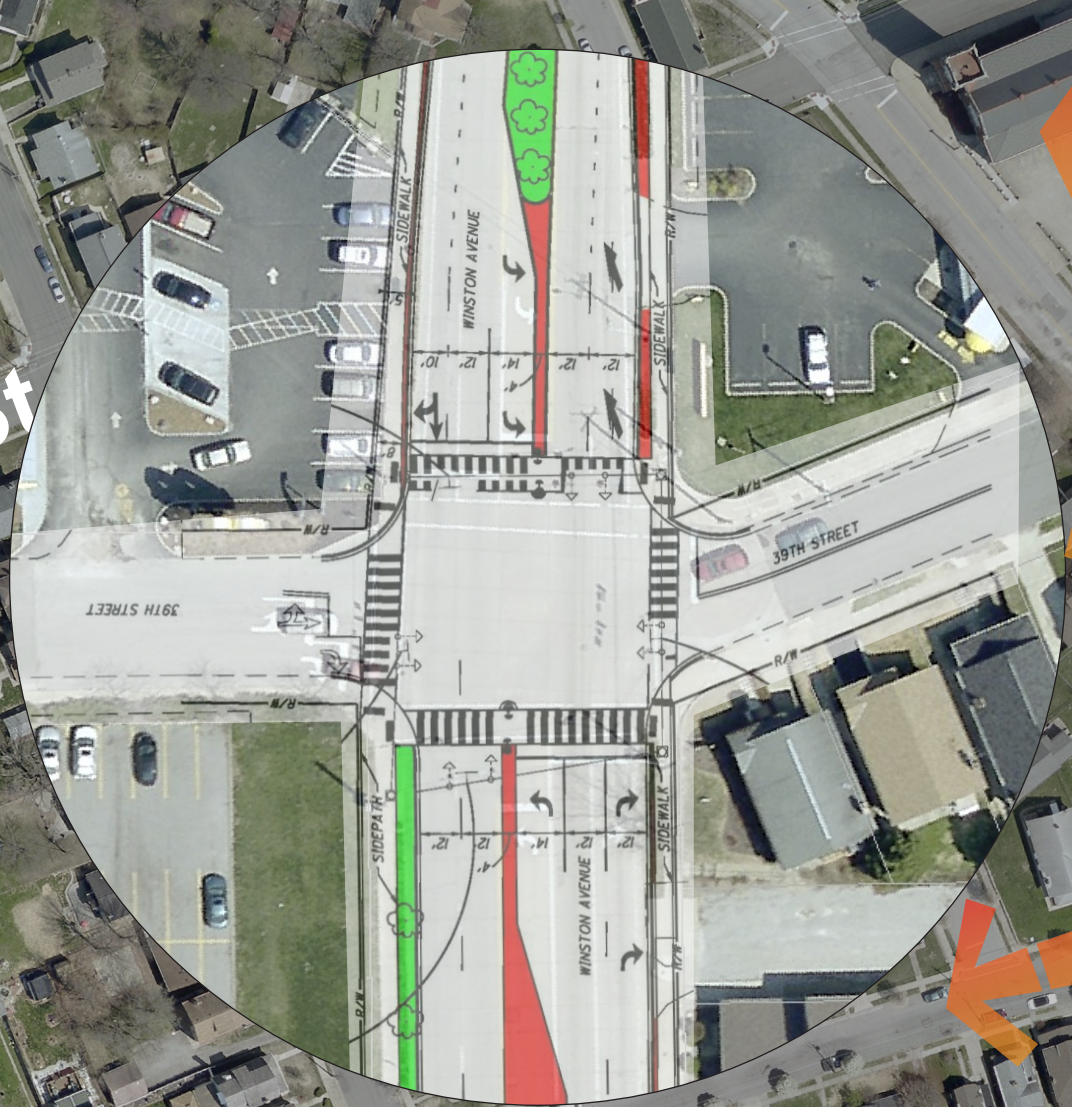
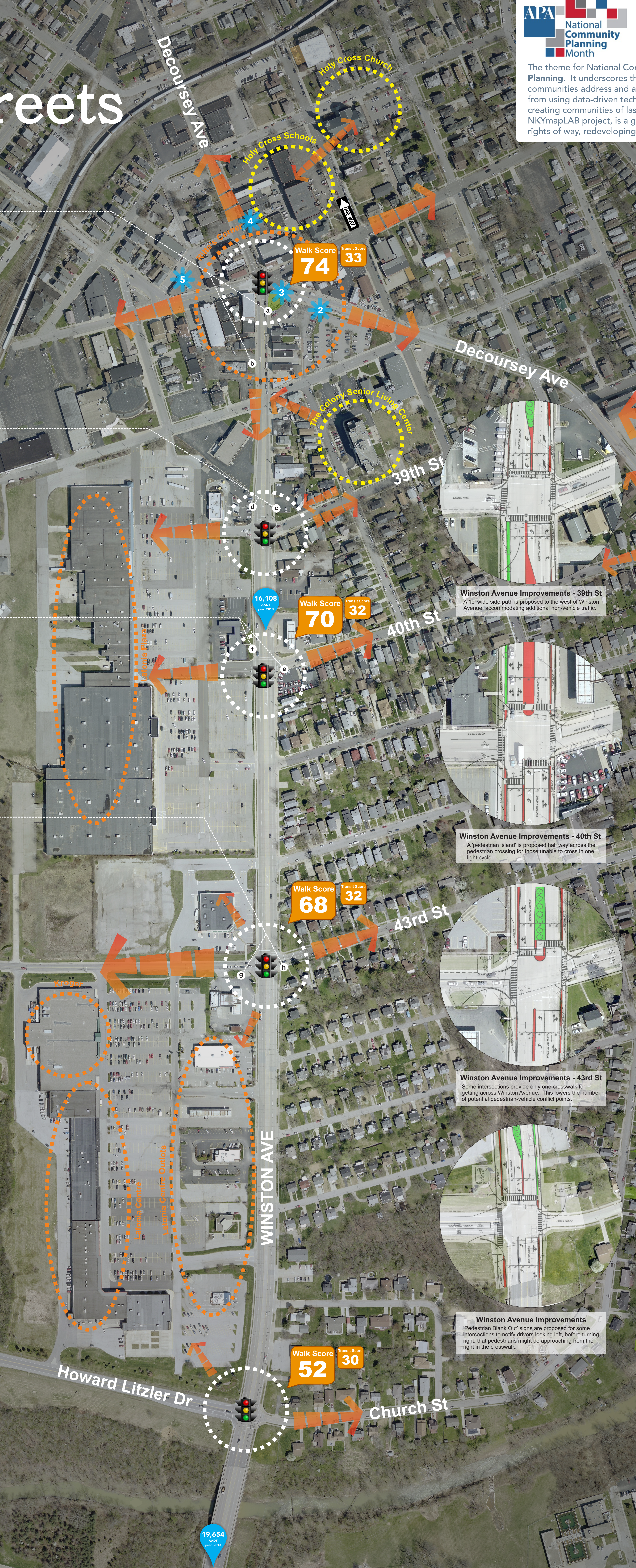
Locator Map

Featured Data Sources

- www.cki.gov
- www.linkgis.org
- www.pdsc.org
- www.transportation.ky.gov
- @NKYmapLAB

NKYmapLAB Awards

2017 KY GIS Story Map	2017 ESR UC Story Map	2014 KY GIS Map Gallery
2014 KYANA Outstanding Tech	2015 ESR UC Map Gallery	2015 ESR UC Map Gallery



Investments & Grants

Center for Great Neighborhoods (CGN)

- 1. Facilitated Grant (2014)**
A grant of \$250,000 provided a new multi-generational playground at Latonia Elementary School. The school playground is now a destination for all age groups in the Latonia neighborhood.
- 2. Place Matters Grant (2013)**
A grant of \$2,500 provided streetscaping and tree plantings at Ritte's corner - the north end of the Winston Avenue corridor.
- 3. Nano Grant (2015)**
A grant of \$250 helped fund the first ever "Light Up Ritte's Corner" event that included Christmas carolers, hot chocolate and cookies, and a visit from Santa.
- 4. Nano Grant (2016)**
A grant of \$250 helped fund the screening of "Old Latonia", a documentary covering Latonia's race-track history. A second grant of \$250 funded the setup of an old-fashioned themed "Old Latonia Photo Booth" in conjunction with the screening of the documentary.
- 5. Nano Grant (2016)**
A grant of \$250 brought the "Popped Art" trailer to the 2017 "Unlock the Block" event in Latonia. Popped Art works to build bonds between strangers through art.

Walk Score

Walk Score measures the walkability of any address based on the distance to nearby places and pedestrian friendliness. Transit Score measures how well an area is served by public transit on a scale from 0 to 100.

90-100 Walker's Paradise	Daily errands do not require a car
70-99 Very Walkable	Most errands can be accomplished on foot
50-69 Somewhat Walkable	Some errands can be accomplished on foot
25-49 Car-Dependent	Most errands require a car
0-24 Car-Dependent	Almost all errands require a car

direction 2030

Your Voice. Your Choice.

Goals and Objectives

C Community Identity	H Health	N Natural Systems
E Economy	HC Healthy Communities	Primary Goal
G Governance	M Mobility	Secondary Goal

How Does This Topic Apply to Direction 2030?

- HC** Strive to create and maintain places with a diverse character to draw talent and enhance livability.
- HC** Foster a sense of place by including elements that contribute to community pride.
- M** Enhance and expand the effectiveness of the transportation system by promoting multimodal approaches that address the needs of all users.
- H** Increase the convenience and efficiency of using multiple modes of transportation including driving, transit, walking or biking.