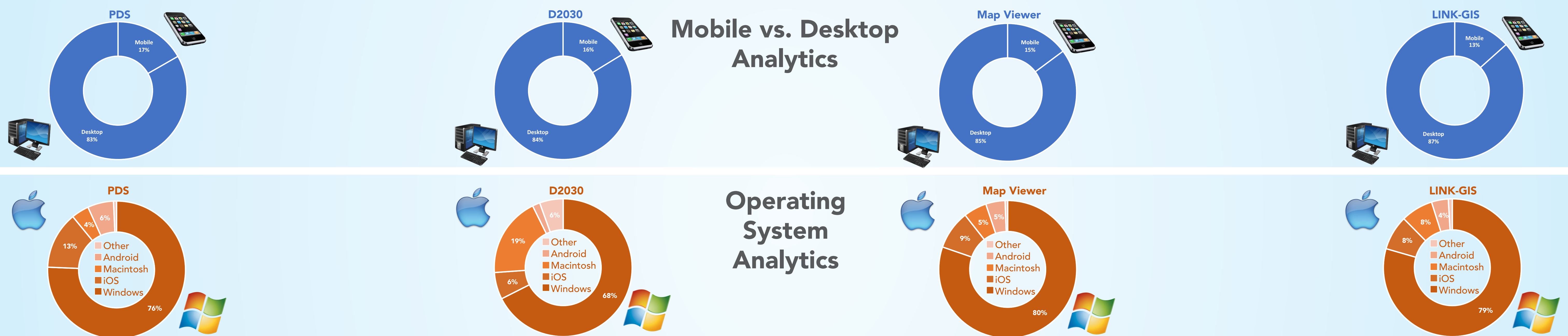
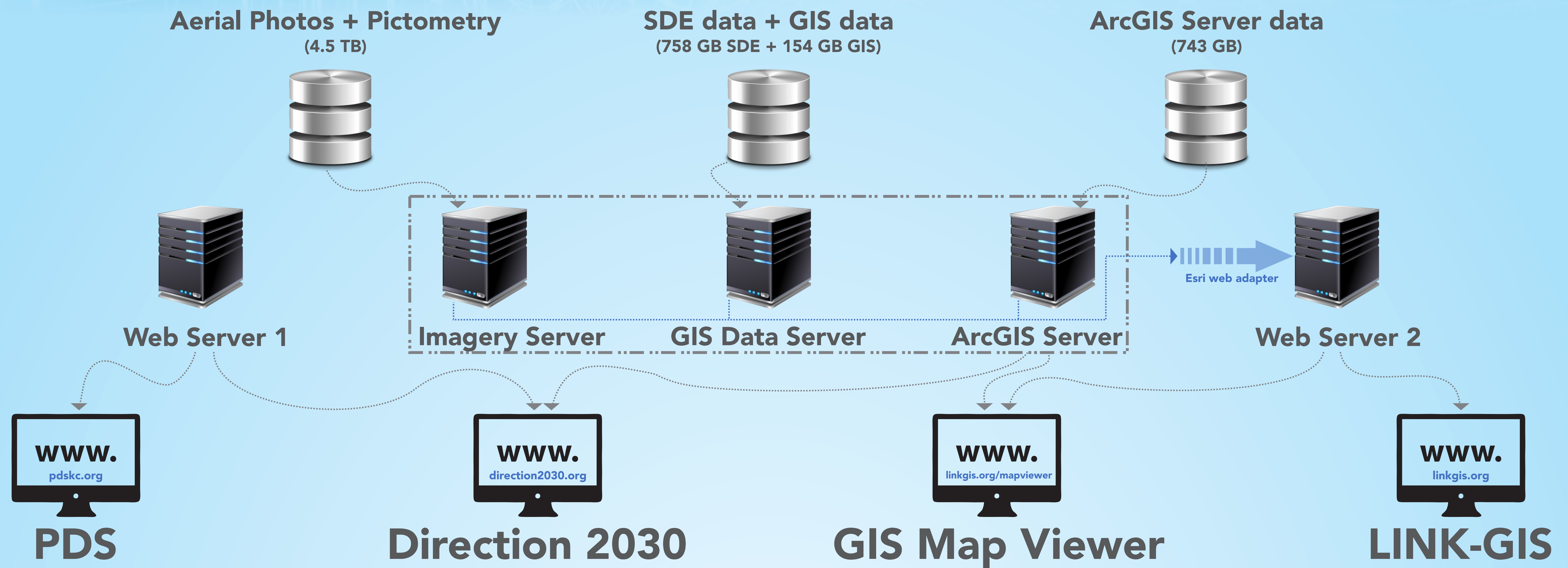


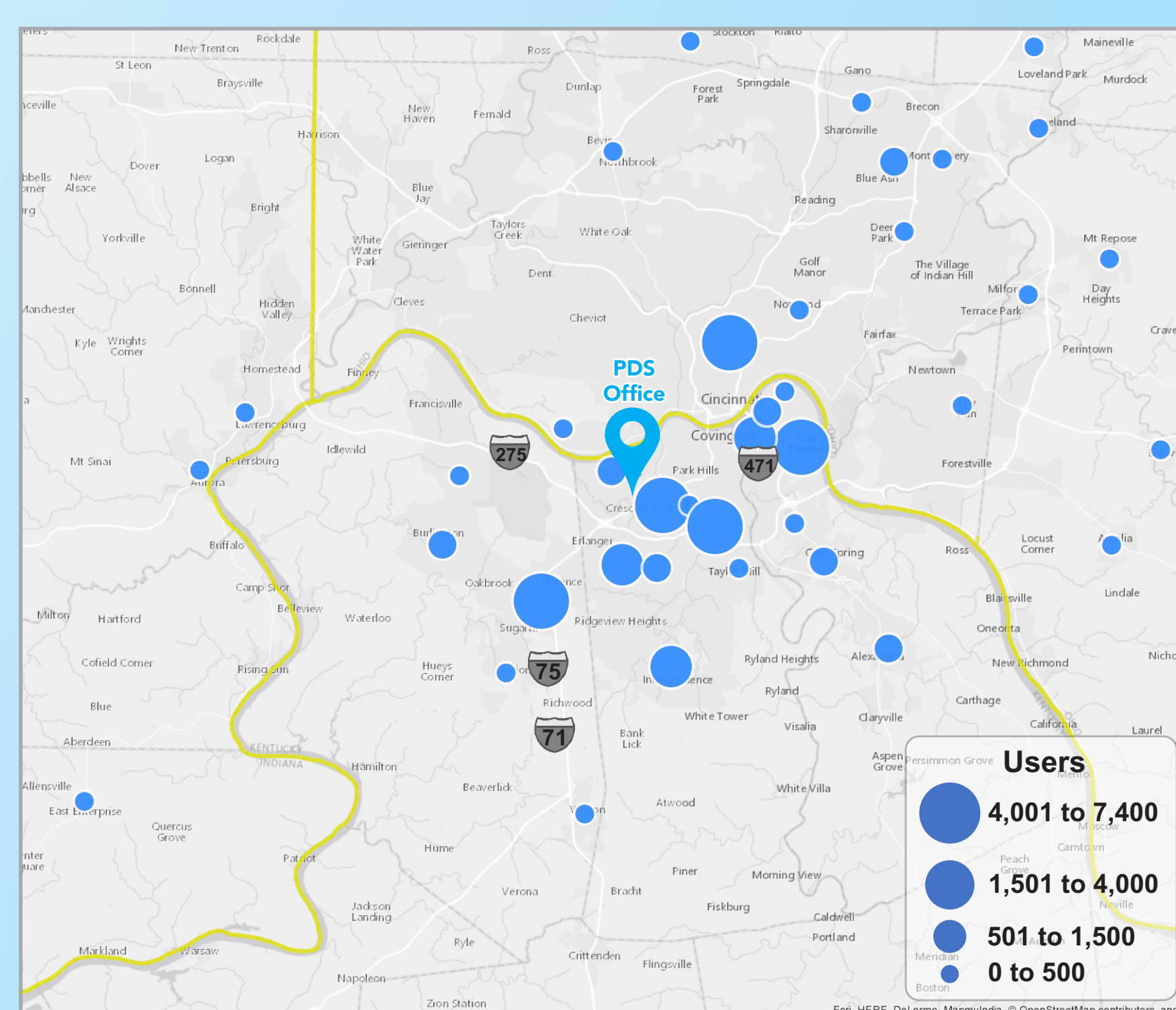
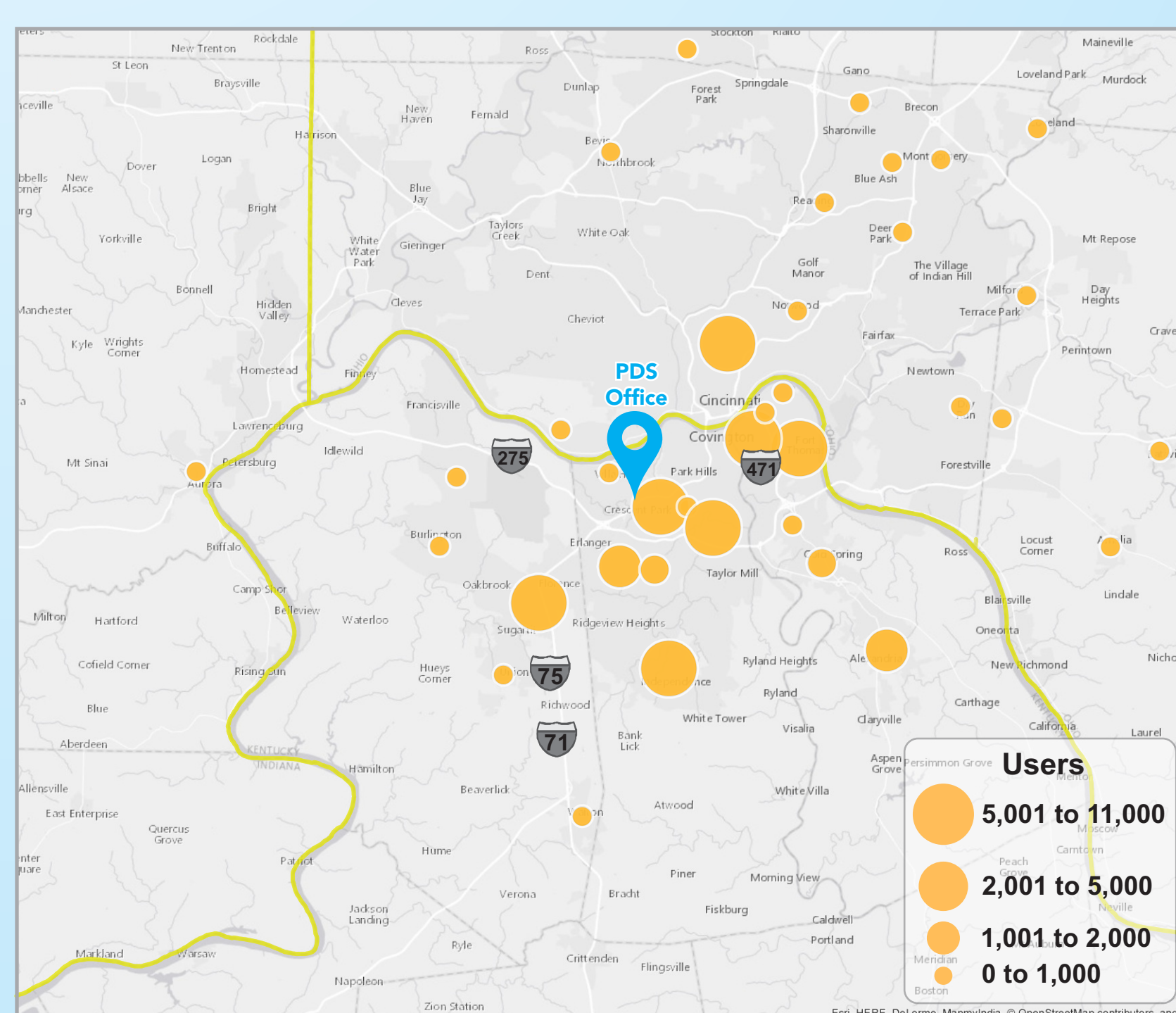
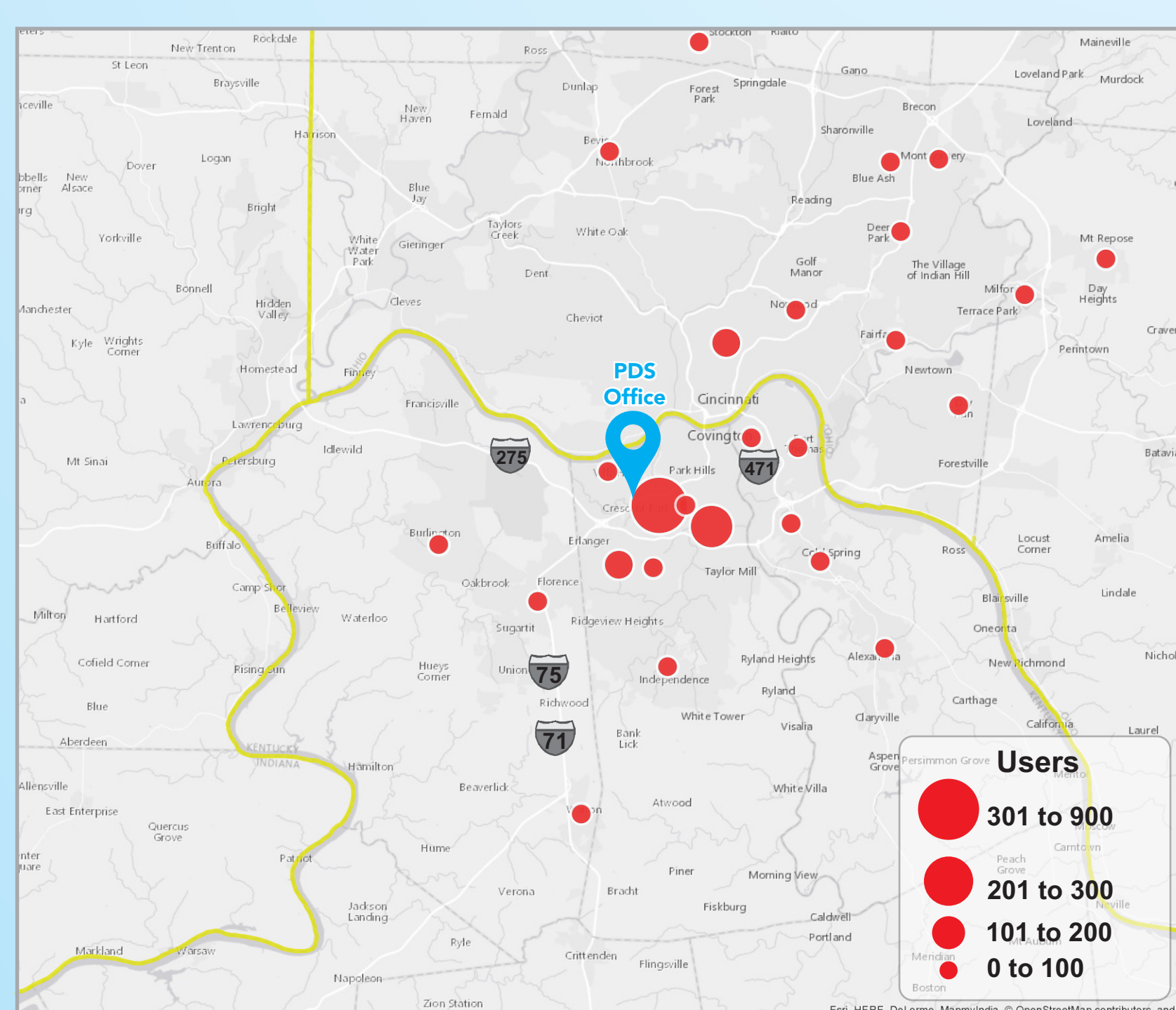
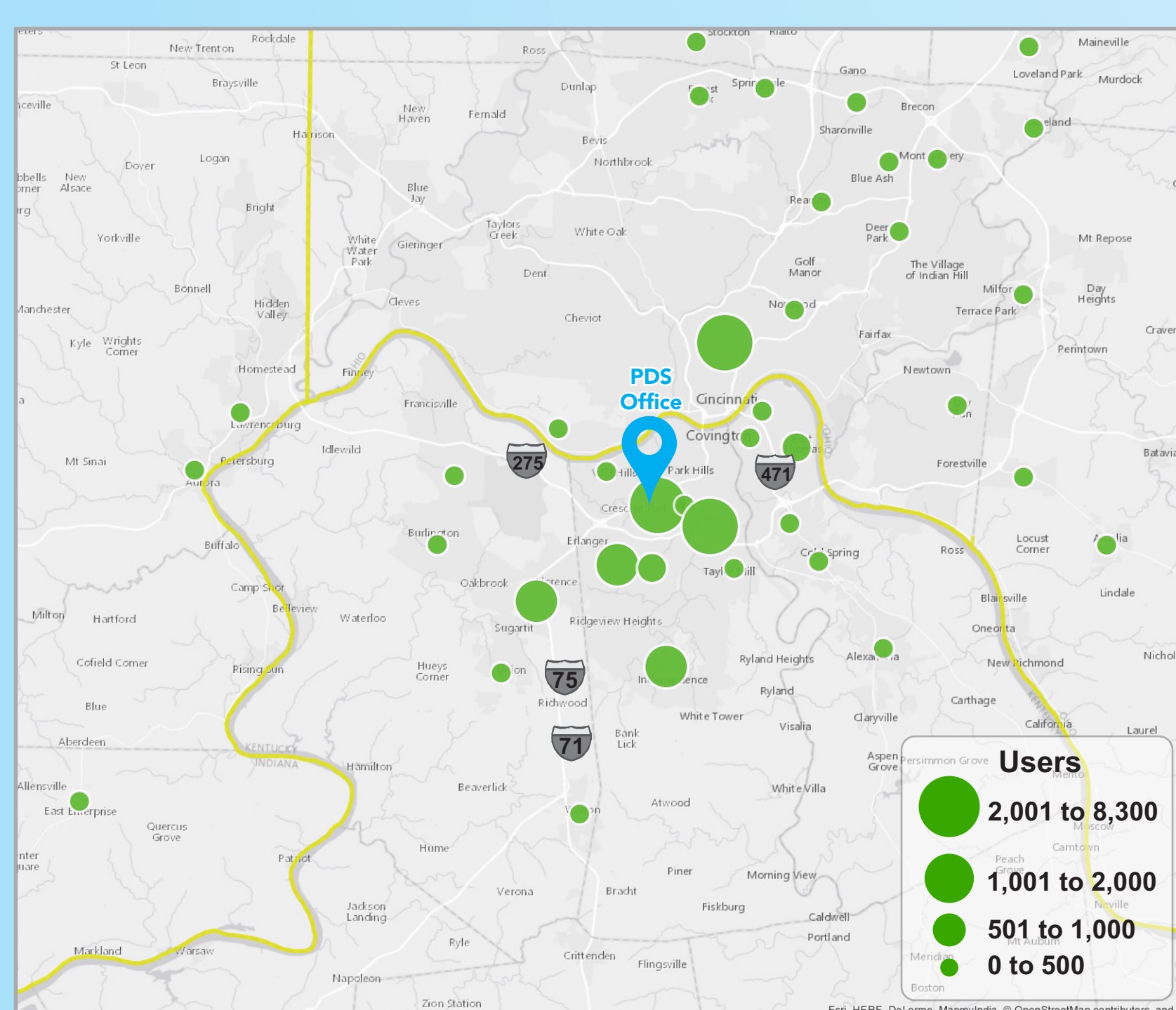
Website Analytics

PDS and LINK-GIS



Google Analytics

190,638 user sessions
on four websites during calendar year 2016



NKYmapLAB

January 2017 Volume 3: Map 1

Northern Kentucky mapLAB is a copyrighted, published product of Planning and Development Services of Kenton County. The goal of the initiative is to analyze web site data and present them in a more visual format that facilitates understanding by the public and its elected leaders. Suggestions for future analyses are always welcome.

User Sessions

- PDS website
- Direction 2030 website
- GIS Map Viewer website
- LINK-GIS website

PDS Office

2332 Royal Drive
Fort Mitchell, KY 41017

Google Analytics uses the term 'user session' to refer to a group of interactions that take place on a website within a given time frame, ending when the users leaves, or after 30 minutes of inactivity.

Featured Data Sources

www.direction2030.org
www.linkgis.org
www.pdskc.org

NKYmapLAB Awards

2016 KY GIS Map Gallery
2016 KYAPA Map Gallery
2015 KY GIS Map Gallery
2015 KYAPA Map Gallery

@NKYmapLAB

Website Analytics of PDS & LINK-GIS

During calendar year 2016, there were 190,638 sessions on four websites created, opened and managed by PDS. That is an average of 730 sessions per day, and an average of 730 sessions per weekday business day.

Using Google Analytics, this project explores the online presence and digital reach of these four websites:

- Planning & Development Services website
- Direction 2030 website
- LINK-GIS Website
- Map Viewer GIS Website

To visualize a group of interactions that take place on the website within a given time frame, the project explores the online presence and digital reach of these four websites.

PDS of Kenton County manages and hosts four websites that provide information on planning and zoning, code enforcement, engineering, building inspections, and GIS for Kenton County and its 19 municipalities. PDS provides information and tools for these services on four websites and this project explores the use of those websites. More information can be found in the Story Map at: linkgis.org

direction 2030
Your Voice. Your Choice.

Goals and Objectives

- C Community Identity
- E Economy
- G Governance
- H Health
- HC Healthy Communities
- M Mobility
- N Natural Systems
- Primary Goal
- Secondary Goal

How Does This Topic Apply to Direction 2030?

- G** Encourage cooperative governance.
- E** Promote the establishment of county-wide tools to create a business/development friendly environment.
- E** Identify opportunities for effective sharing of services

"A cornerstone of planning is the ongoing public dialogue on matters that are affecting them. The main objective of public input is to improve efficiency, transparency, and public involvement in the overall comprehensive planning process. As a vital part of the Direction 2030 plan, 105 public involvement opportunities were held, yielding hundreds of participants, and countless public comments."

-Direction 2030 "Input" Section