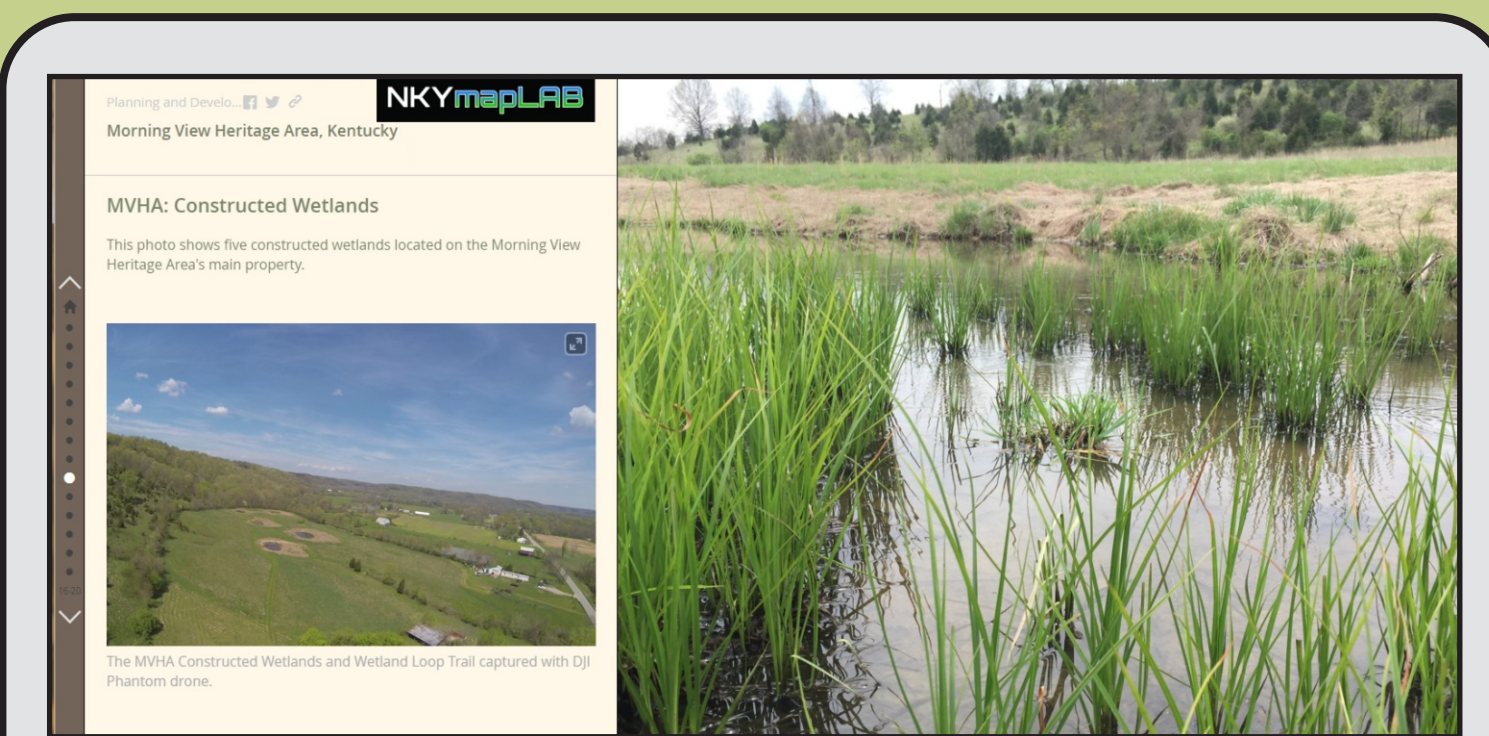
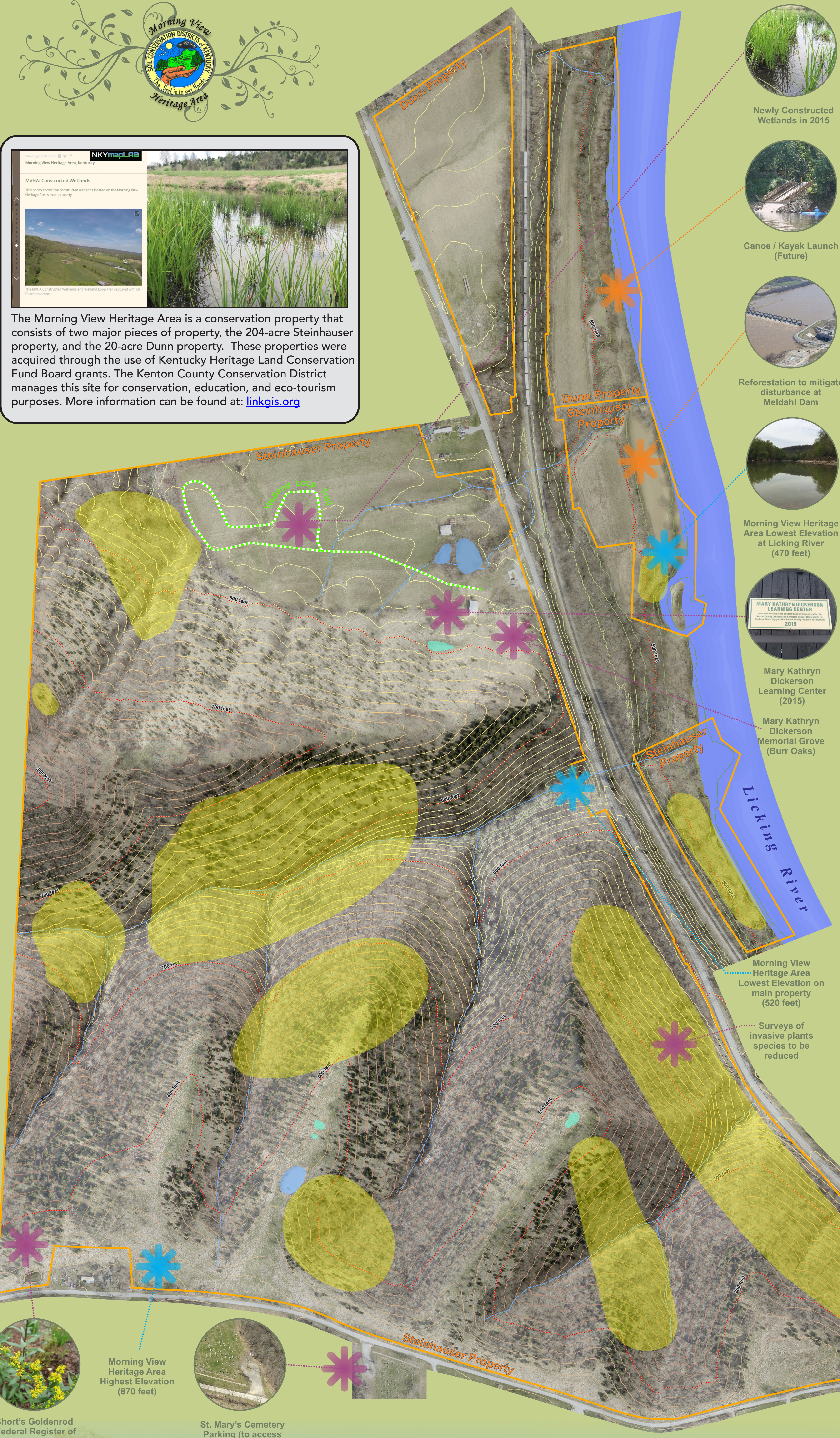


Morning View Heritage Area

• 15168 Decoursey Pike • Morning View, KY 41063 •



The Morning View Heritage Area is a conservation property that consists of two major pieces of property, the 204-acre Steinhauser property, and the 20-acre Dunn property. These properties were acquired through the use of Kentucky Heritage Land Conservation Fund Board grants. The Kenton County Conservation District manages this site for conservation, education, and eco-tourism purposes. More information can be found at: linkgis.org



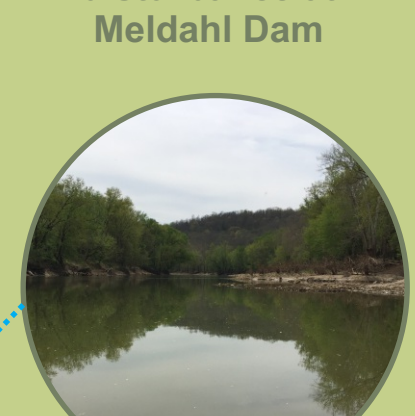
Newly Constructed Wetlands in 2015



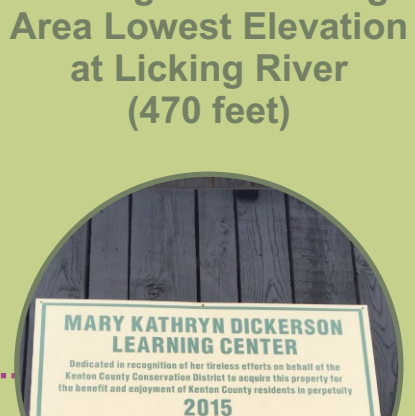
Canoe / Kayak Launch (Future)



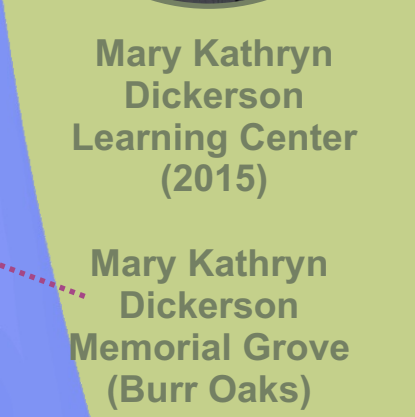
Reforestation to mitigate disturbance at Meldahl Dam



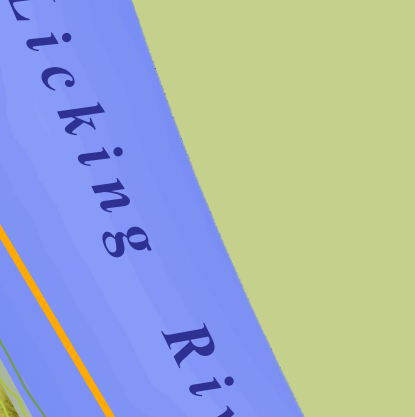
Morning View Heritage Area Lowest Elevation at Licking River (470 feet)



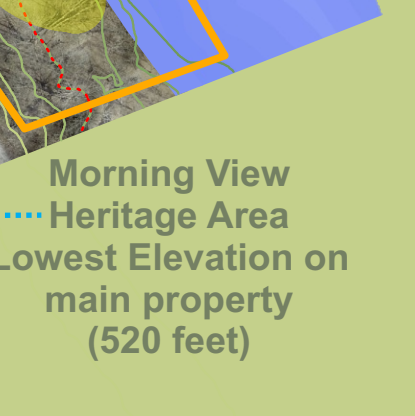
Mary Kathryn Dickerson Learning Center (2015)



Mary Kathryn Dickerson Memorial Grove (Burr Oaks)



Morning View Heritage Area Lowest Elevation on main property (520 feet)



Surveys of invasive plants species to be reduced



Short's Goldenrod (Federal Register of Endangered Species)
Actual location not shown on map



St. Mary's Cemetery Parking (to access MVHA ridges)

Heritage Land Conservation Fund



In February 2010 the Kenton County Conservation District was awarded a grant from the Kentucky Heritage Land Conservation Fund Board (KHLFCB) to purchase a little over 200 acres of land in southern Kenton County near Morning View. The grant funds were used to acquire the land as well as to assist with land restoration and making the area accessible for compatible public uses. The U. S. Fish and Wildlife Service has also dedicated funds to the project.

KHLFCB funds are generated through the sale of nature license plates in Kentucky, the state portion of the un-mined minerals tax, and environmental fines. **Land is acquired only from willing sellers.** The board's mission is to award funding for the purchase and preservation of selected natural areas in the Commonwealth to protect rare and endangered species and migratory birds, to save threatened areas of natural importance, and to provide natural areas for public use, outdoor recreation and education. This is the first project funded by the KHLFCB in Kenton County.

Property History

The village of Morning View, named by railroaders as "where they have the beautiful morning view," possesses a rolling green scenery that is breathtaking at any time of day. The land was formerly known as the Steinhauser Farm.

The Steinhauser family farm that is now the heritage property owned by the Kenton County Conservation District was home to John and Matilda, and six generations of their descendants, including son Dennis and his wife Mary and their three children Norma, Lea and Frederick.

In the 154 years that the Steinhausers were living on the Morning View property, they made many contributions to the local community. They ran a dairy farm as well as a store on their property. The Steinhauser family, along with another local family, the Jennings, donated the land for the establishment of St. Mary of the Assumption. For over a century and a half, the Steinhauser family played an important role in the development of Morning View.

Property Significance

The Kentucky Heritage Land Conservation Fund (KHLCF) easement on the Morning View Heritage Land protects more than 200 acres of forest and more than 3,600 feet of Licking River frontage.

The Kenton County Conservation District is working with the U.S. Fish & Wildlife Service to establish a population of the federally endangered Short's goldenrod on the site and to install a series of roosting structures to benefit the endangered Indiana bat.

A bottomland hardwood forest restoration project has also been initiated using mitigation funds and ephemeral wetland have been installed.

Youth organizations have assisted the district in removing invasive species. The KHLCF honored the late Mary Kate Dickerson for her efforts in organizing projects at the site.

The conservation property includes several acres along the Licking River that provides critical habitat for freshwater mussels, including a federally endangered species.

Eco-Tourism

The property includes several acres along the Licking River that could provide canoe and kayak launching access for the public, adding another link in a waterways trail for Northern Kentucky. The additional acreage provides the opportunity for hiking and other non-consumptive recreational and educational uses. Providing a place for these pursuits is important to the quality of life in Kenton County and can help generate tourism and related businesses for our county's economy while protecting an important part of our natural heritage.

Heritage Farm Tour

Experience Kentucky in the days before statehood. Engage with historical re-enactors and period tradesmen who will create an environment that frontiersmen like Simon Kenton experienced. Visit the Heritage Farm Tour 2016.

A Traders Camp will let you see firsthand the life and times of early Kentucky settlers. Take a guided or self-guided tour through the hills and wetlands of the Licking River Valley, and learn about future projects that promote conservation, recreation, and restoration of this historic and diverse habitat.



- 1 Morning View Heritage Area - 1780**
15168 Decoursey Pike
Morning View, KY 41063
Children's Activities Restroom
- 2 Goshen Christian Church/School & Cemetery 1970 - 1970**
1773 Bracht-Piner Road
Morning View, KY 41063
Farm Tractors
Eats and Treats
Children's Activities Restroom
- 3 Free Radical Ranch 1950 - Present**
1103 Bracht-Piner Road
Morning View, KY 41063
Farm Babies
Crafts
Children's Activities Restroom

direction 2030
Your Voice. Your Choice.

Plan Goals & Objectives

C Community Identity
E Economy
G Governance

H Health
HC Healthy Communities
M Mobility

N Natural Systems
Primary Goal
Secondary Goal

direction 2030
Your Voice. Your Choice.

Plan Goals & Objectives

How Does This Topic Apply to Direction 2030?

HC Celebrate the unique identity of communities within Kenton County.

E Preserve and enhance the viability of the rural heritage of southern Kenton County by encouraging the preservation of elements of the landscape which contribute to the rural character and removing barriers to support local agricultural operations.

N Promote adequate access to natural systems to encourage outdoor activities for all generations on public property.

M Promote connectivity within and from surrounding neighborhoods to public parks or natural areas to encourage walking and biking.

N,E Strive to achieve a balance between development and preservation.

E Explore the viability of a regional park system as a tool to attract talent and jobs into the community.

Key Recommendations:

"Encourage a variety of approaches to increase awareness and preservation of Kenton County's historically significant buildings, districts, communities, and sites."

NKYmapLAB

April 2016 Volume 2: Map 4

Northern Kentucky mapLAB is a copyrighted, published product of Planning and Development Services of Kenton County. The goal of this initiative is to provide a central source of local data and present them in a user-friendly manner that facilitates understanding by the public and its elected leaders. Suggestions for future analyses are always welcome.

Morning View Heritage Area

- Completed Improvements
- Future Improvements
- Natural Feature of Interest
- Wetland
- Pond
- Wetland Loop Trail
- 10-foot contour line
- 100-foot contour line

Featured Data Sources

- www.direction2030.org
- www.linkgis.org
- www.ncrs.usda.gov
- www.kentoncounty.org

PDS

NKYmapLAB Awards

- 2016 KYAPA Innovative Tech
- 2015 KY GIS Map Gallery
- 2015 ESR UC Map Gallery

@NKYmapLAB

Grand Opening Event Layout



- 1. Kenton Co. Conservation District Welcome Table
- 2. Other Stakeholder Booths
- 3. Native American Camp
- 4. Frontiersmen Camp
- 5. Tradesman Area
- 6. Foundation for Ohio River Education (FORE) workshops

Heritage Farm Tour Scenes



Farm Tractors
Farm Babies
Eats and Treats

Crafts
Children's Activities
Restroom

