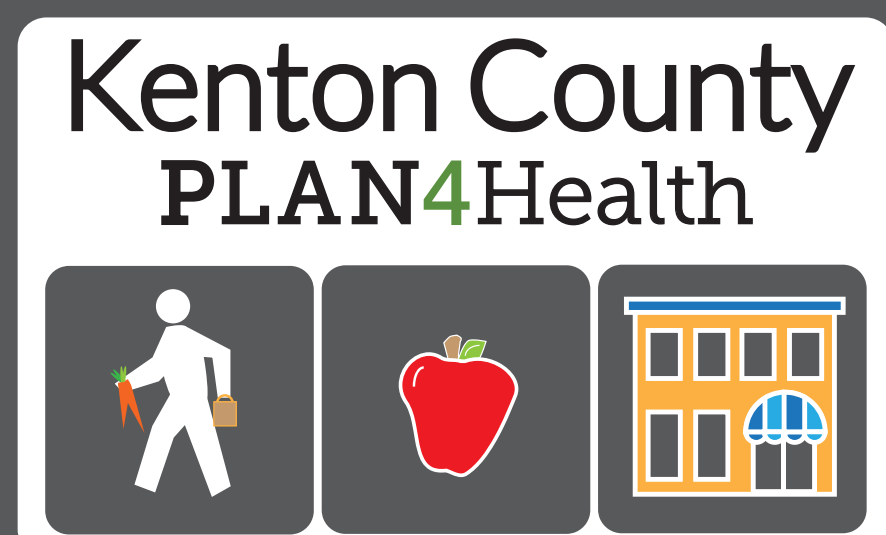


PLAN4Health

An American Planning Association Funded Project



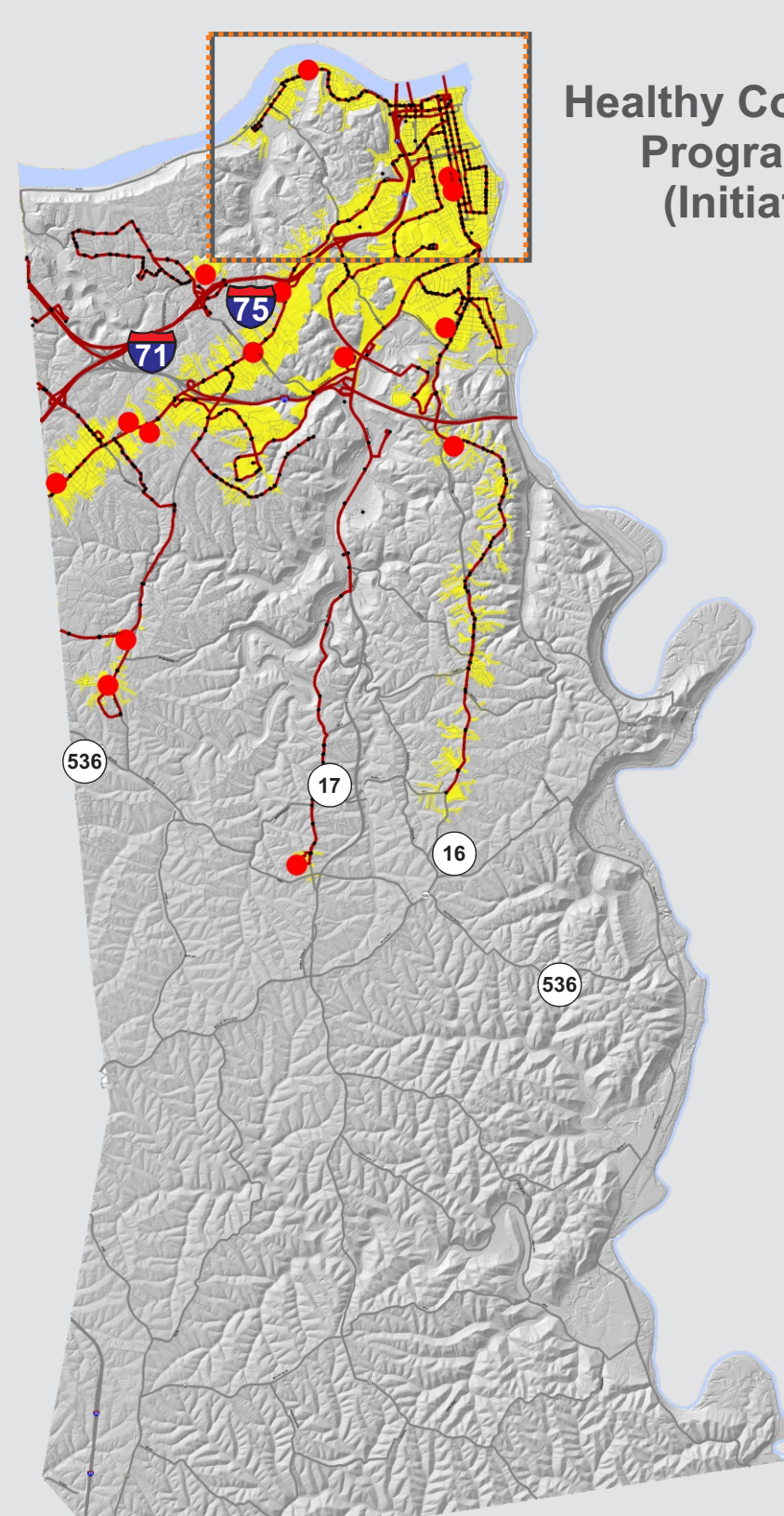
An APA grant funded project working to identify food deserts (little or no access to healthy food), establish a healthy corner store program, start a countywide education campaign, and form a food policy working group.

Initiative 1

Identify food deserts

Kenton County

Access to Full-Line Grocery Stores with 1/2 mile walk to TANK Bus Stop



Healthy Corner Store Program Area (Initiative 2)

PLAN4Health
Coalition Partners

Planning & Development Services of Kenton County
Northern Kentucky Health Department
Center for Great Neighborhoods of Covington
Ohio Kentucky Indiana (OKI) Regional Council of Governments



The Kenton County PLAN4Health Coalition is currently pursuing several initiatives: a countywide assessment of food deserts—underserved neighborhoods with little or no access to healthy food due to mobility, availability, affordability, or a combination of the three, and a healthy corner store program aimed at providing healthier food options with urban corner stores. More information can be found at: linkgis.org

direction 2030

Your Voice. Your Choice.

Plan Goals & Objectives

C Community Identity	H Health	N Natural Systems
E Economy	HC Healthy Communities	P Primary Goal
G Governance	M Mobility	S Secondary Goal

How Does This Topic Apply to Direction 2030?

HC Improve the ability of residents to live a healthy lifestyle.

M Promote safe and convenient non-automobile access to health care, healthy foods and key destinations in strategic locations to encourage physical activity to decrease chronic disease and improve air and water quality.

M Enhance and expand the effectiveness of the transportation system by promoting multimodal approaches that address the needs of all users.

H Increase the convenience and efficiency of using multiple modes of transportation including driving, transit, walking or biking.

NKYmapLAB

October 2015 Volume 1: Map 10

Northern Kentucky mapLAB is a copyrighted, published product of Planning and Development Services of Kenton County. The goal of the initiative is to analyze a wide variety of tabular data and present them in a more visual format that facilitates understanding by the public and its elected leaders. Suggestions for future analyses are always welcome.

Points of Interest

- Full Line Grocery Stores
- TANK Bus Stop
- TANK Bus Route

Convenience Store

- Convenience Store
- Healthy Corner Store (Plan4Health Participant)

Grocery Service & Food Access

- Area within 1/2 mile walk of Full-Line Grocery Store
- Area within 1/2 mile walk of TANK stop that accesses a Full-Line Grocery Store

Traffic Analysis Zones (TAZ)

Small geographic areas that are used by Cincinnati's Metropolitan Planning Organization (MPO) to project traffic and population trends.

TAZ - includes population, income, mobility, and elderly statistics

Featured Data Sources

- www.direction2030.org
- www.linkgis.org
- www.census.gov
- www.oki.org
- www.kyhealth.org
- www.tankbus.org

NKYmapLAB Awards

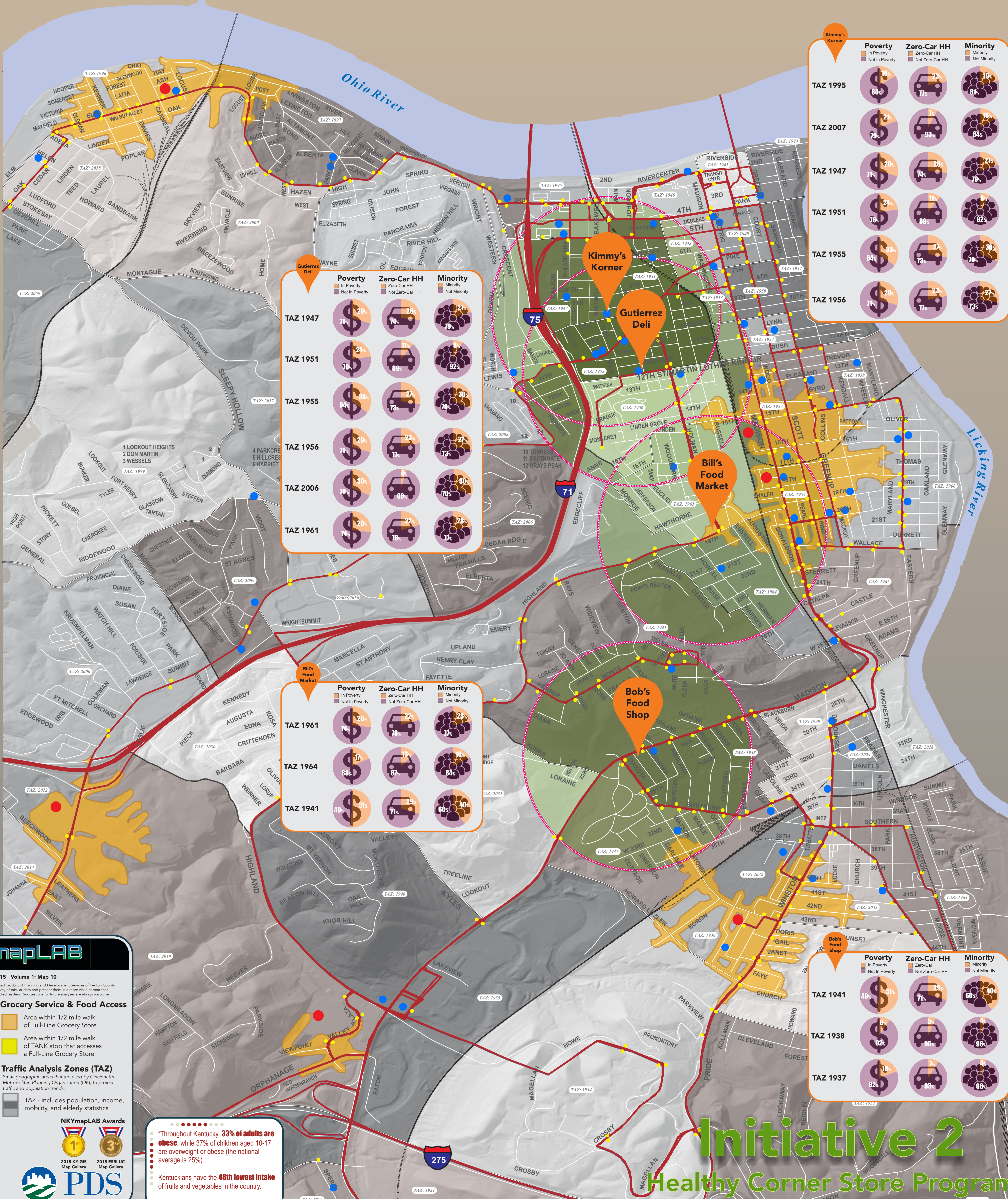
- 2015 KY GIS Map Gallery
- 2015 ESRI UC Map Gallery

PDS

Throughout Kentucky, 33% of adults are obese, while 37% of children aged 10-17 are overweight or obese (the national average is 25%).

Kentuckians have the 48th lowest intake of fruits and vegetables in the country.

- County Health Rankings



Initiative 2

Healthy Corner Store Program

