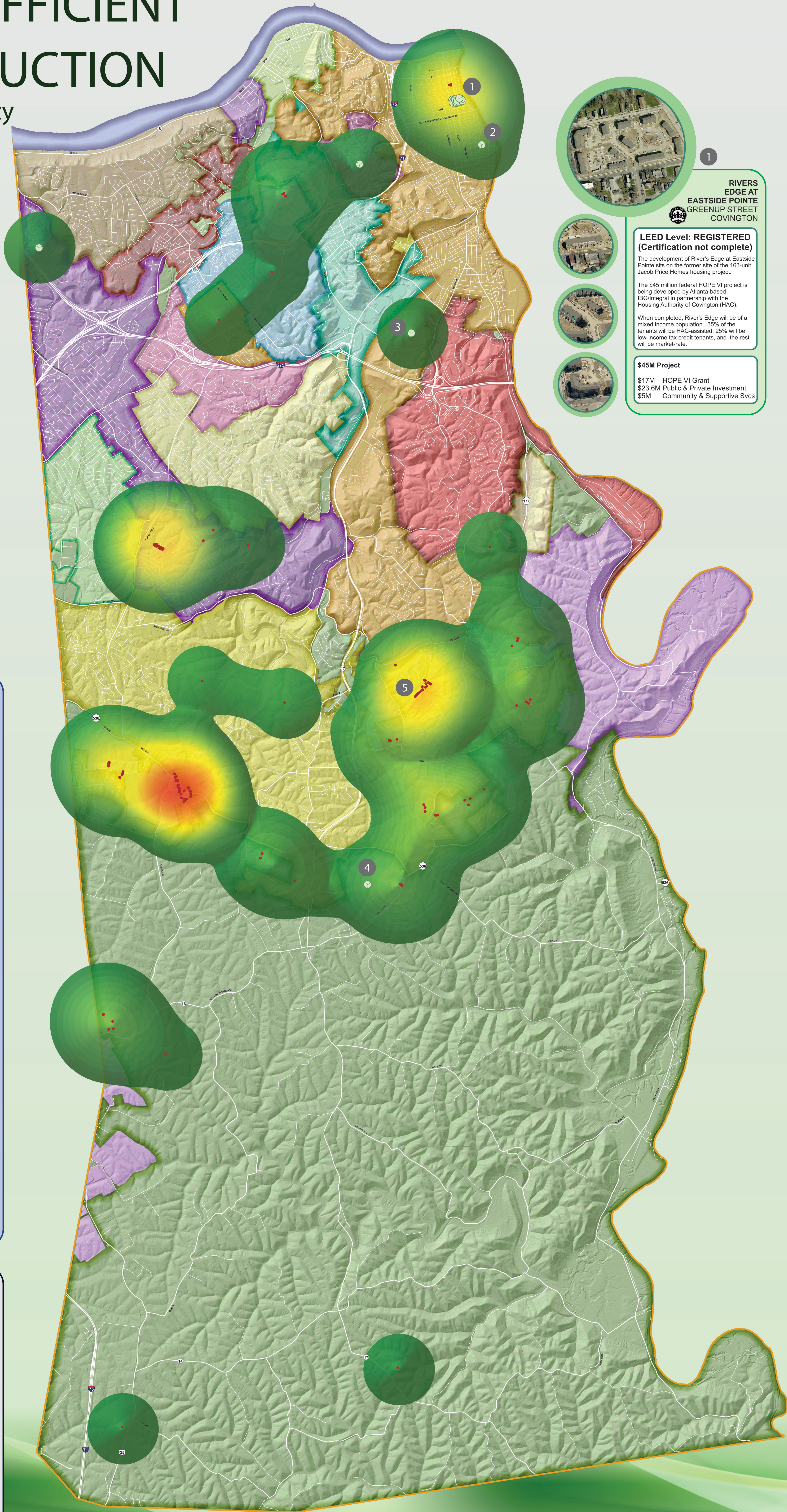


ENERGY EFFICIENT CONSTRUCTION

in Kenton County



2

SENECA PLACE ROWHOUSE
THOMAS STREET
COVINGTON

LEED Level: GOLD
Points: 83
Date: March 2010

3

FIDELITY INVESTMENTS OFFICE BUILDING
HOWE DRIVE
COVINGTON

LEED Level: CERTIFIED
Points: 30
Date: October 2008

4

TWENHOFEL MIDDLE SCHOOL
TAYLOR MILL RD
INDEPENDENCE

LEED Level: SILVER
Points: 37
Date: June 2009

1

RIVERS EDGE AT EASTSIDE POINTE
GREENUP STREET
COVINGTON

LEED Level: REGISTERED (Certification not complete)
The development of River's Edge at Eastside Pointe sits on the former site of the 163-unit Jacob Price Homes housing project.
The \$45 million federal HOPE VI project is being developed by Atlanta-based IBG/Integral in partnership with the Housing Authority of Covington (HAC).
When completed, River's Edge will be of a mixed income population. 35% of the tenants will be HAC-assisted, 25% will be low-income tax credit tenants, and the rest will be market-rate.

\$45M Project
\$17M HOPE VI Grant
\$23.6M Public & Private Investment
\$5M Community & Supportive Svcs

5

NEW (2012) RESIDENTIAL CONSTRUCTION
STABLEWATCH DRIVE
INDEPENDENCE

HERS Index: 38
Energy Star: Yes
NAHB Level: Gold
Date: January 2012

RESNET
RESIDENTIAL ENERGY SERVICES NETWORK

The Home Energy Rating System (HERS) Index is the industry standard by which a home's energy efficiency is measured. It's also the nationally recognized system for inspecting and calculating a home's energy performance.

A certified Home Energy Rater assesses the energy efficiency of a home, assigning it a relative performance score. The lower the number, the more energy efficient the home.

The U.S. Department of Energy has determined that a typical resale home scores 130 on the HERS Index while a standard new home has a rating of 100.

A home with a HERS Index Score of 70 is 30% more energy efficient than a standard new home

A home with a HERS Index Score of 130 is 30% less energy efficient than a standard new home

To calculate a home's HERS Index Score, a certified RESNET HERS Rater does an energy rating on your home and compares the data against a reference home—a designed-model home of the same size and shape as the actual home, so your score is always relative to the size, shape and type of house you live in.

Some of the variables included in a HERS INDEX energy rating are:

- All exterior walls (both above and below grade)
- Floors over unconditioned spaces (like garages or cellars)
- Ceilings and roofs
- Attics, foundations and crawlspaces
- Windows and doors, vents and ductwork
- HVAC systems, water heating system, and your thermostat.

HERS INDEX

Typical IECC 2006 Home
HERS 100 score or higher

Typical IECC 2009 Home
HERS 80-95 score

Anticipated IECC 2012 Home
HERS 70 score or lower

Currently all residential construction in KY (and also Kenton County) must meet International Energy Conservation Code (IECC) 2009 standards or better. This applies to one and two-family dwellings.
Commercial construction must meet 2012 IECC code or better.

Kenton County HERS Rated Units & NAHB Rating Level (since 2012)

Rating Level	HERS Range	Count
Total	-	167
Bronze	(HERS 71-85)	43
Silver	(HERS 61-70)	25
Gold	(HERS 51-60)	99

U.S. GREEN BUILDING COUNCIL
USGBC

LEED, or Leadership in Energy & Environmental Design, is a green building certification program that recognizes best-in-class building strategies and practices. To receive LEED certification, building projects satisfy prerequisites and earn points to achieve different levels of certification. Prerequisites and credits differ for each rating system, and teams choose the best fit for their project.

LEED certified buildings save money and resources and have a positive impact on the health of occupants, while promoting renewable, clean energy.

LEED Rating Systems
Building Design & Construction
Interior Design & Construction
Building Operations & Maintenance
Neighborhood Development
Homes

LEED Credit Categories
Integrative Process
Location & Transportation
Materials & Resources
Water Efficiency
Energy & Atmosphere
Sustainable Sites
Indoor Environmental Quality
Innovation
Regional Priority Credits

KY LEED Certified Projects - LEED Level

Level	Count
Total	176
Certified	36
Silver	48
Gold	86
Platinum	6

KY LEED Registered Projects - Year Registered

Year	Count
2014	51
2013	36
2012	45
2011	45
2010	90
2009	88
2008	49
2007	21
2006	5
2005	3
2004	2
2003	1
2002	2
2001	1

As a first step toward LEED® Green Building Certification, the owner has to register the project with the U.S. Green Building Council. To achieve LEED certification, documentation demonstrating that the project has successfully met the sustainable design and performance criteria set forth within the LEED Green Building Rating System must be submitted, reviewed, and approved by USGBC. LEED® is a registered trademark of the U.S. Green Building Council.

direction 2030
Your Voice. Your Choice.

Plan Goals & Objectives

- C Community Identity
- E Economy
- G Governance
- H Health
- HC Healthy Communities
- M Mobility
- N Natural Systems
- Primary Goal
- Secondary Goal

How Does This Topic Relate to Direction 2030?

HC Encourage a variety of housing types throughout the County to meet the needs of all generations and income levels.

HC Promote all aspects of housing including infill, redevelopment and new development where appropriate.

E Identify opportunities with measured outcomes and implement innovative development practices while ensuring widest market appeal.

N Strive to achieve a balance between development and preservation.

HC Encourage innovative design on sites with constraints based on the presence of natural systems and incentivize the protection of quality open space.

NKYmapLAB

January 2015 Volume 1: Map1

Northern Kentucky mapLAB is a copyrighted, published product of Planning and Development Services of Kenton County. The goal of the initiative is to analyze a wide variety of local data and present them in a more visual format that facilitates understanding by the public and to elected leaders. Suggestions for future analyses are always welcome.

RESNET | HERS Rated Home
Homes built since 2012 that have been rated on the RESNET | HERS Index

LEED REGISTERED or CERTIFIED Project
Projects that have been LEED "Registered" or LEED "Certified" by the USGBC

25.0 EE units / sq. mi.

Energy Efficient (EE) Construction Density Heat Map (Buildings/Sq. Mi.)

0.0 EE units / sq. mile

Featured Data Sources
www.direction2030.org
www.linkgis.org
www.usgbcKentucky.org/
www1.resnet.us/register/

PDS