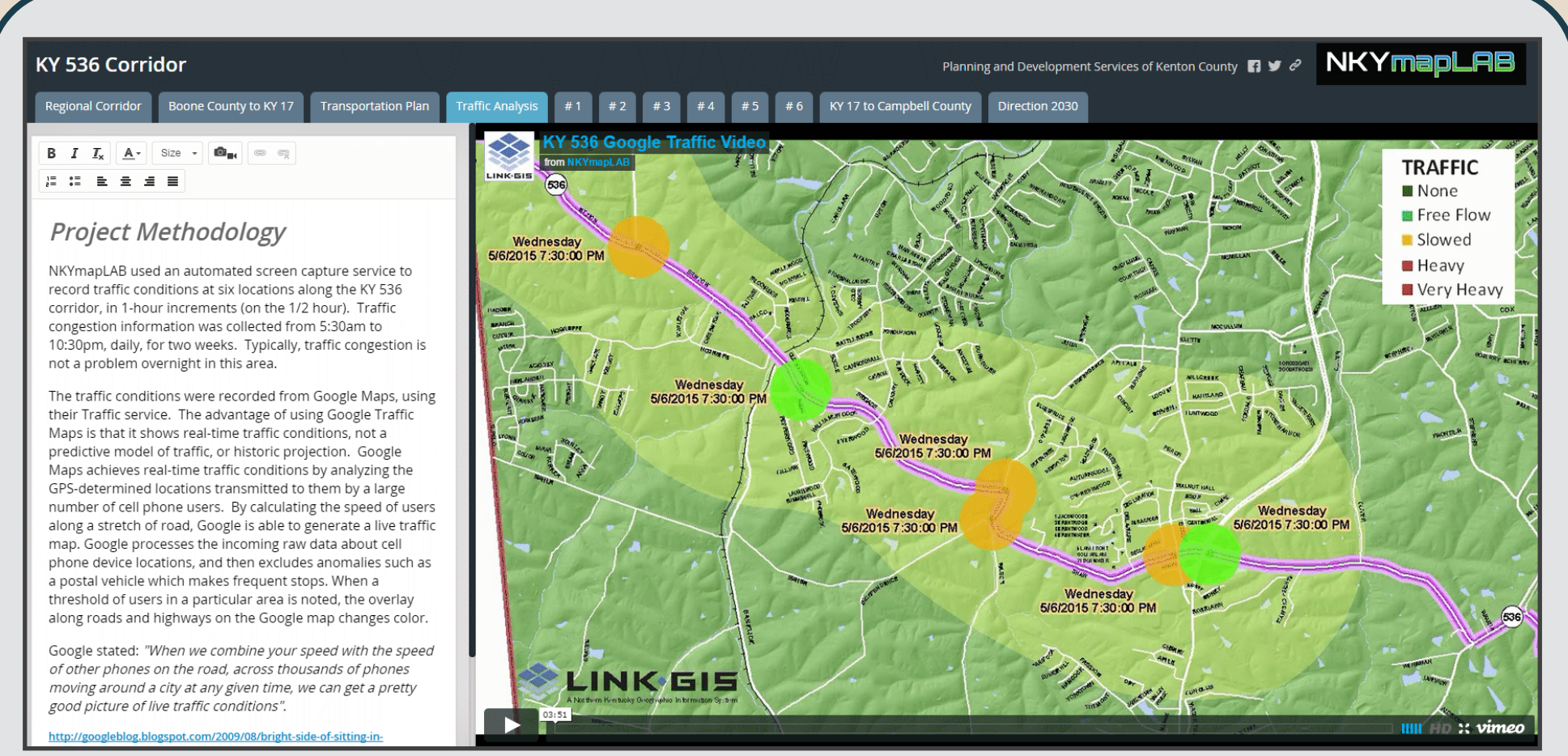


# KY 536 Corridor

## Traffic Patterns



The data portrayed here are part of a more comprehensive GIS analysis of traffic patterns along KY 536. Six separate locations were monitored over a 2-week period as part of this analysis. There is also a 3-minute video that shows hourly traffic flow at each location over the 2-week period, and can be found in an online interactive format at: [linkgis.org](http://linkgis.org)

### Project Methodology

NKYmapLAB used an automated screen capture service to record traffic conditions at six locations along the KY 536 corridor, in 1-hour increments (on the 1/2 hour). Traffic congestion information was collected from 5:30am to 10:30pm, daily, for two weeks. Typically, traffic congestion is not a problem overnight in this area.

The traffic conditions were recorded from Google Maps, using their Traffic service. The advantage of using Google Traffic Maps is that it shows real-time traffic conditions, not a predictive model of traffic, or historic projection. Google Maps achieves real-time traffic conditions by analyzing the GPS-determined locations transmitted to them by a large number of cell phone users. By calculating the speed of users along a stretch of road, Google is able to generate a live traffic map. Google processes the incoming raw data about cell phone device locations, and then excludes anomalies such as a postal vehicle which makes frequent stops. When a threshold of users in a particular area is noted, the overlay along roads and highways on the Google map changes color.

Google states: "When we combine your speed with the speed of other phones on the road, across thousands of phones moving around a city at any given time, we can get a pretty good picture of live traffic conditions".

<http://googleblog.blogspot.com/2009/08/bright-side-of-sitting-in-traffic.html>

### The traffic map colors show the speed of traffic

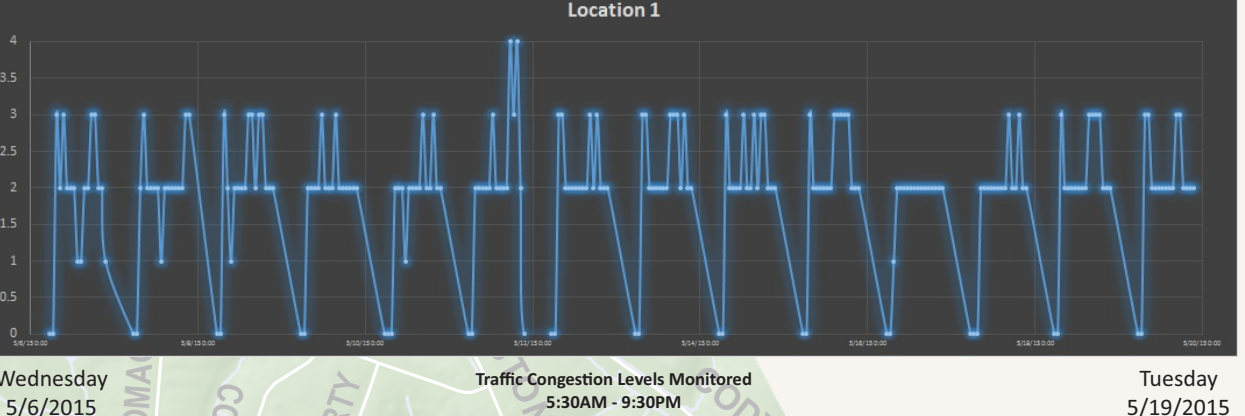
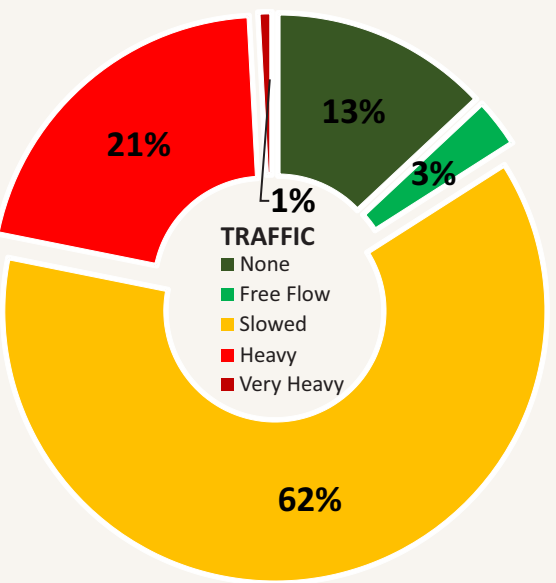
- Green means there are no traffic delays.
- Orange means there's a medium amount of traffic.
- Red means there are traffic delays.
- The more red, the slower the speed of traffic on the road.

Google Official Blog

Insights from Google into our products, technology, and the Google culture

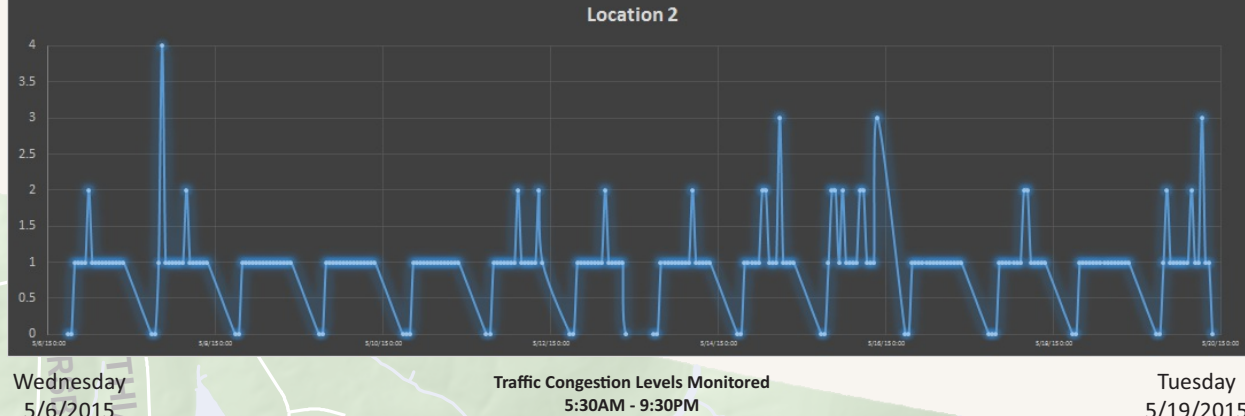
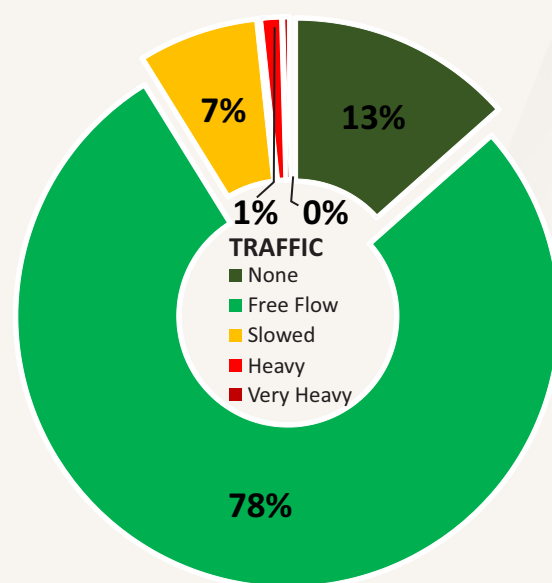
### Location 1

Bristow Rd. (KY 536) & Turkeyfoot Rd. (KY-1303)



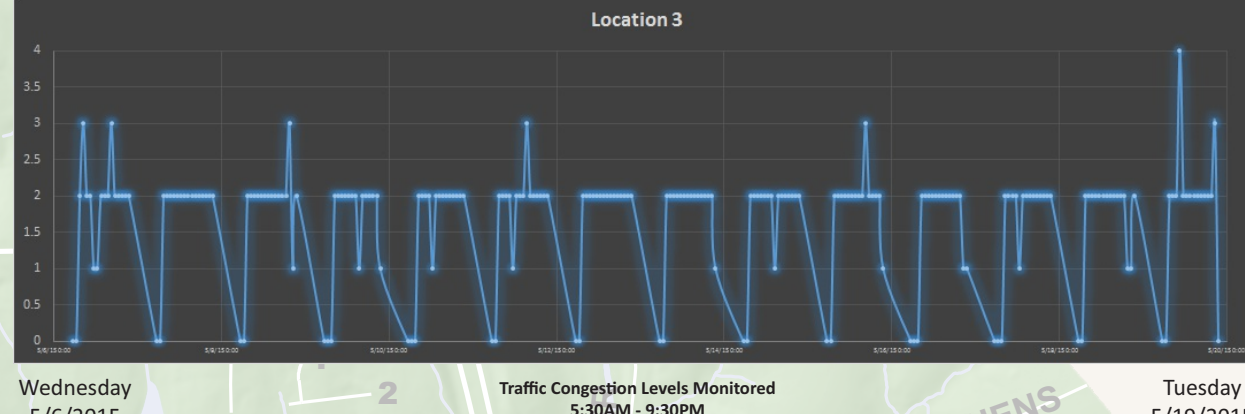
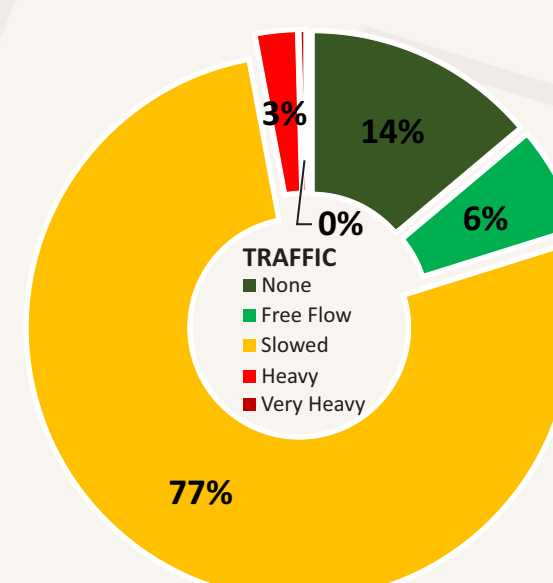
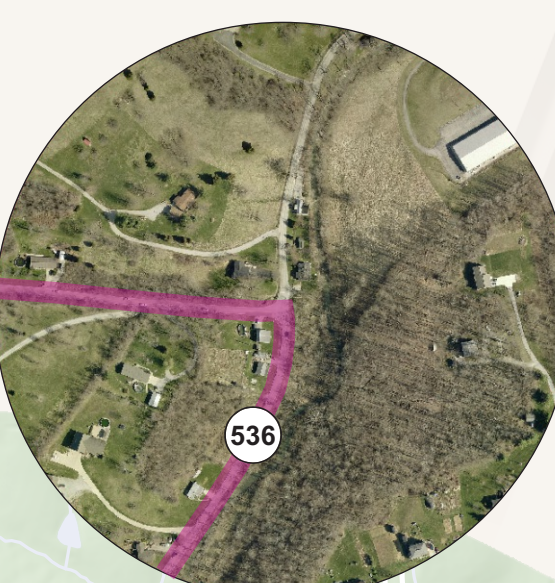
### Location 2

Bristow Rd. (KY 536) & Banklick Rd. (KY 2043)



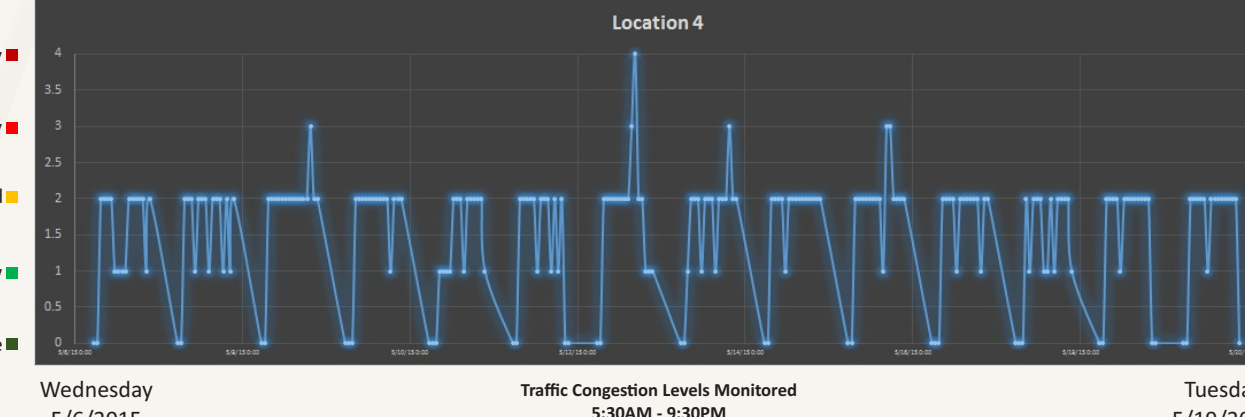
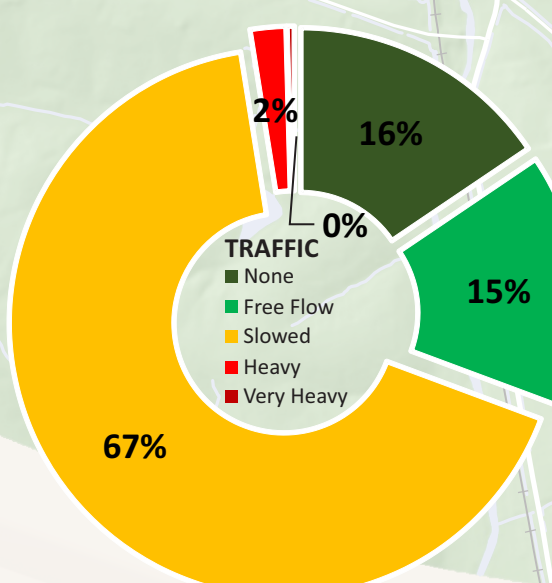
### Location 3

Bristow Rd. (KY 536) & Independence Rd. (North)



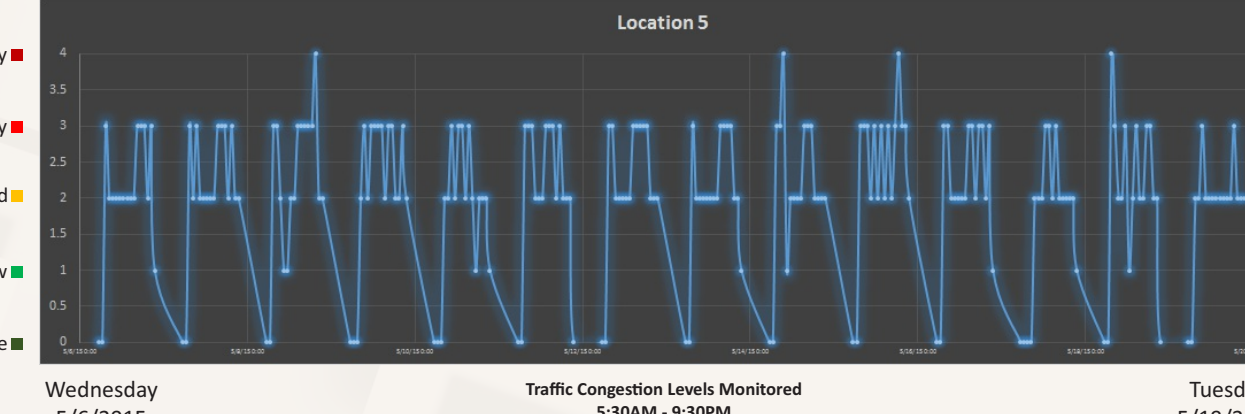
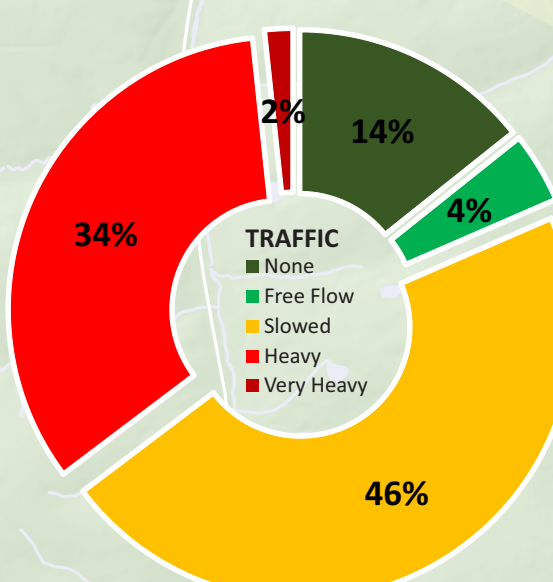
### Location 4

Bristow Rd. (KY 536) & Independence Rd. (South)



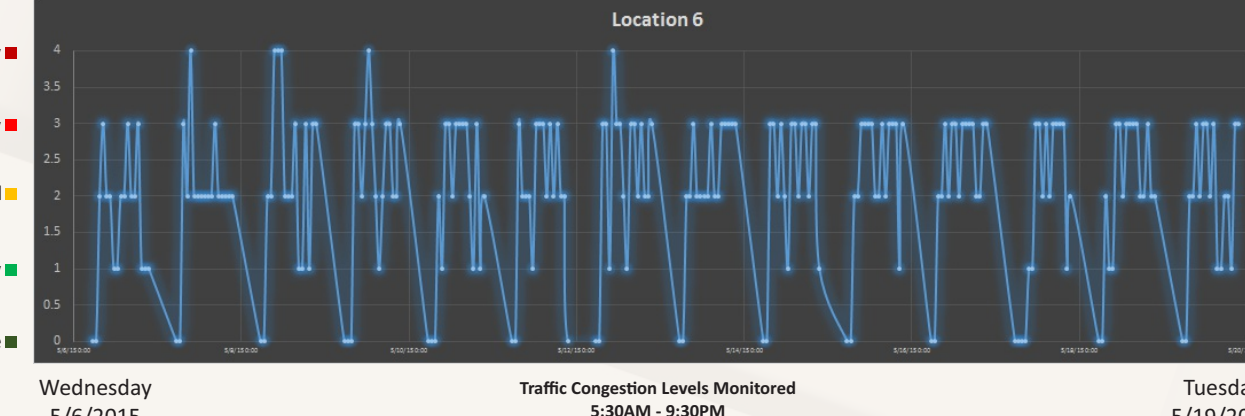
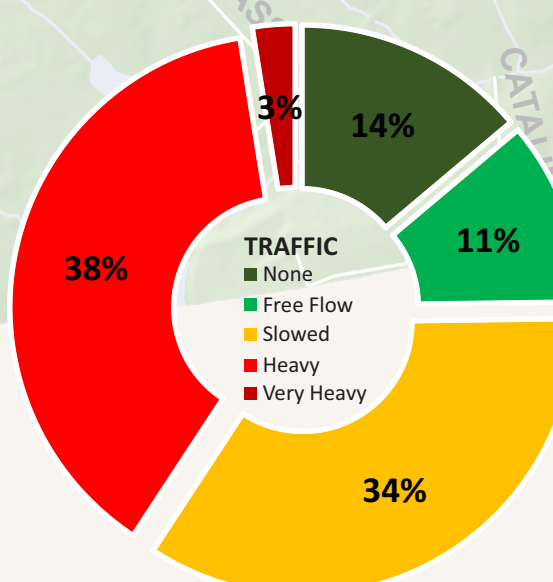
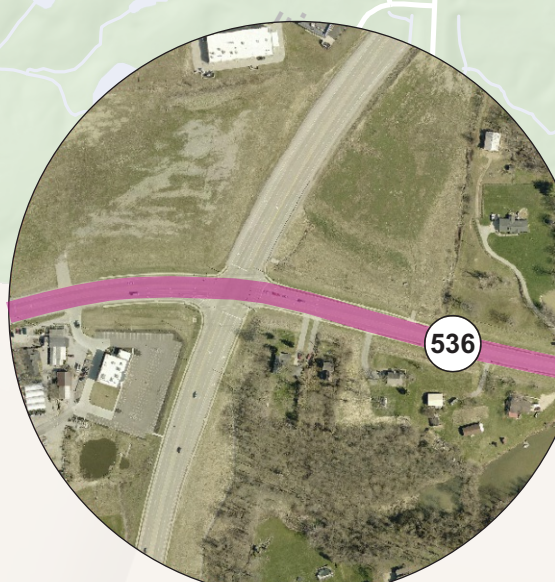
### Location 5

Shaw Rd. (KY 536) & Madison Pike (KY 17) (West)



### Location 6

Shaw Rd. (KY 536) & Madison Pike (KY 17) (East)



## direction 2030

Your Voice. Your Choice.

### Plan Goals & Objectives

- C Community Identity
- H Health
- N Natural Systems
- E Economy
- HC Healthy Communities
- P Primary Goal
- G Governance
- M Mobility
- S Secondary Goal

### How Does This Topic Apply to Direction 2030?

- M** Improve the ability of residents to live a healthy lifestyle.
- HC** Promote increased roadway connectivity between activity nodes to reduce congestion on major thoroughfares.
- H** Increase the convenience and efficiency of using multiple modes of transportation including driving, transit, walking or biking.

### Key Recommendations:

"A major widening of the KY 536 corridor from the county boundary to KY 17 is currently being planned and will provide much needed east/west connectivity to that portion of Kenton County. The roadway has the potential to bring additional residential and economic development opportunities to the City of Independence. It is recommended that the impact and opportunities created by the widening project be studied prior to its completion."

— Direction 2030 Land Use Element

"Improve east/west connectivity that links Boone, Campbell and Kenton counties."

— Direction 2030 Mobility Element

"Kenton County has historically had reliable north to south mobility and has faced challenges when moving east to west connectivity. While KY 536 carries traffic across the county, it is a winding two-lane road fraught with numerous stop signs and necessary turns to avoid topographic challenges in the landscape."

— Direction 2030 Mobility Research Report

## NKYmapLAB

May 2015 Volume 1: Map 5

### Map Features

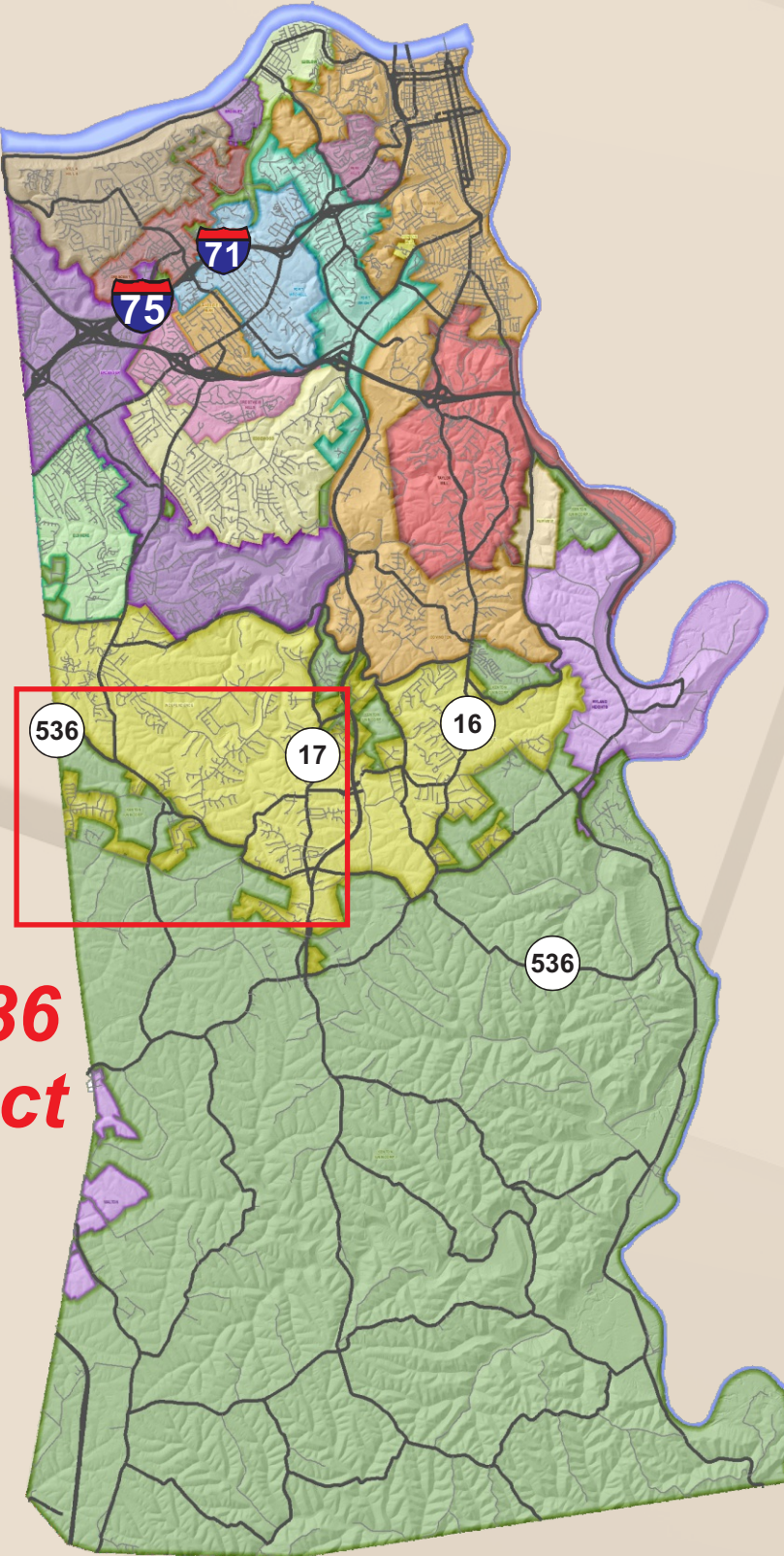
- KY 536 Corridor
- US and State Hwy Roads
- County and Local Roadways
- Traffic Observation Location

### Traffic Flow

- None
- Free Flow
- Slowed
- Heavy
- Very Heavy

### Featured Data Sources

- [www.direction2030.org](http://www.direction2030.org)
- [www.linkgis.org](http://www.linkgis.org)
- [www.google.com/maps](http://www.google.com/maps)
- [www.oki.org/kenton/fullreport](http://www.oki.org/kenton/fullreport)



Kenton County