

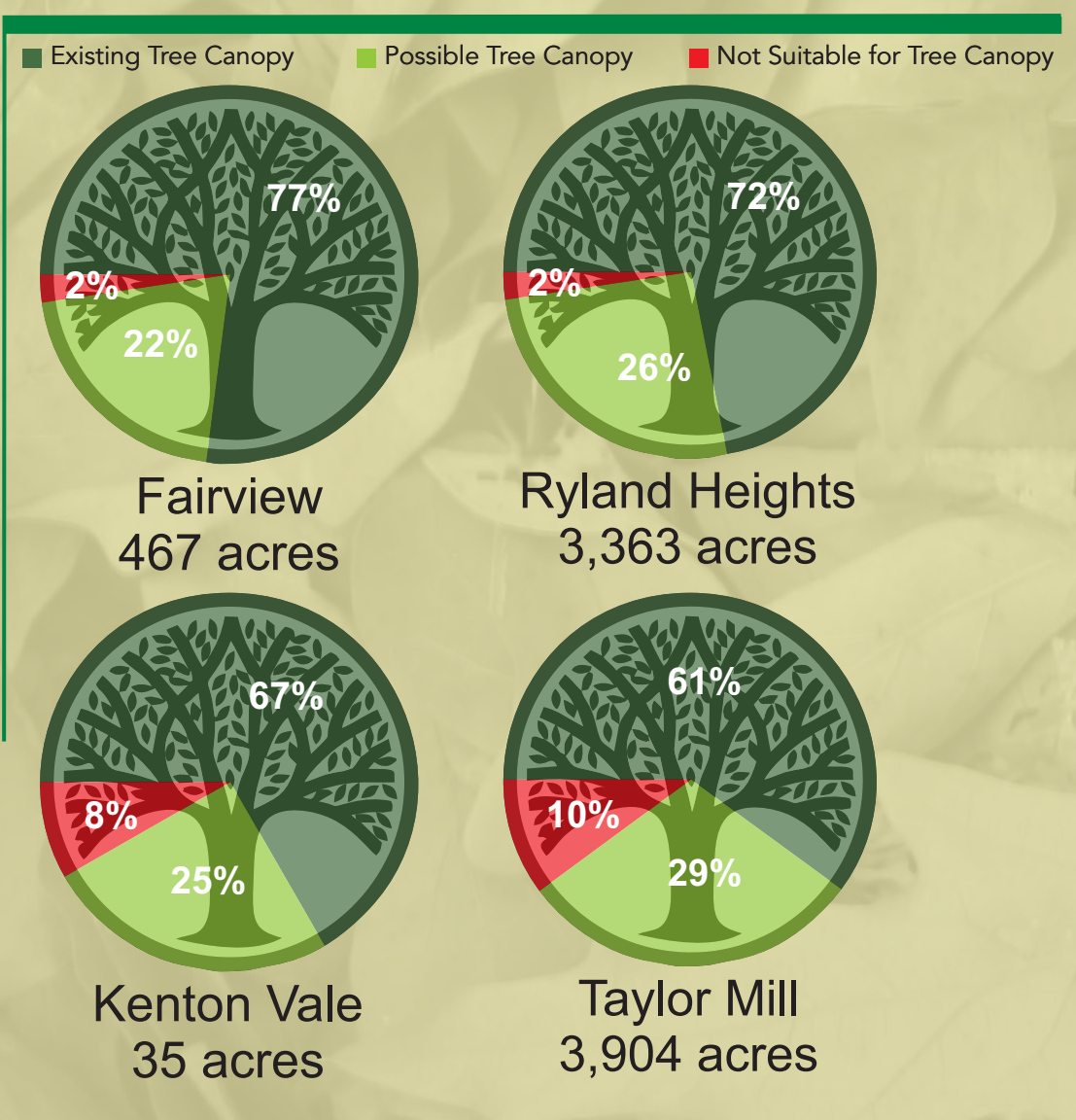
Urban Tree Canopy

in the cities of Kenton County

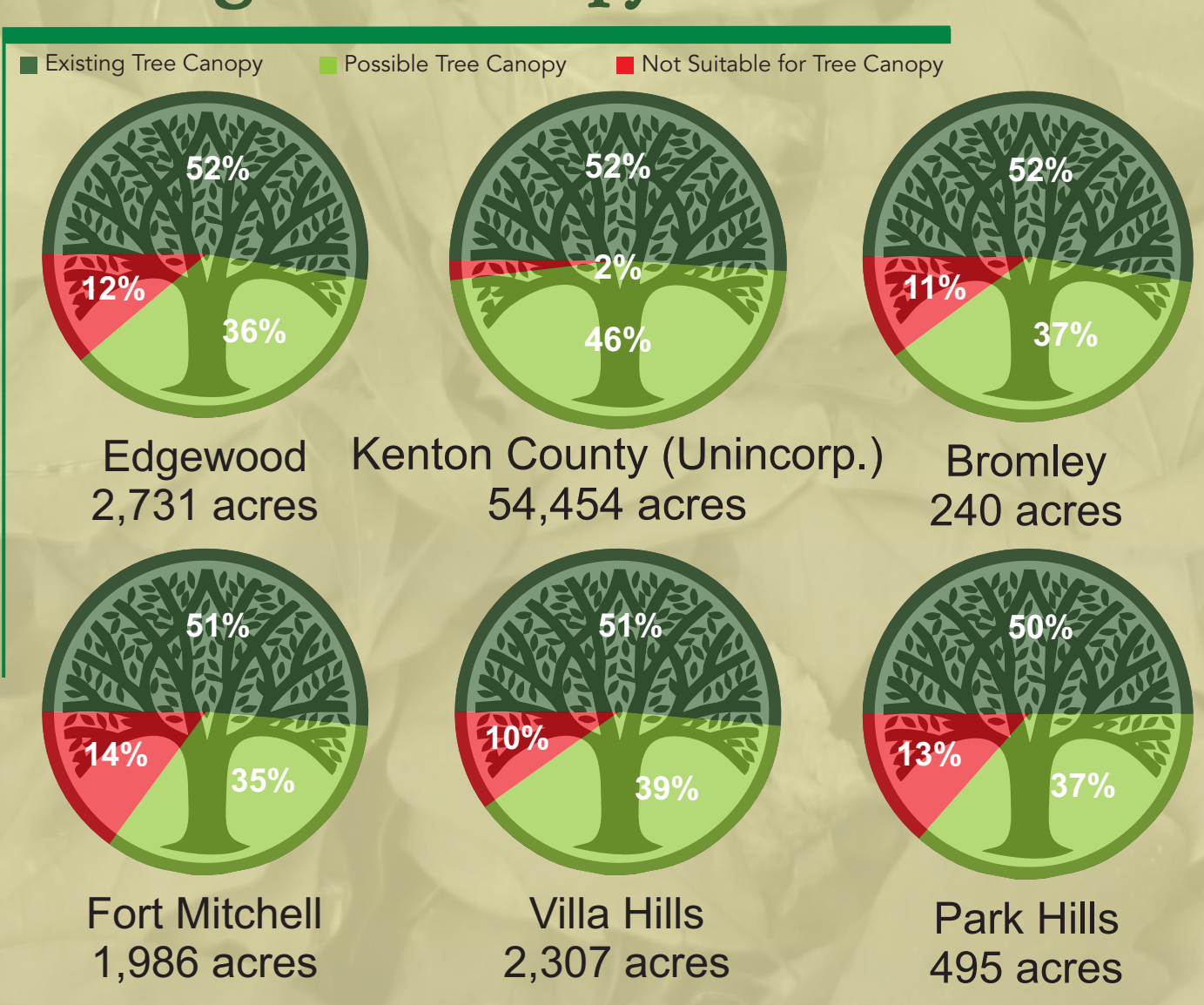
More Trees Means
Cooler Temperatures and
Less Energy

High Coverage = Low Temperature

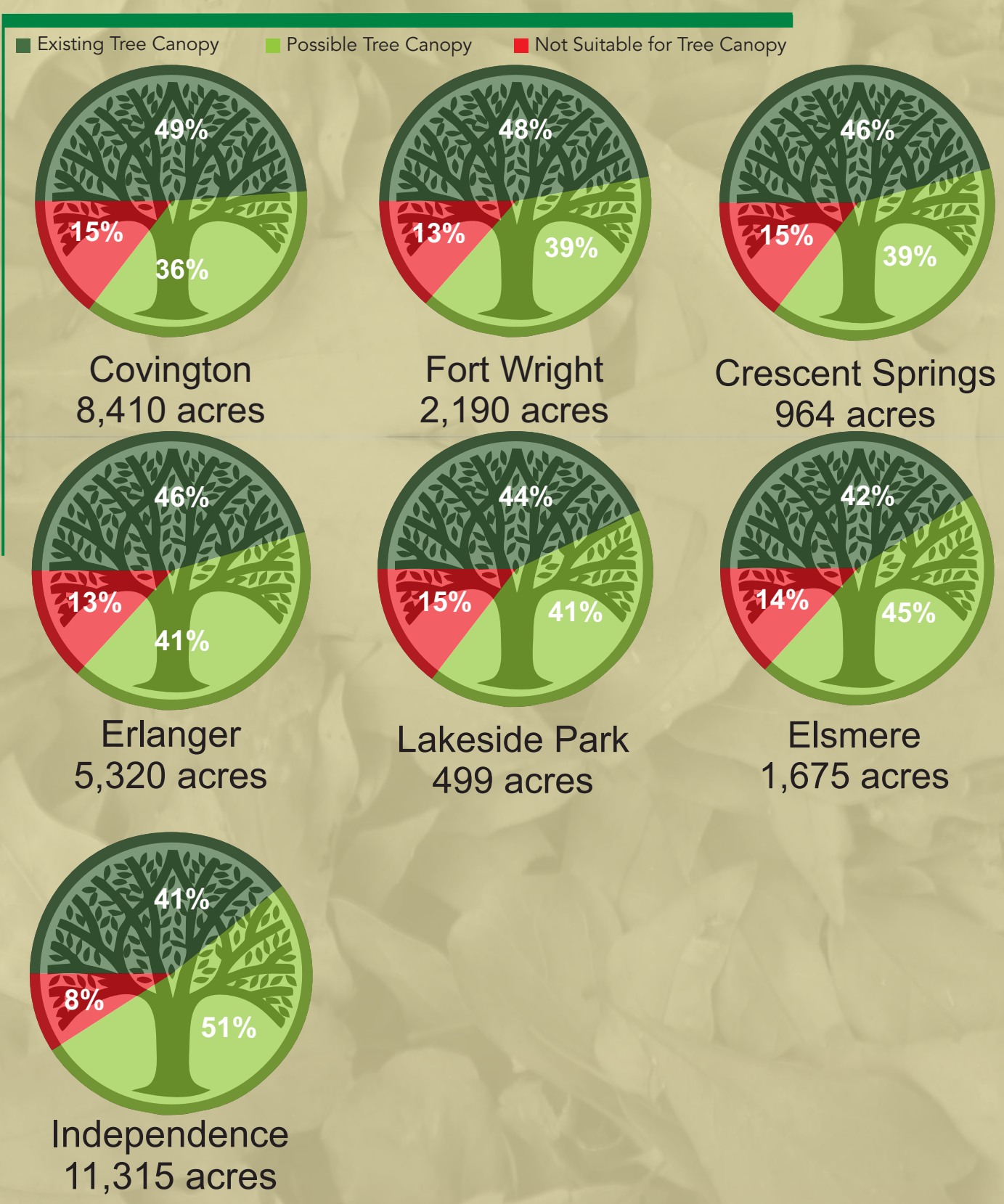
Existing Tree Canopy Greater than 60%



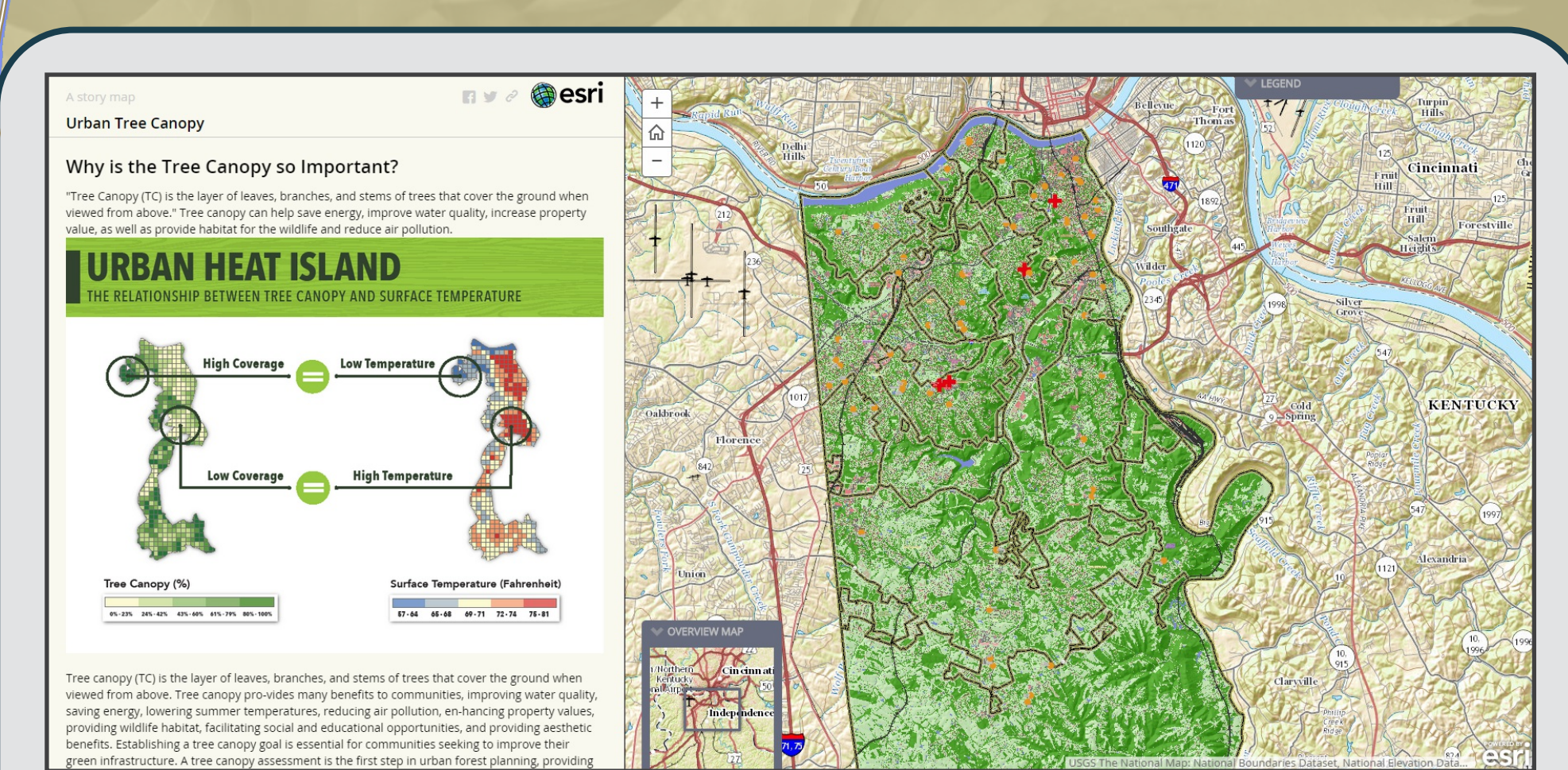
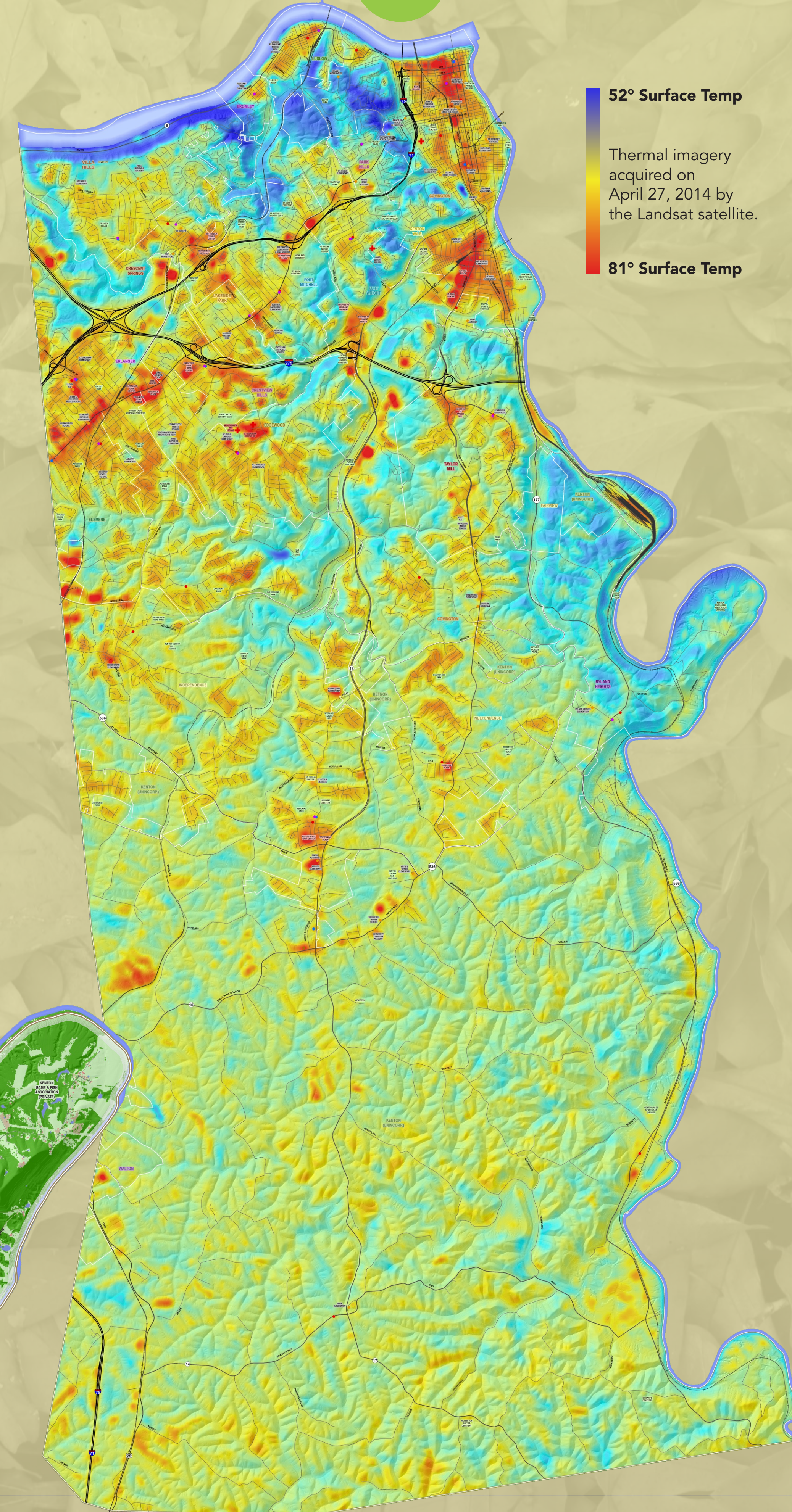
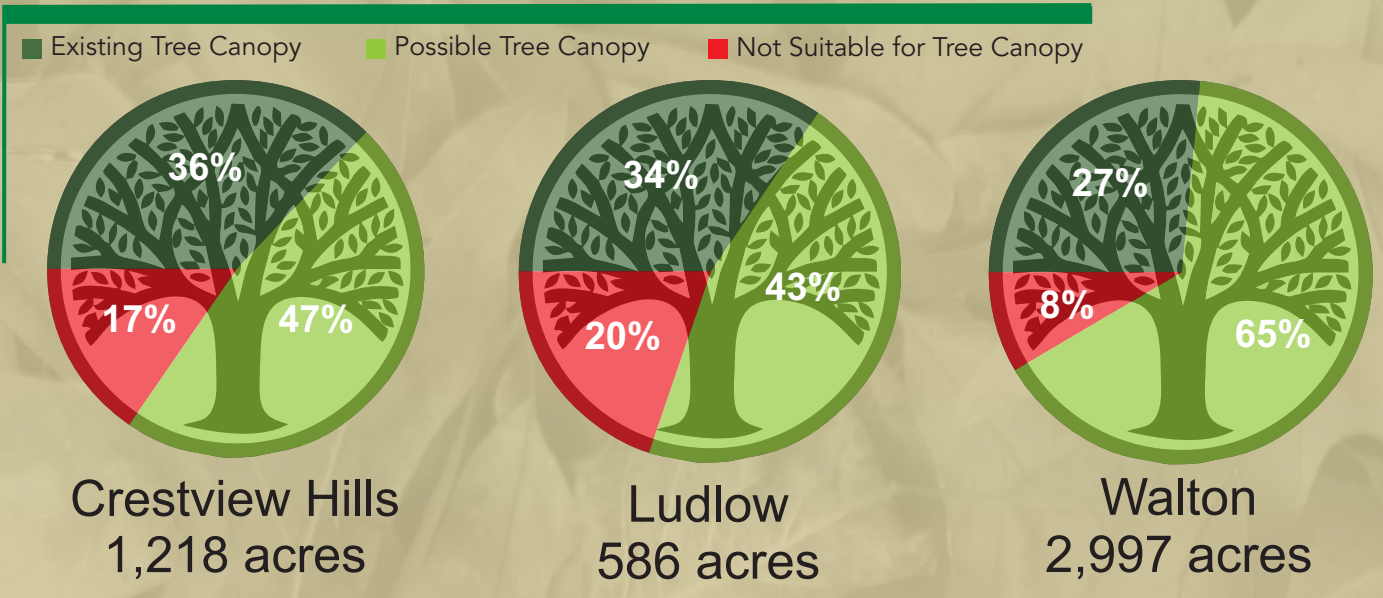
Existing Tree Canopy 50% - 60%



Existing Tree Canopy 40% - 50%



Existing Tree Canopy Less than 40%



The Urban Tree Canopy analysis applied the USDA Forest Service's Tree Canopy Assessment protocols to Kenton County, using 2012 imagery, and 2011/2012 LiDAR. This project was made possible through funding from the Northern Kentucky Urban and Community Forestry Council. The analysis was performed by the SavATree Consulting Group in collaboration with the Spatial Analysis Laboratory at the University of Vermont. More information can be found at: linkgis.org

direction 2030
Your Voice. Your Choice.

Plan Goals & Objectives

C Community Identity	H Health	N Natural Systems
E Economy	HC Healthy Communities	Primary Goal
G Governance	M Mobility	Secondary Goal

How Does This Topic Apply to Direction 2030?

HC Improve the ability of residents to live a healthy lifestyle.

M Encourage the provision of both active and passive recreational opportunities to address the needs of different age groups and interests.

N Promote adequate access to natural systems to encourage outdoor activities for all generations on public property.

M Promote connectivity within and from surrounding neighborhoods to public parks or natural areas to encourage walking and biking.

N Strive to achieve a balance between development and preservation.

HC Encourage innovative design on sites with constraints based on the presence of natural systems and incentivize the protection of quality open space.

Key Recommendations:

"Kenton County is rich in natural resources such as fertile soil, forestland and valuable water resources that provide many essential benefits. The ability to integrate the natural and built environment will be crucial to supporting a safe, healthy and sustainable community."

— Direction 2030 Environment Research

NKYmapLAB

June 2015 Volume 1: Map 4

Northern Kentucky mapLAB is a copyrighted, published product of Planning and Development Services of Kenton County. The goal of this initiative is to develop a wide variety of natural data and present them in a more visual format that facilitates understanding by the public and its elected leaders. Suggestions for future analyses are always welcome.

Tree Canopy	Land Cover Class
Existing Tree Canopy	Tree Canopy
Possible Tree Canopy	Grass / Shrub
Not Suitable for Tree Canopy	Bare Soil
	Water
	Buildings
	Roads / Railroads
	Other Paved Surfaces

Featured Data Sources

www.direction2030.org

www.linkgis.org

www.nkyurbanforestry.org

PDS

"Kenton County is rich in natural resources such as fertile soil, forestland and valuable water resources that provide many essential benefits. The ability to integrate the natural and built environment will be crucial to supporting a safe, healthy and sustainable community."

— Direction 2030 Environment Research Report

