

Parks of Kenton County

Parks of Kenton County

Parks and Recreation Facilities in Kenton County (April 2015)

"In merging nature and culture the most successful cities combine each universal need or message or restoring contact with the cycles of nature, with specific local characteristics."

— Lady Bird Chagall, Chicago Urban Nature: A Guide to the City's Architecture

"The nation believes itself if it treats its natural resources as assets which must turn over to the next generation increased, and not impaired, in value."

— Theodore Roosevelt

The data portrayed here are part of a more comprehensive GIS analysis of parks in Kenton County. Drive-time and walk-time are illustrated here. Total acreage of parks (by municipality), and park amenities are included in an online interactive format at: linkgis.org

Parks of Kenton County

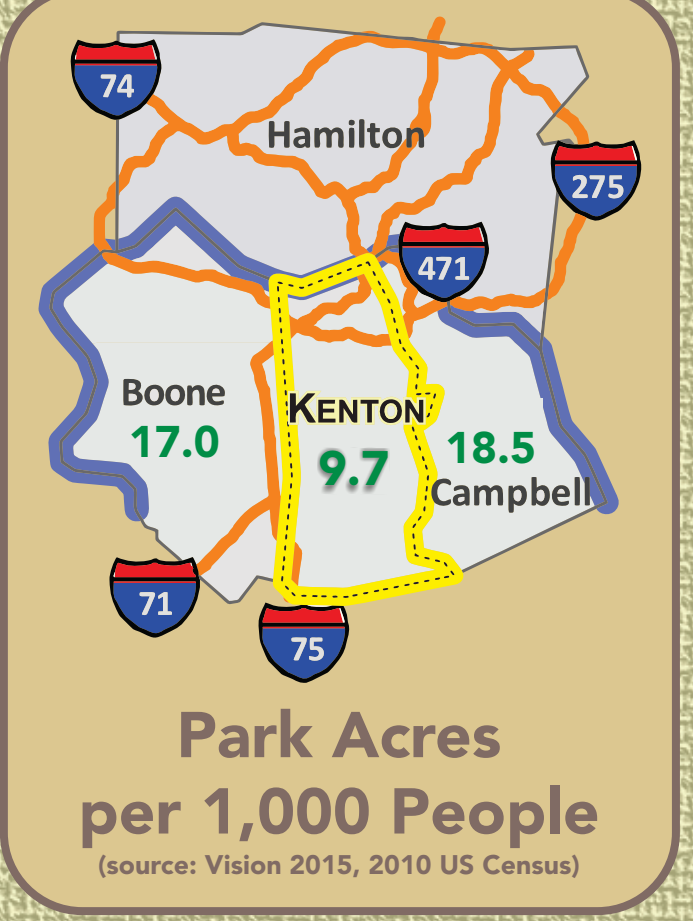
Middleton-Mills Park
Covington
3415 Mills Road

Featured Park Amenities

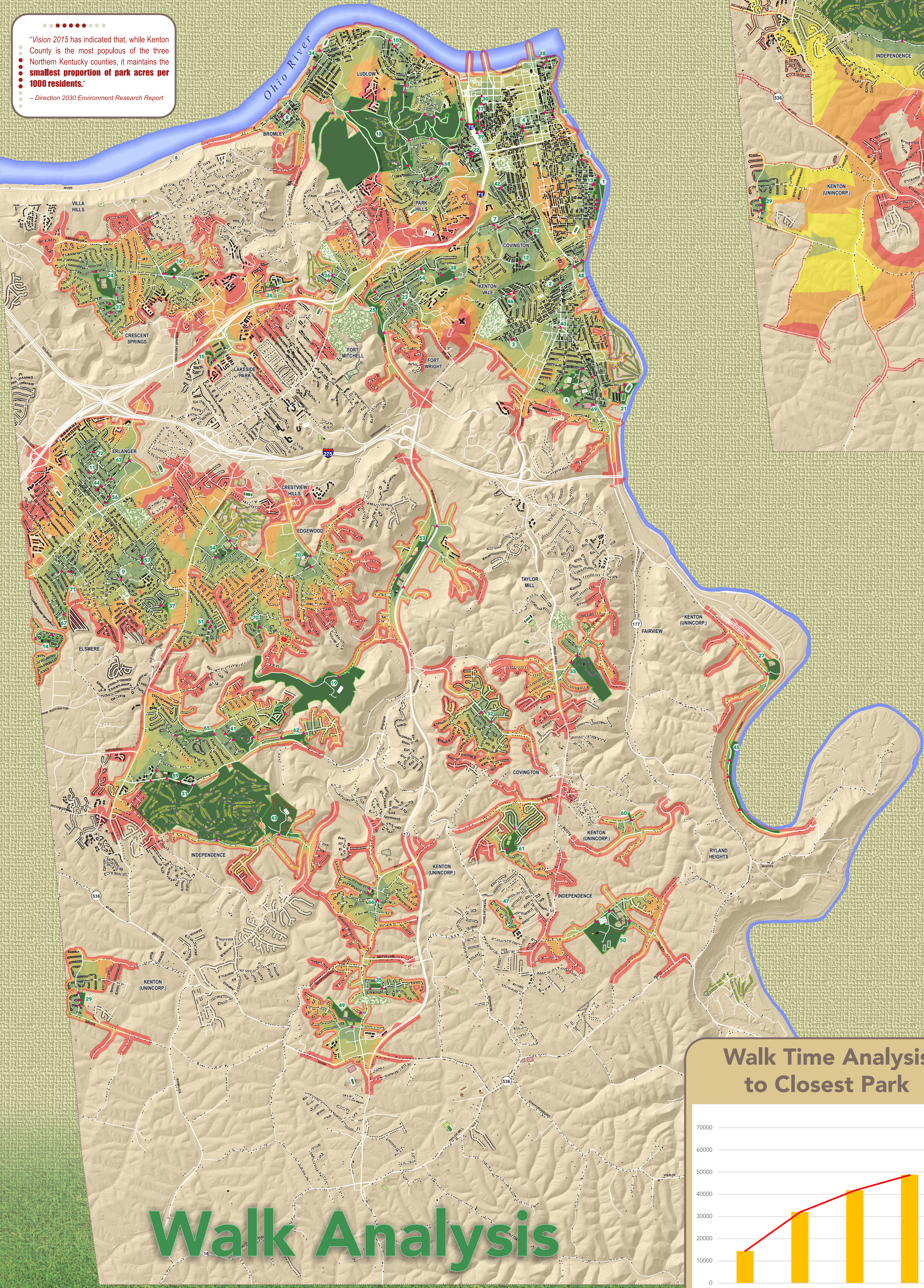
- Trails
- Playground
- Picnic Area
- Baseball Field
- Soccer Field
- Horse Shoes

"Vision 2030 has indicated that, while Kenton County is the most populous of the three Northern Kentucky counties, it maintains the **smallest proportion of park acres per 1,000 residents.**"

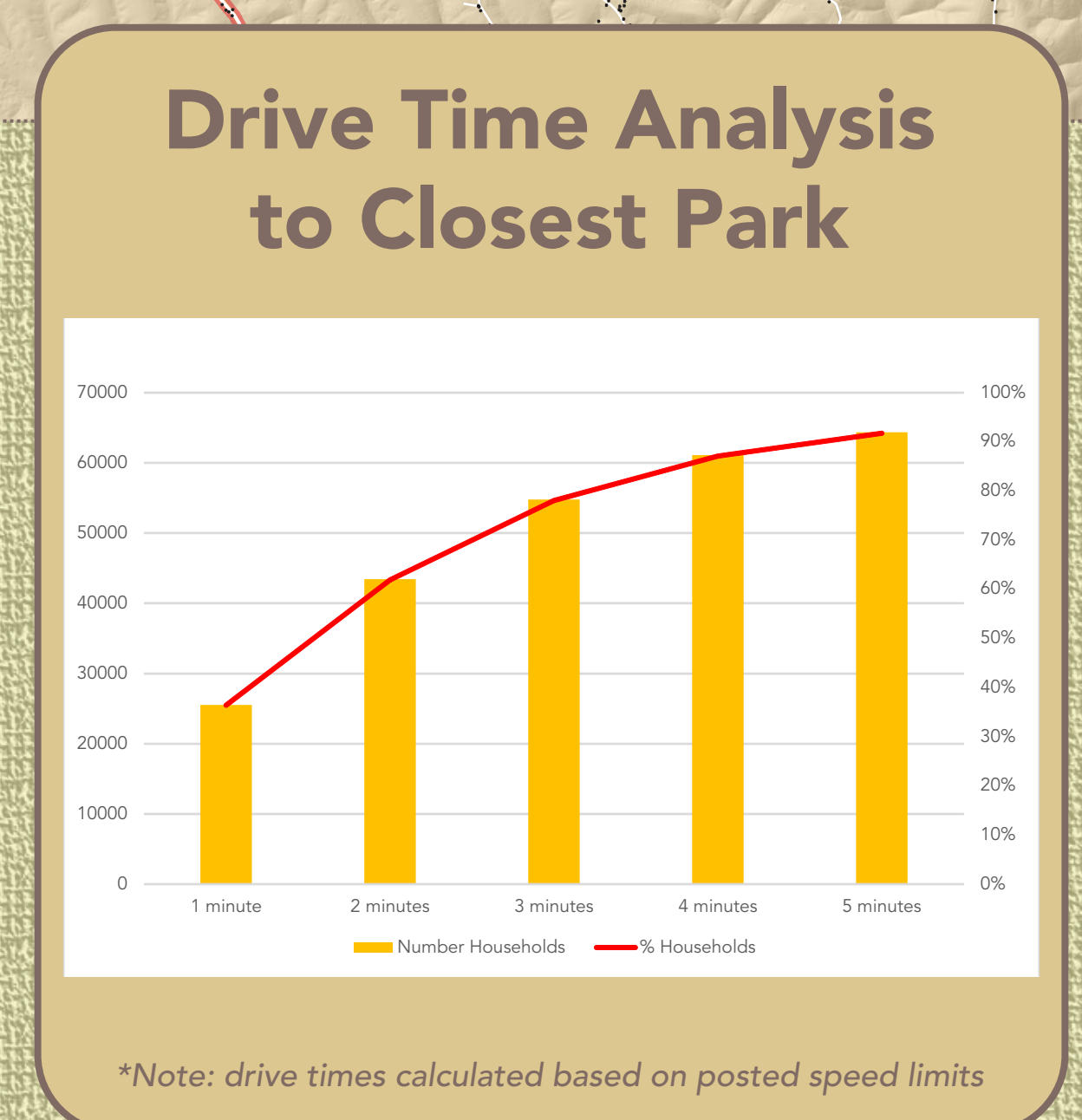
— Direction 2030 Environment Research Report



- ### Park Index (Public Parks)
- | | |
|---|---|
| 1) 19th Street Park | 36) Iris Road Park |
| 2) W30th & Decoursey Tot Lot | 37) Jacqueline Drive Park |
| 3) 35TH Street Tot Lot | 38) James Ramage Civil War Museum Park |
| 4) Annie Hargraves Park | 39) Ken Shields Park |
| 5) Austinburg Neighbor Park | 40) Korean War Memorial |
| 6) Bill Cappel Youth Sports Complex | 41) Lakemont Park |
| 7) Bob Hinzman Memorial Field | 42) Lance CPL Sims Memorial Tot Lot |
| 8) Bromley Park | 43) Lincoln Ridge Park |
| 9) Capitol Park | 44) Locust Park |
| 10) Caples/Jackson Park | 45) Locust Pike Park |
| 11) Center Street Park | 46) Madison & Ashland Playground |
| 12) City Heights Playlot | 47) Marion Schadler Park |
| 13) Clayton Meyer Playlot | 48) Meinken Field |
| 14) Covered Bridge Park | 49) Memorial Park |
| 15) Crescent Park | 50) Middleton-Mills Road Park |
| 16) Crescent Springs Community Park | 51) Misty Creek Park |
| 17) Dalton Street Tot Lot | 52) Peasallburg Little Peoples Playland |
| 18) Park Dr/Devou Park | 53) Pioneer Park/ Paw Park |
| 19) Doe Run Lake | 54) Presidents Park |
| 20) Edgewood Freedom Park | 55) Pride Park |
| 21) Eva Farris Complex (Formerly Rosedale park) | 56) Railroad Park Museum |
| 22) Father Hanes Park | 57) Rainbow Park |
| 23) Fort Tot | 58) Randolph Park and Garden |
| 24) Franzan Fields | 59) Richardson Road Park |
| 25) Ft.Wright Nature Center | 60) Saylor Woods Park |
| 26) General Ormsby Mitchel Park | 61) Shadybrook Park |
| 27) George Bowman Park | 62) Sherbourne Park |
| 28) George Rogers Clark Park and Gardens | 63) Silverlake Park |
| 29) Glenhurst Park | 64) Soccer Field |
| 30) Goebel Park | 65) Spring Valley Park |
| 31) Golf Course | 66) Sterling Staggs Park |
| 32) Hands Pike Park | 67) Tonnill Park |
| 33) Harry Rigney Park | 68) Trolley Park |
| 34) Hollingsworth Field /Lemker Field | 69) Victory Ave. Covington Field |
| 35) Independence Park | 70) Victory Park |
| | 71) Woodside Park |
| | 72) Woodward Playlot |



Drive Analysis



NKYmapLAB

April 2015 Volume 1: Map 4

Northern Kentucky mapLAB is a copyrighted, published product of Planning and Development Services of Kenton County. The goal of the initiative is to analyze and present data in a more visual format that facilitates understanding by the public and its elected leaders. Suggestions for future analyses are always welcome.

Analysis (Walk to a Park)

- 5 minutes
- 10 minutes
- 15 minutes
- 20 minutes

Analysis (Drive to a Park)

- 1 minute
- 2 minutes
- 3 minutes
- 4 minutes
- 5 minutes

Map Features

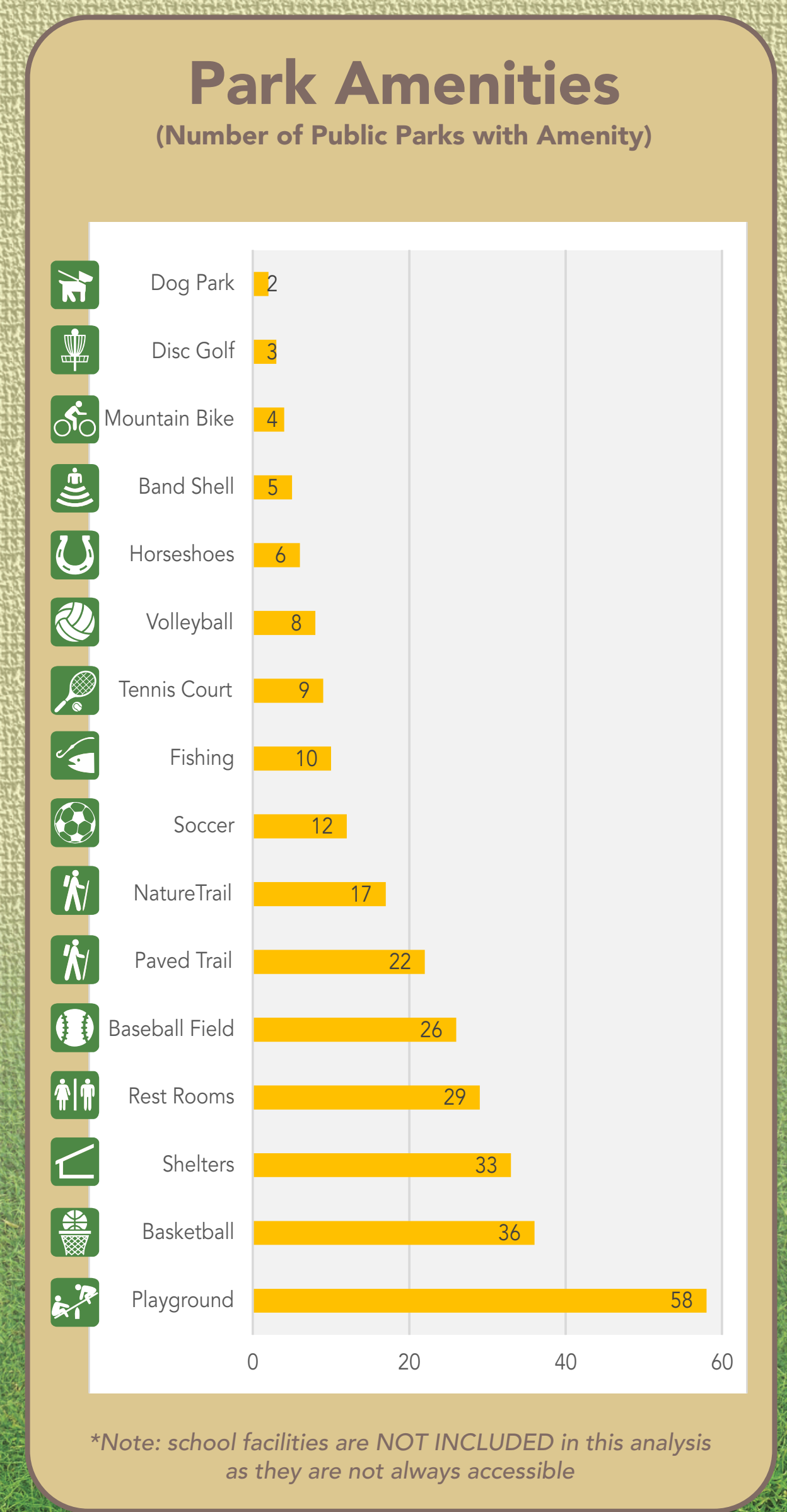
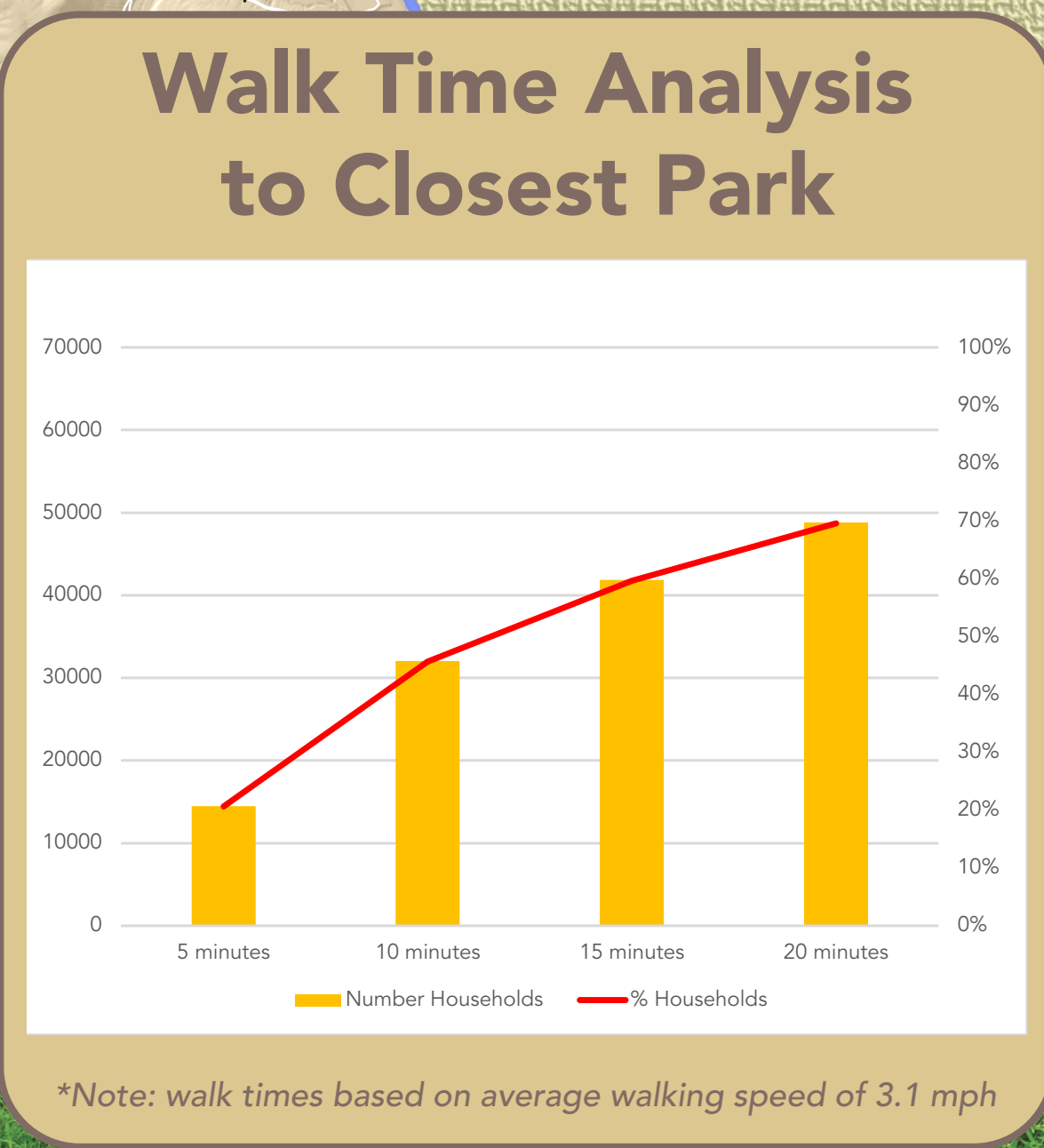
- Parks Access Point
- Residential Household
- Public Parks
- US and State Hwy Roads
- County and Local Roadways

Featured Data Sources

- www.direction2030.org
- www.linkgis.org
- www.covingtonky.gov/
- www.cityofindependence.org/

PDS

Walk Analysis



direction 2030
Your Voice. Your Choice.

Plan Goals & Objectives

- C Community Identity
- H Health
- N Natural Systems
- E Economy
- HC Healthy Communities
- P Primary Goal
- G Governance
- M Mobility
- S Secondary Goal

How Does This Topic Apply to Direction 2030?

- HC** Improve the ability of residents to live a healthy lifestyle.
- M** Encourage the provision of both active and passive recreational opportunities to address the needs of different age groups and interests.
- N** Promote adequate access to natural systems to encourage outdoor activities for all generations on public property.
- M** Promote connectivity within and from surrounding neighborhoods to public parks or natural areas to encourage walking and biking.
- N,E** Strive to achieve a balance between development and preservation.
- E** Explore the viability of a regional park system as a tool to attract talent and jobs into the community.

Key Recommendations:

- "Assess the feasibility of a county-wide park system as it relates to economic competitiveness"
- "Explore opportunities to link existing open space, parks, and recreation areas and investigate opportunities to expand the system within each of the four subareas of the county"