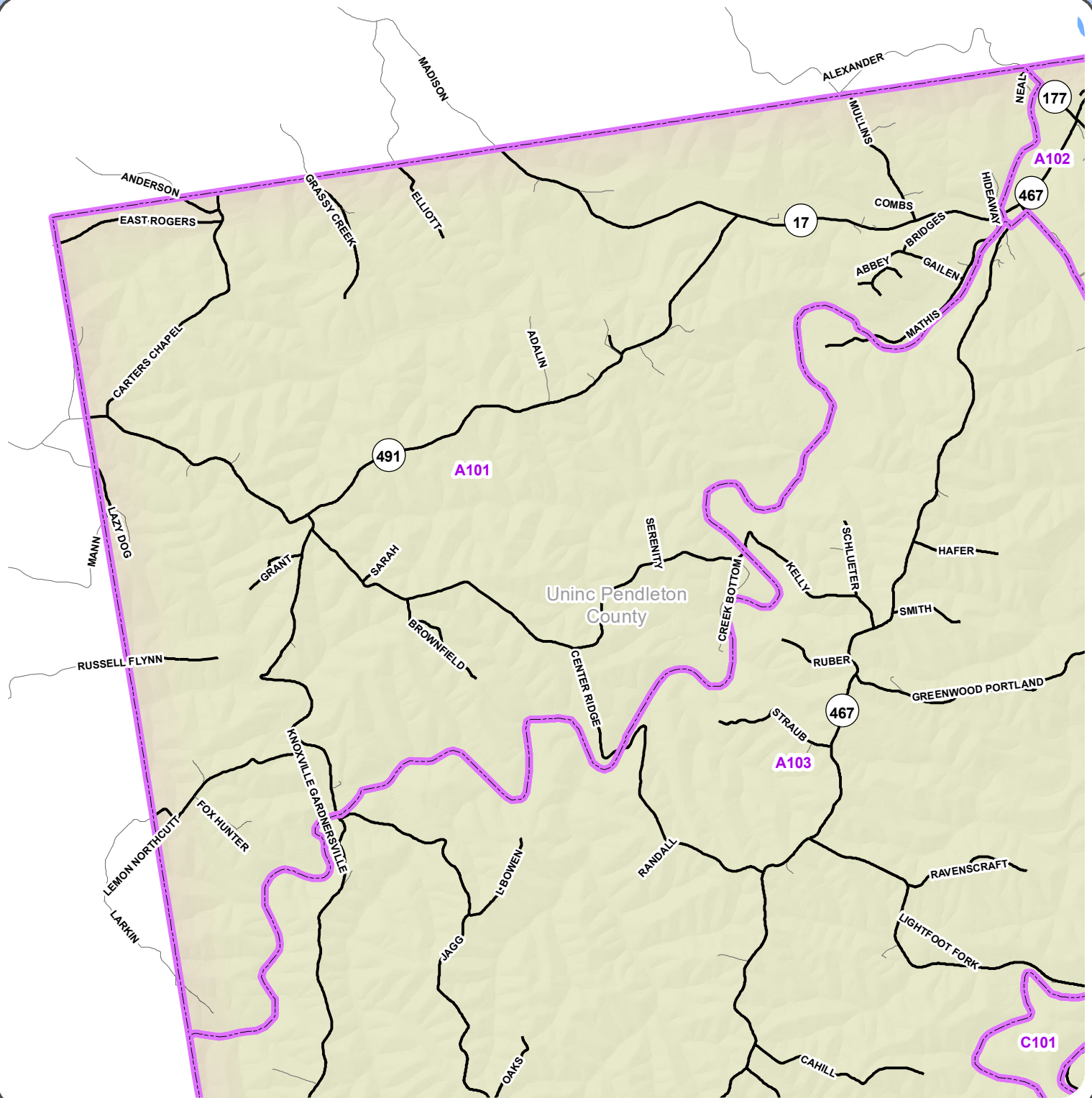




A101



Boundaries

Precinct

County

Butler

Falmouth

Uninc Pendleton County

Pendleton Centerlines

ROAD_CLASS

State Park Road; County and Local Roads

Primary Road; Highway

Pendleton County Precincts

1:51,000

0 2,000 4,000 Feet



2332 Royal Drive
Fort Mitchell, KY 41017
859.331.8980
Office hours M-F 8-5
www.linkgis.org

Prepared by LINK-GIS for the
Pendleton County Clerk's Office
859-392-1600

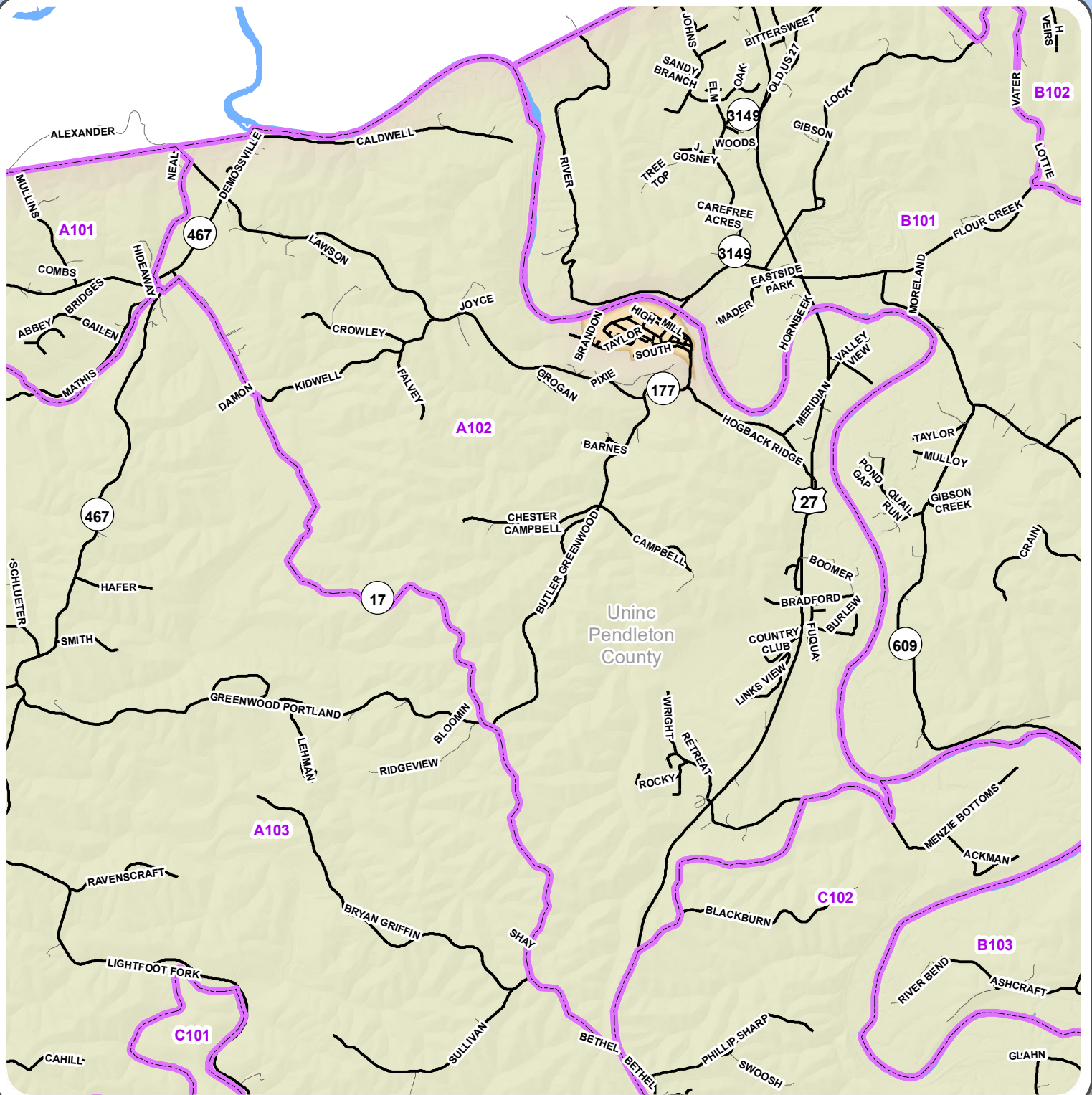
Date: 12/9/2021



These GIS data are deemed reliable and every effort has been made to ensure their accuracy. They are, however, provided "as is" without warranty of correctness, timeliness, reliability, or completeness. Map elements do not represent a legal survey of land. Use of these data for any purpose should be with an acknowledgement of their limitations, including the fact that they are dynamic in nature and in a constant state of maintenance. Field investigation may be necessary.



A102



Boundaries

Precinct

County

Butler

Falmouth

Uninc Pendleton County

Pendleton Centerlines

ROAD_CLASS

State Park Road; County and Local Roads

Primary Road; Highway

Pendleton County Precincts

1:56,000

0 2,000 4,000 Feet



2332 Royal Drive
Fort Mitchell, KY 41017
859.331.8980
Office hours M-F 8-5
www.linkgis.org

Prepared by LINK-GIS for the
Pendleton County Clerk's Office
859-392-1600

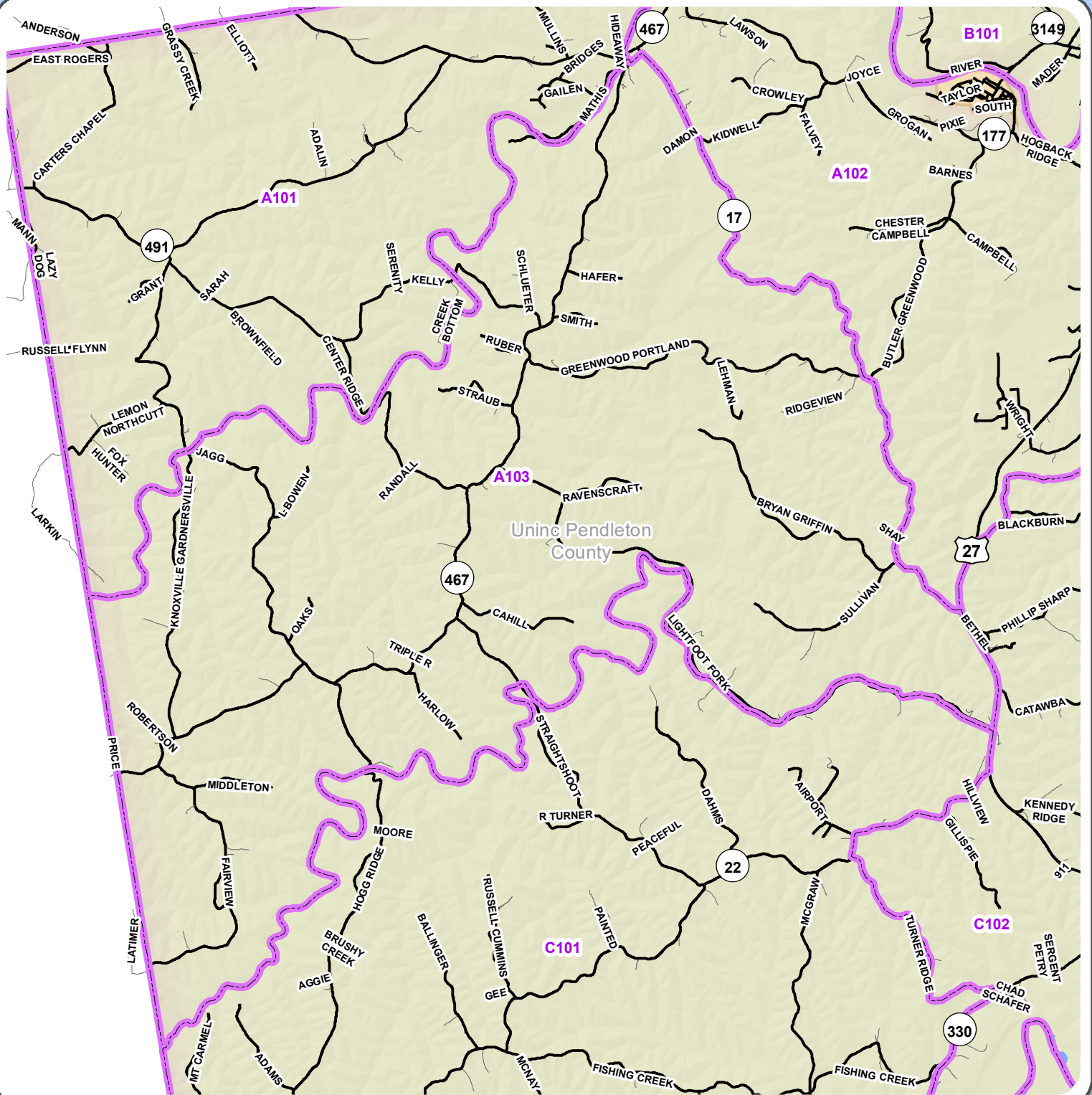
Date: 12/9/2021



These GIS data are deemed reliable and every effort has been made to ensure their accuracy. They are, however, provided "as is" without warranty of correctness, timeliness, reliability, or completeness. Map elements do not represent a legal survey of land. Use of these data for any purpose should be with an acknowledgement of their limitations, including the fact that they are dynamic in nature and in a constant state of maintenance. Field investigation may be necessary.



A103



Boundaries

Precinct

County

Butler

Falmouth

Uninc Pendleton County

Pendleton Centerlines

ROAD_CLASS

State Park Road; County and Local Roads

Primary Road; Highway

Pendleton County Precincts

1:77,000

0 2,000 4,000 Feet



2332 Royal Drive
Fort Mitchell, KY 41017
859.331.8980
Office hours M-F 8-5
www.linkgis.org

Prepared by LINK-GIS for the
Pendleton County Clerk's Office
859-392-1600

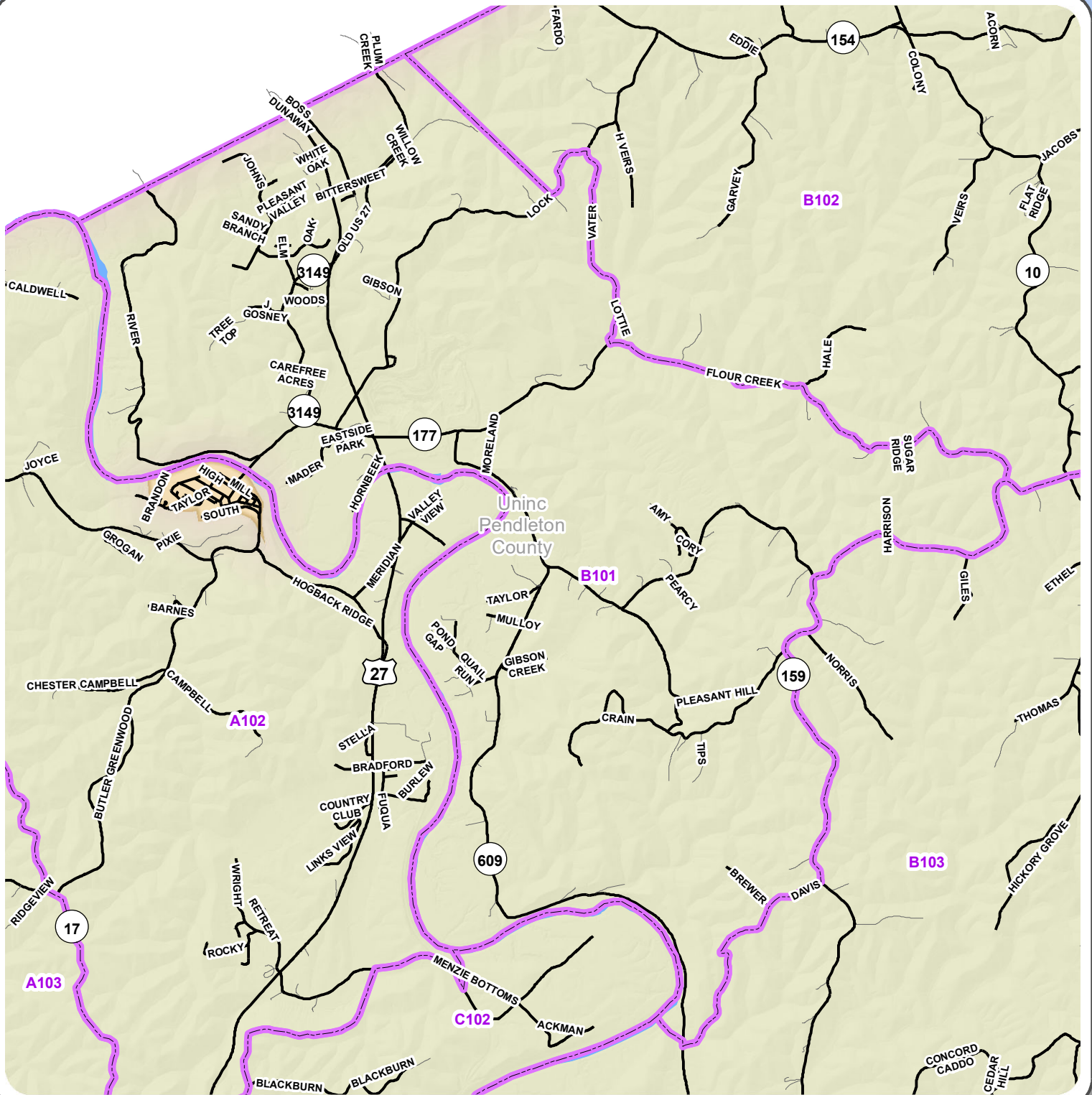
Date: 12/9/2021



These GIS data are deemed reliable and every effort has been made to ensure their accuracy. They are, however, provided "as is" without warranty of correctness, timeliness, reliability, or completeness. Map elements do not represent a legal survey of land. Use of these data for any purpose should be with an acknowledgement of their limitations, including the fact that they are dynamic in nature and in a constant state of maintenance. Field investigation may be necessary.



B101



Boundaries

Precinct

County

Butler

Falmouth

Uninc Pendleton County

Pendleton Centerlines

ROAD_CLASS

State Park Road; County and Local Roads

Primary Road; Highway

Pendleton County Precincts

1:55,000

0 2,000 4,000 Feet



2332 Royal Drive
Fort Mitchell, KY 41017
859.331.8980
Office hours M-F 8-5
www.linkgis.org

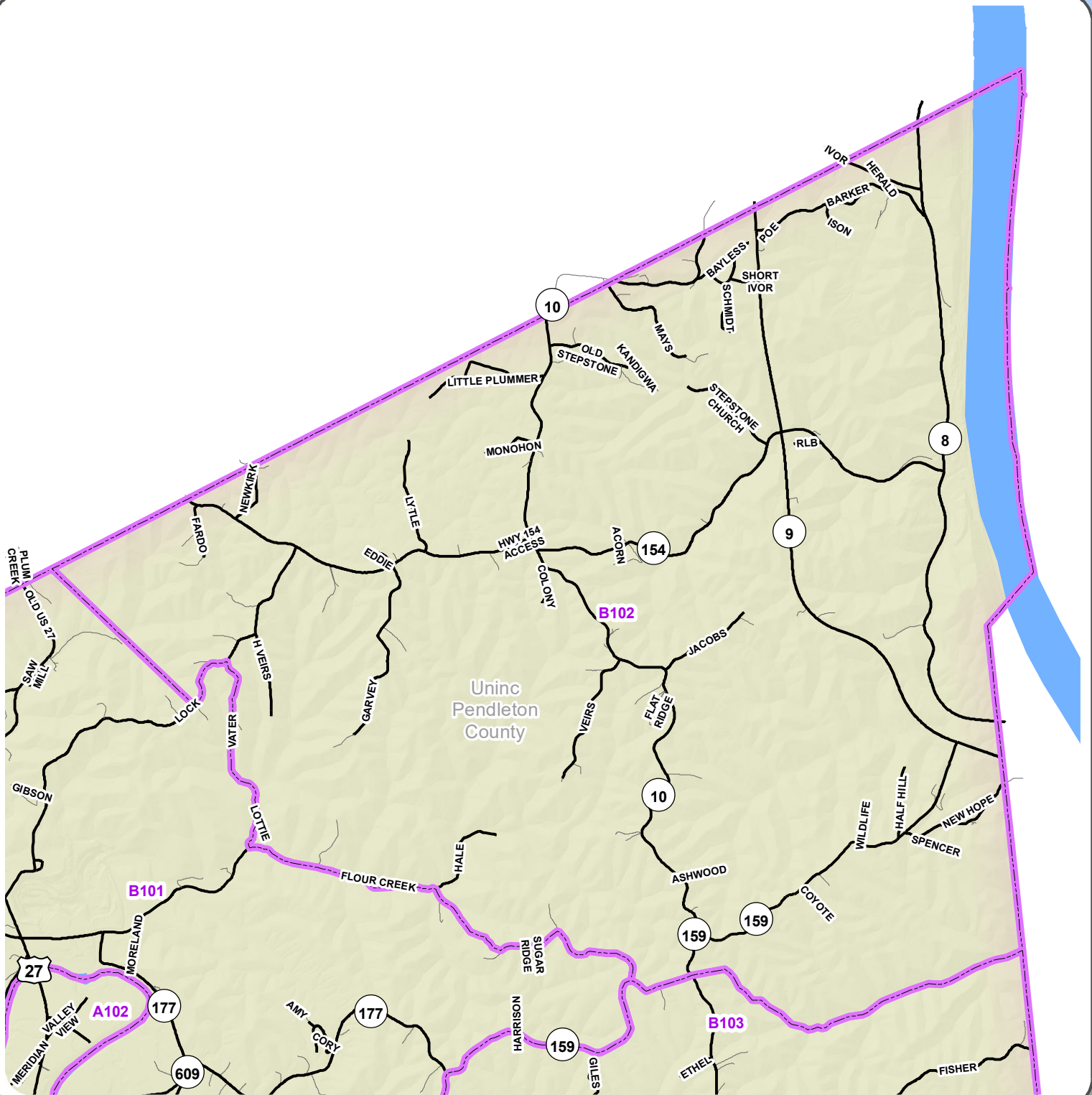
Prepared by LINK-GIS for the
Pendleton County Clerk's Office
859-392-1600

Date: 12/9/2021

These GIS data are deemed reliable and every effort has been made to ensure their accuracy. They are, however, provided "as is" without warranty of correctness, timeliness, reliability, or completeness. Map elements do not represent a legal survey of land. Use of these data for any purpose should be with an acknowledgement of their limitations, including the fact that they are dynamic in nature and in a constant state of maintenance. Field investigation may be necessary.



B102



Boundaries

Precinct

County

Butler

Falmouth

Uninc Pendleton County

Pendleton Centerlines

ROAD_CLASS

State Park Road; County and Local Roads

Primary Road; Highway

Pendleton County Precincts

1:57,000

0 2,000 4,000 Feet



2332 Royal Drive
Fort Mitchell, KY 41017
859.331.8980
Office hours M-F 8-5
www.linkgis.org

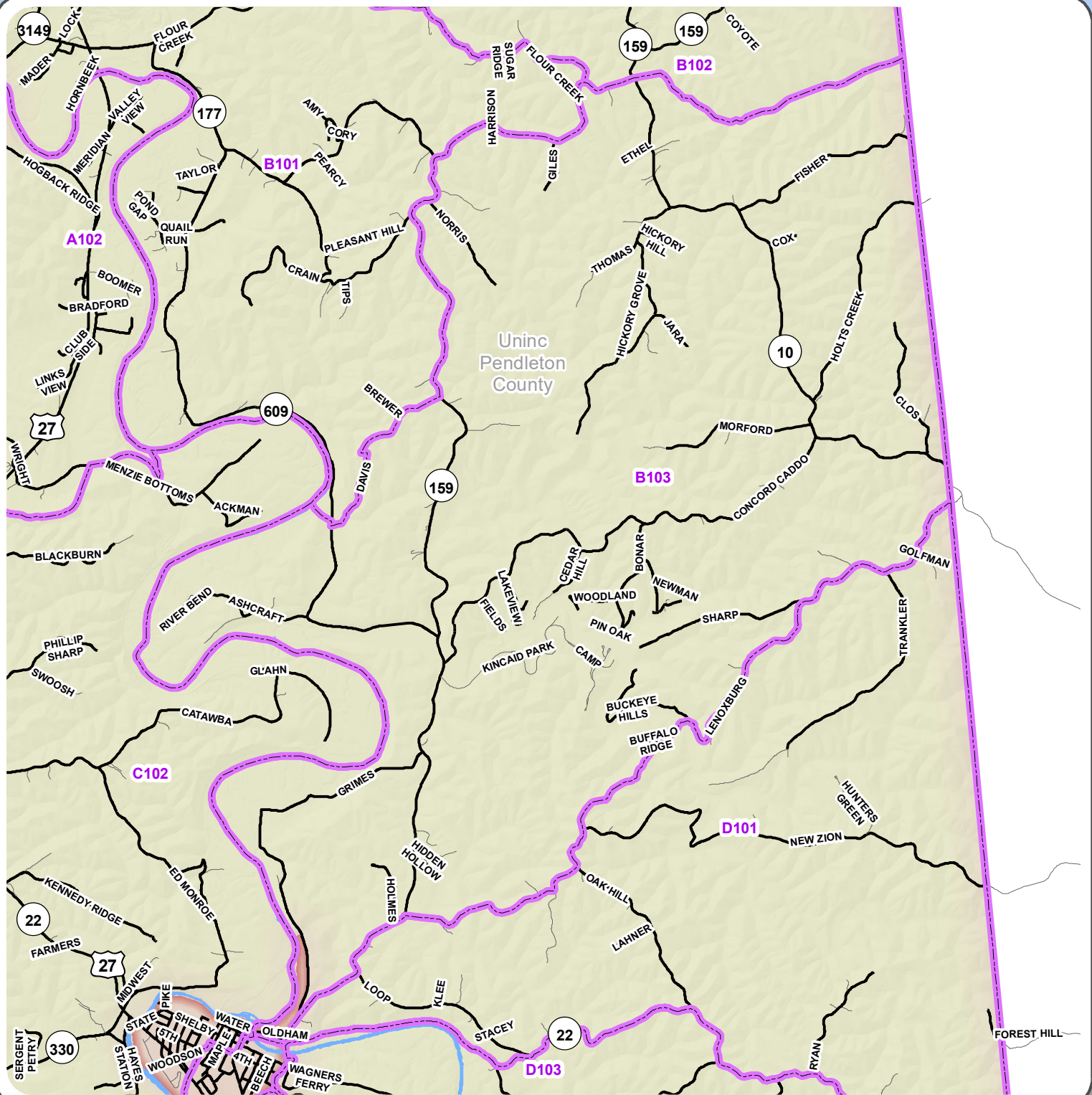
Prepared by LINK-GIS for the
Pendleton County Clerk's Office
859-392-1600

Date: 12/9/2021

These GIS data are deemed reliable and every effort has been made to ensure their accuracy. They are, however, provided "as is" without warranty of correctness, timeliness, reliability, or completeness. Map elements do not represent a legal survey of land. Use of these data for any purpose should be with an acknowledgement of their limitations, including the fact that they are dynamic in nature and in a constant state of maintenance. Field investigation may be necessary.



B103



Boundaries

Precinct

County

Butler

Falmouth

Uninc Pendleton County

Pendleton Centerlines

ROAD_CLASS

State Park Road; County and Local Roads

Primary Road; Highway

Pendleton County Precincts

1:70,000

0 2,000 4,000 Feet



2332 Royal Drive
Fort Mitchell, KY 41017
859.331.8980
Office hours M-F 8-5
www.linkgis.org

Prepared by LINK-GIS for the
Pendleton County Clerk's Office
859-392-1600

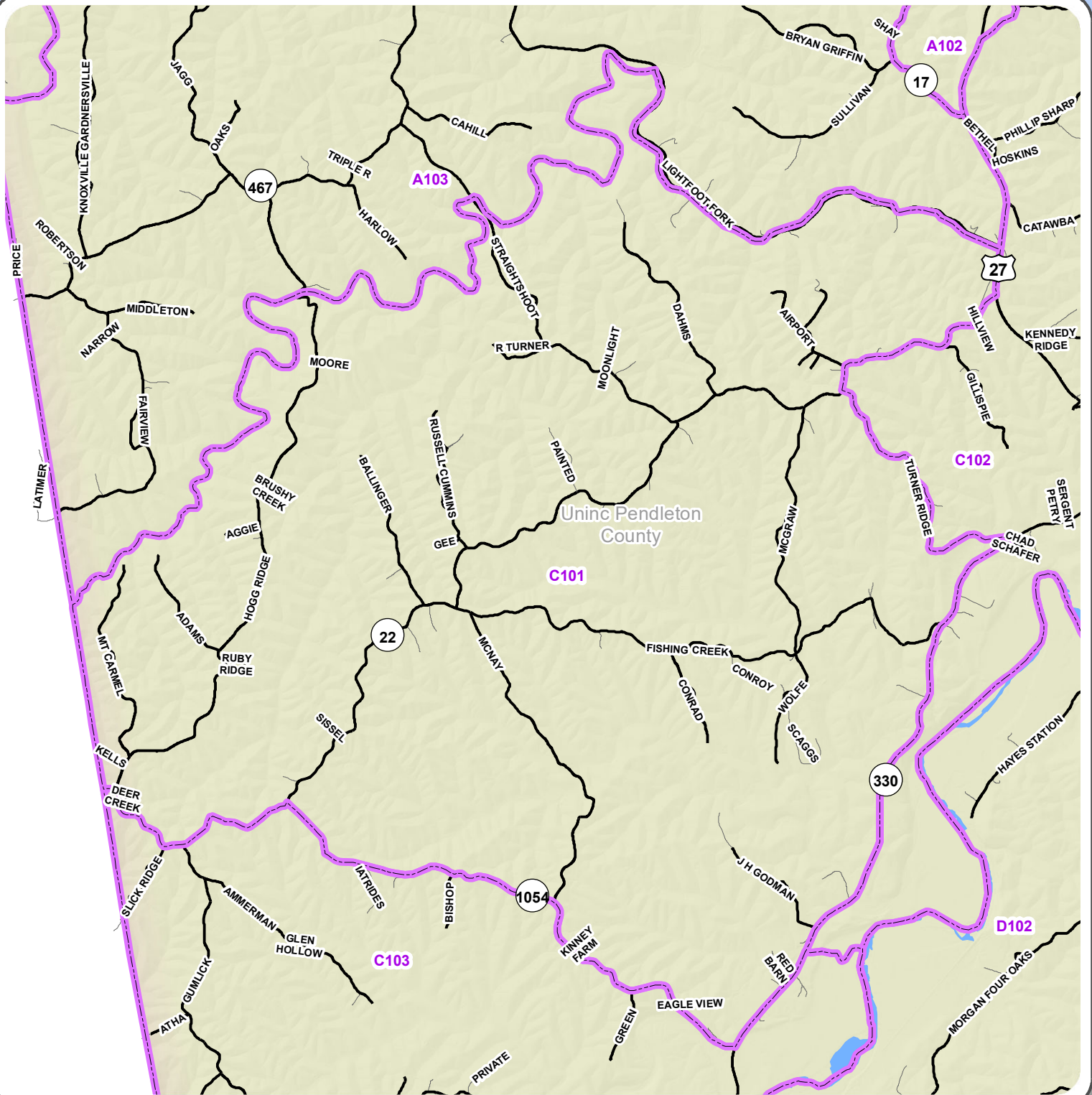
Date: 12/9/2021



These GIS data are deemed reliable and every effort has been made to ensure their accuracy. They are, however, provided "as is" without warranty of correctness, timeliness, reliability, or completeness. Map elements do not represent a legal survey of land. Use of these data for any purpose should be with an acknowledgement of their limitations, including the fact that they are dynamic in nature and in a constant state of maintenance. Field investigation may be necessary.



C101



Boundaries

Precinct

County

Butler

Falmouth

Uninc Pendleton County

Pendleton Centerlines

ROAD_CLASS

State Park Road; County and Local Roads

Primary Road; Highway

Pendleton County Precincts

1:69,000

0 2,000 4,000 Feet



2332 Royal Drive
Fort Mitchell, KY 41017
859.331.8980
Office hours M-F 8-5
www.linkgis.org

Prepared by LINK-GIS for the
Pendleton County Clerk's Office
859-392-1600

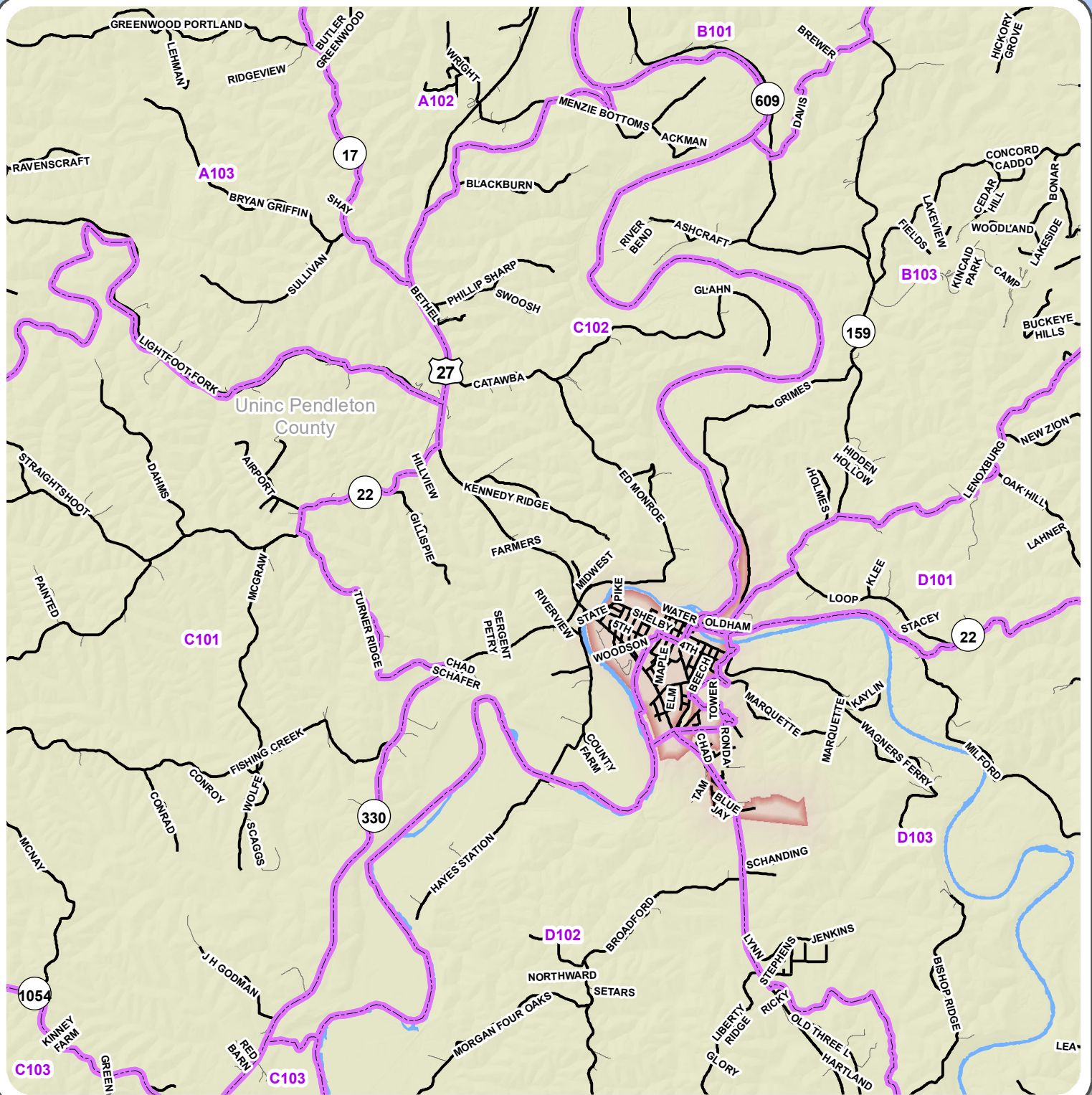
Date: 12/9/2021



These GIS data are deemed reliable and every effort has been made to ensure their accuracy. They are, however, provided "as is" without warranty of correctness, timeliness, reliability, or completeness. Map elements do not represent a legal survey of land. Use of these data for any purpose should be with an acknowledgement of their limitations, including the fact that they are dynamic in nature and in a constant state of maintenance. Field investigation may be necessary.



C102



Boundaries

Precinct

County

Butler

Falmouth

Uninc Pendleton County

Pendleton Centerlines

ROAD_CLASS

State Park Road; County and Local Roads

Primary Road; Highway

Pendleton County Precincts

1:76,000

0 2,000 4,000 Feet



2332 Royal Drive
Fort Mitchell, KY 41017
859.331.8980
Office hours M-F 8-5
www.linkgis.org

Prepared by LINK-GIS for the
Pendleton County Clerk's Office
859-392-1600

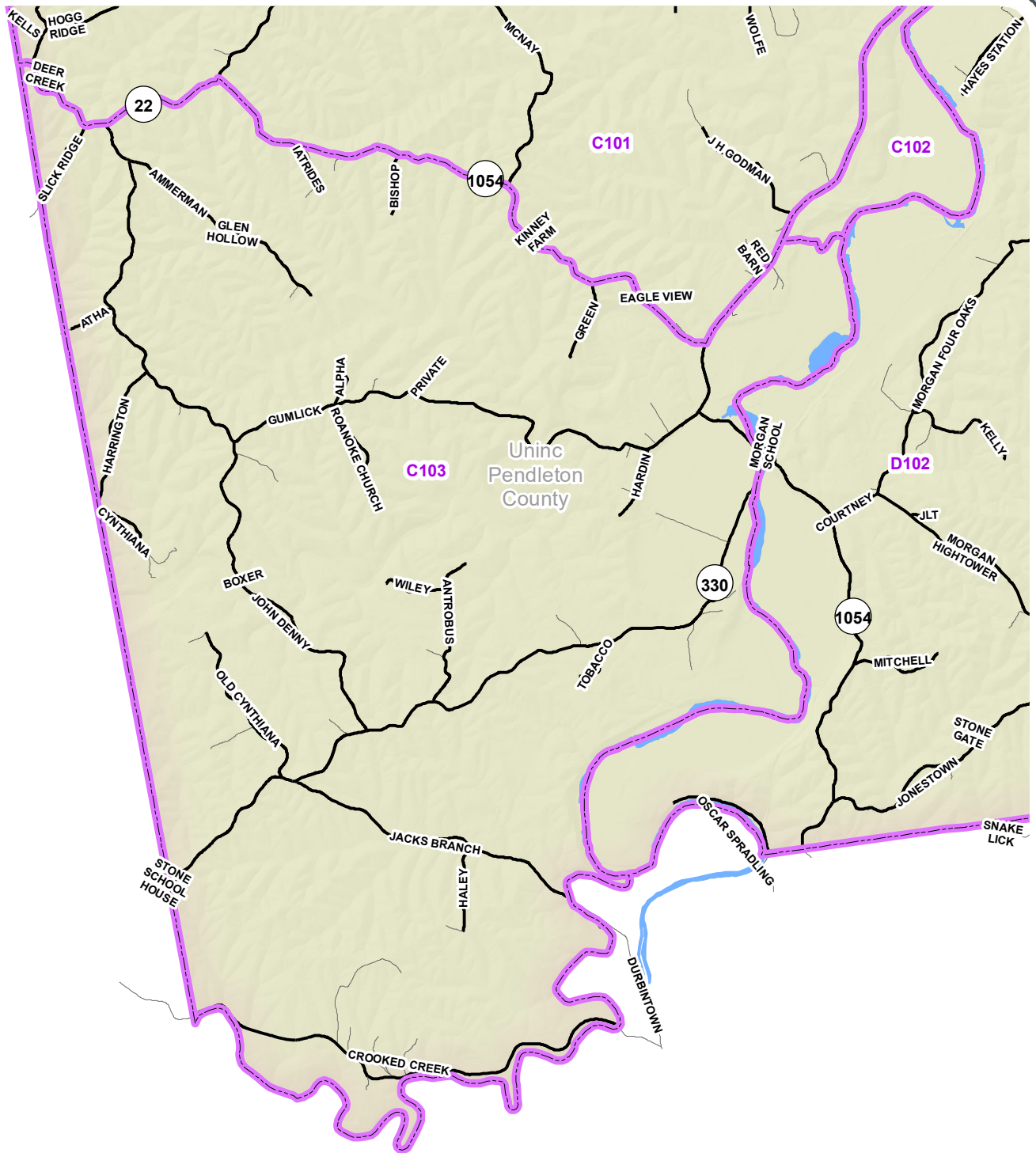
Date: 12/9/2021



These GIS data are deemed reliable and every effort has been made to ensure their accuracy. They are, however, provided "as is" without warranty of correctness, timeliness, reliability, or completeness. Map elements do not represent a legal survey of land. Use of these data for any purpose should be with an acknowledgement of their limitations, including the fact that they are dynamic in nature and in a constant state of maintenance. Field investigation may be necessary.



C103



Boundaries

Precinct

County

Butler

Falmouth

Uninc Pendleton County

Pendleton Centerlines

ROAD_CLASS

State Park Road; County and Local Roads

Primary Road; Highway

Pendleton County Precincts

1:70,000

0 2,000 4,000 Feet



2332 Royal Drive
Fort Mitchell, KY 41017
859.331.8980
Office hours M-F 8-5
www.linkgis.org

Prepared by LINK-GIS for the
Pendleton County Clerk's Office
859-392-1600

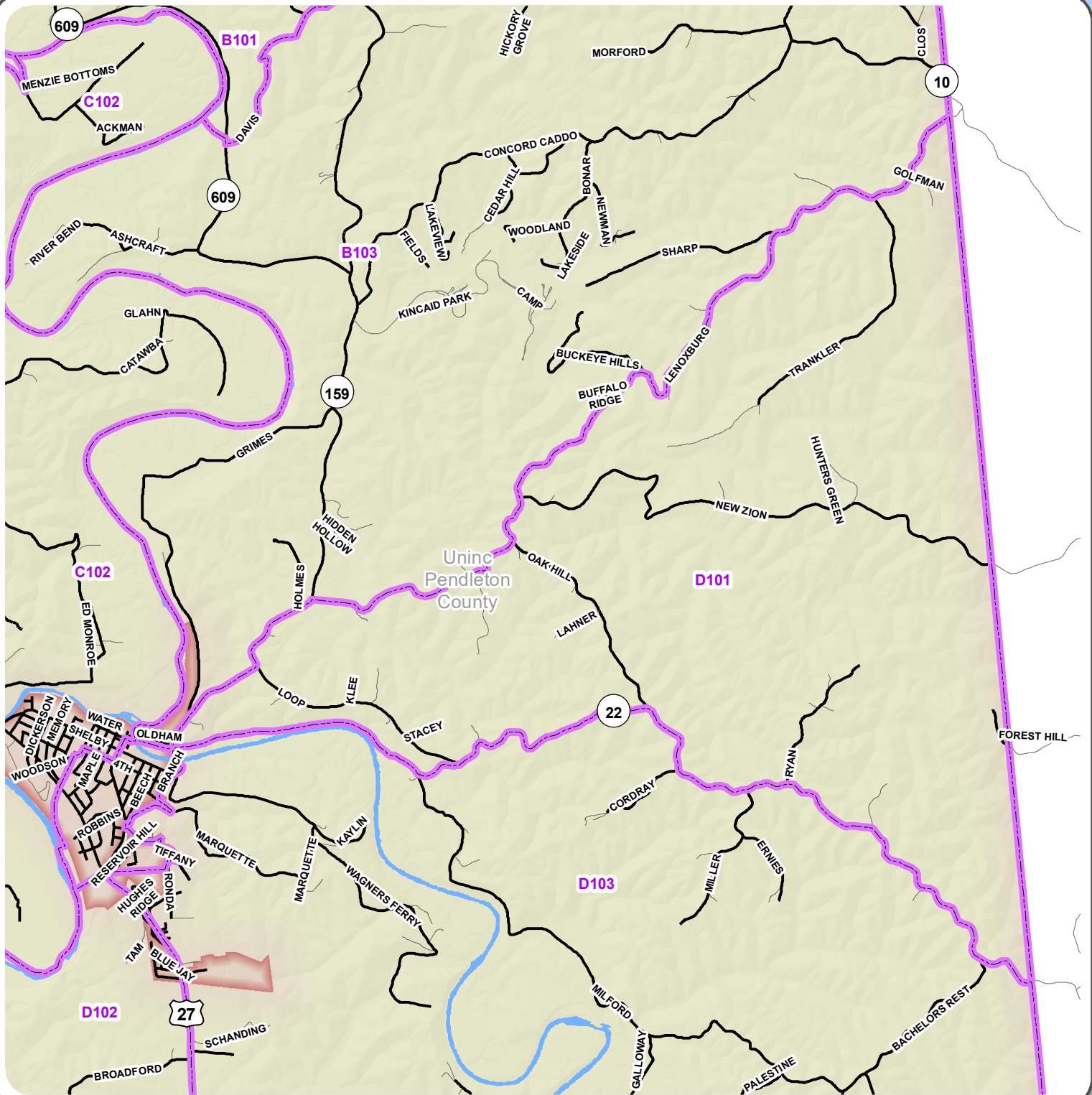
Date: 12/9/2021



These GIS data are deemed reliable and every effort has been made to ensure their accuracy. They are, however, provided "as is" without warranty of correctness, timeliness, reliability, or completeness. Map elements do not represent a legal survey of land. Use of these data for any purpose should be with an acknowledgement of their limitations, including the fact that they are dynamic in nature and in a constant state of maintenance. Field investigation may be necessary.



D101



Boundaries

Precinct

County

Butler

Falmouth

Uninc Pendleton County

Pendleton Centerlines

ROAD_CLASS

State Park Road; County and Local Roads

Primary Road; Highway

Pendleton County Precincts

1:60,000

0 2,000 4,000 Feet



2332 Royal Drive
Fort Mitchell, KY 41017
859.331.8980
Office hours M-F 8-5
www.linkgis.org

Prepared by LINK-GIS for the
Pendleton County Clerk's Office
859-392-1600

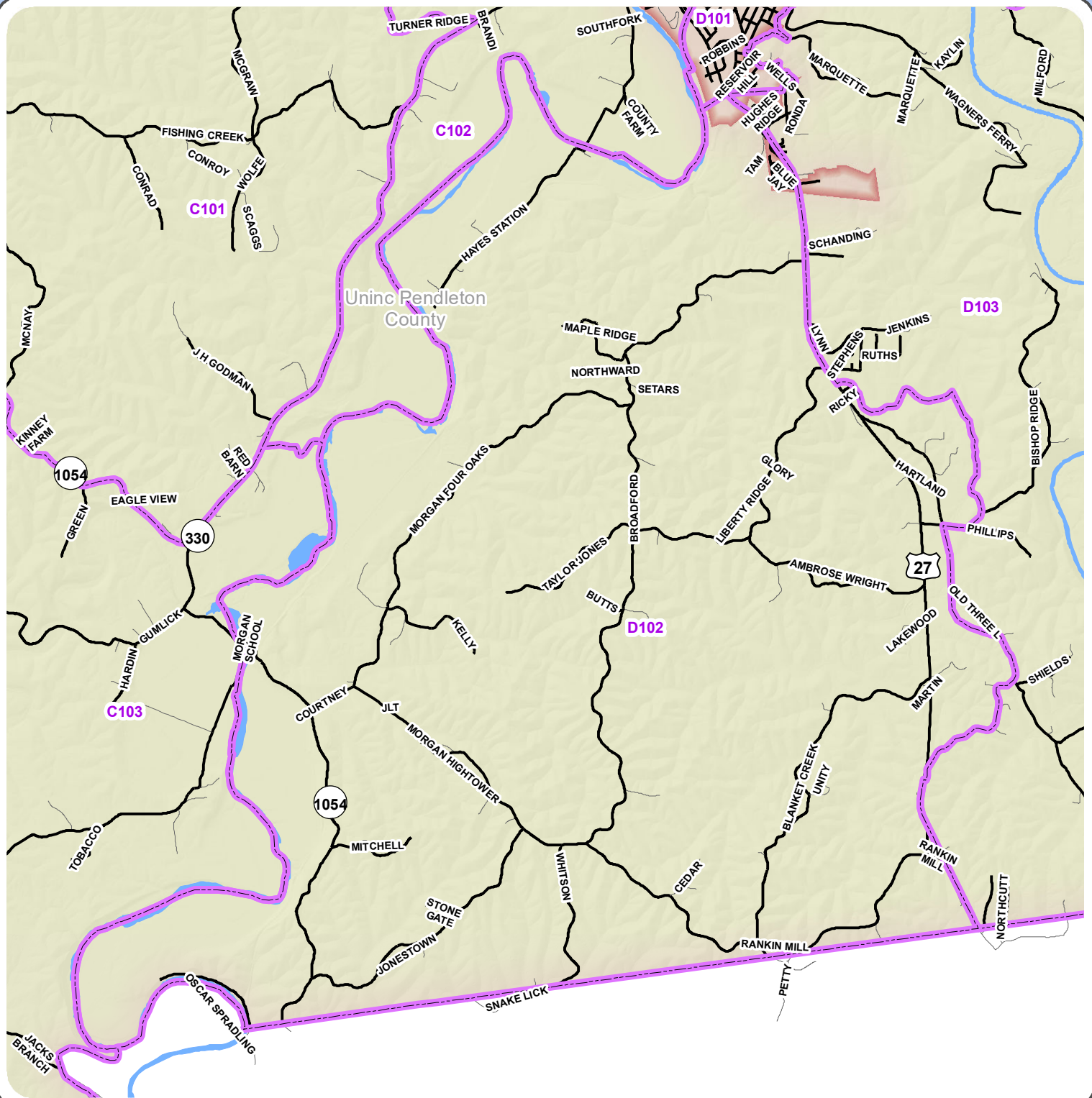
Date: 12/9/2021



These GIS data are deemed reliable and every effort has been made to ensure their accuracy. They are, however, provided "as is" without warranty of correctness, timeliness, reliability, or completeness. Map elements do not represent a legal survey of land. Use of these data for any purpose should be with an acknowledgement of their limitations, including the fact that they are dynamic in nature and in a constant state of maintenance. Field investigation may be necessary.



D102



Boundaries

Precinct

County

Butler

Falmouth

Uninc Pendleton County

Pendleton Centerlines

ROAD_CLASS

State Park Road; County and Local Roads

Primary Road; Highway

Pendleton County Precincts

1:67,000

0 2,000 4,000 Feet



2332 Royal Drive
Fort Mitchell, KY 41017
859.331.8980
Office hours M-F 8-5
www.linkgis.org

Prepared by LINK-GIS for the
Pendleton County Clerk's Office
859-392-1600

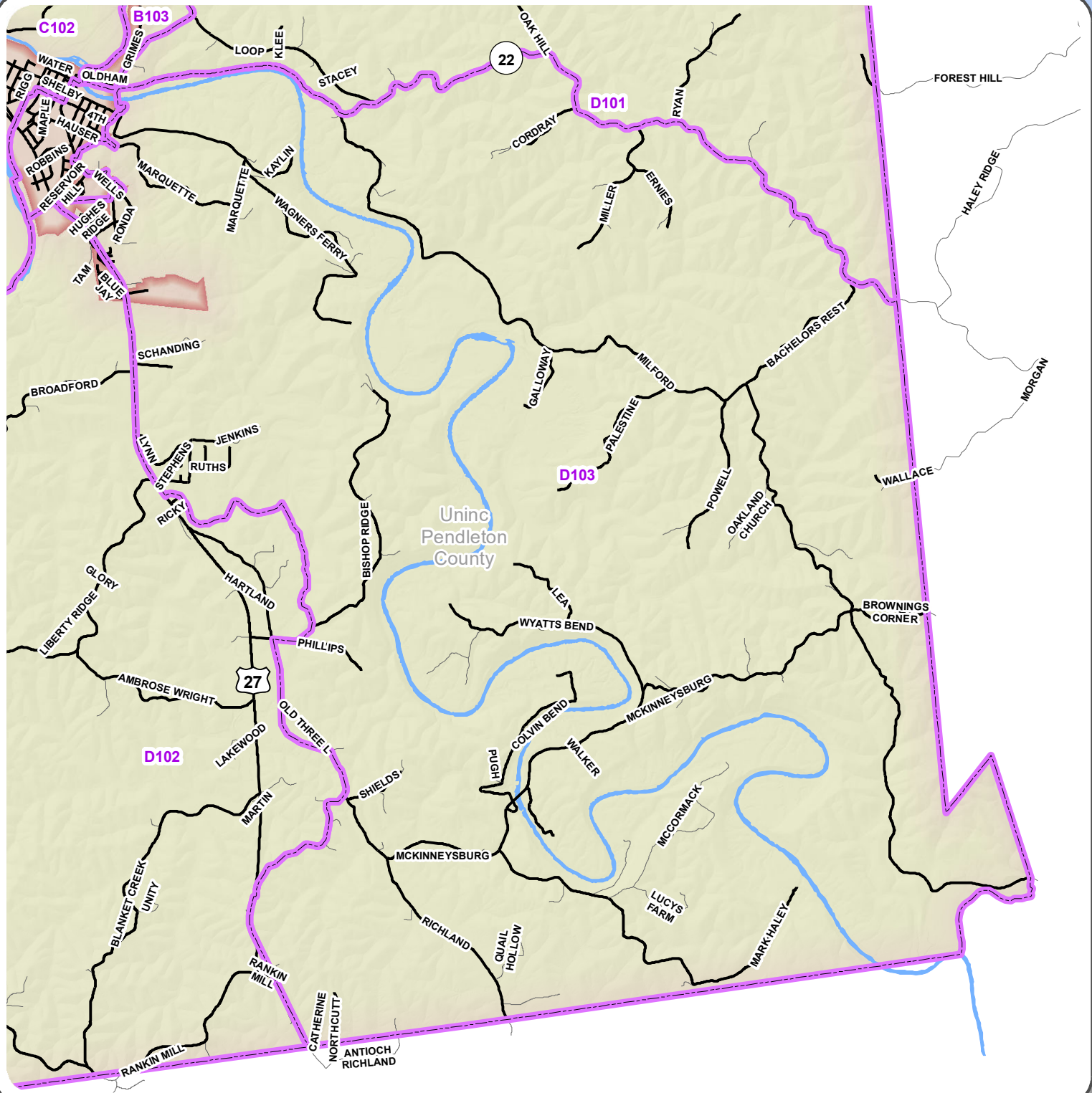
Date: 12/9/2021



These GIS data are deemed reliable and every effort has been made to ensure their accuracy. They are, however, provided "as is" without warranty of correctness, timeliness, reliability, or completeness. Map elements do not represent a legal survey of land. Use of these data for any purpose should be with an acknowledgement of their limitations, including the fact that they are dynamic in nature and in a constant state of maintenance. Field investigation may be necessary.



D103



Boundaries

Precinct

County

Butler

Falmouth

Uninc Pendleton County

Pendleton Centerlines

ROAD_CLASS

State Park Road; County and Local Roads

Primary Road; Highway

Pendleton County Precincts

1:66,000

0 2,000 4,000 Feet



2332 Royal Drive
Fort Mitchell, KY 41017
859.331.8980
Office hours M-F 8-5
www.linkgis.org

Prepared by LINK-GIS for the
Pendleton County Clerk's Office
859-392-1600

Date: 12/9/2021



These GIS data are deemed reliable and every effort has been made to ensure their accuracy. They are, however, provided "as is" without warranty of correctness, timeliness, reliability, or completeness. Map elements do not represent a legal survey of land. Use of these data for any purpose should be with an acknowledgement of their limitations, including the fact that they are dynamic in nature and in a constant state of maintenance. Field investigation may be necessary.